

For Research Use Only

Ribosomal protein L4 Polyclonal antibody

Catalog Number: 11302-1-AP

Featured Product

36 Publications



Basic Information

Catalog Number:

11302-1-AP

Size:

900 ug/ml

Source:

Rabbit

Isotype:

IgG

Immunogen Catalog Number:

AG1828

GenBank Accession Number:

BC009888

GeneID (NCBI):

6124

UNIPROT ID:

P36578

Full Name:

ribosomal protein L4

Calculated MW:

48 kDa

Observed MW:

48 kDa

Purification Method:

Antigen affinity purification

Recommended Dilutions:

WB 1:2000-1:10000

IP 0.5-4.0 ug for 1.0-3.0 mg of total protein lysate

IHC 1:50-1:500

IF/ICC 1:200-1:800

Applications

Tested Applications:

WB, IHC, IF/ICC, FC (Intra), IP, ELISA

Cited Applications:

WB, IF, IP, RIP

Species Specificity:

human, mouse, rat

Cited Species:

human, mouse, rice, arabidopsis

Note-IHC: suggested antigen retrieval with TE buffer pH 9.0; (*) Alternatively, antigen retrieval may be performed with citrate buffer pH 6.0

Positive Controls:

WB : HeLa cells, rat skeletal muscle tissue, HepG2 cells, MCF-7 cells

IP : HeLa cells,

IHC : human lymphoma tissue,

IF/ICC : HeLa cells,

Background Information

60S ribosomal protein L4 is encoded by RPL4 (or RPL1) gene. RPL4 is a component of 60S subunit of ribosome, and belongs to the L4E family. By interacting with c-Myb, RPL4 plays a important role in c-myc expression in response to growth factor and nutritional signals. Recently RPL4 was reported to be able to increase efficiency of viral recoding sequence.

Notable Publications

| Author | Pubmed ID | Journal | Application |
|---------------------|-----------|---------------|-------------|
| Bartoli Kristen MKM | 21795388 | Mol Biol Cell | WB |
| Zekun Wang | 34653226 | PLoS Pathog | WB |
| Annie Hien | 33054857 | Mol Autism | WB |

Storage

Storage:

Store at -20°C. Stable for one year after shipment.

Storage Buffer:

PBS with 0.02% sodium azide and 50% glycerol pH 7.3.

Aliquoting is unnecessary for -20°C storage

For technical support and original validation data for this product please contact:

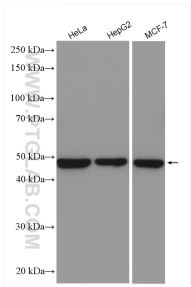
T: 4006900926

E: Proteintech-CN@ptglab.com

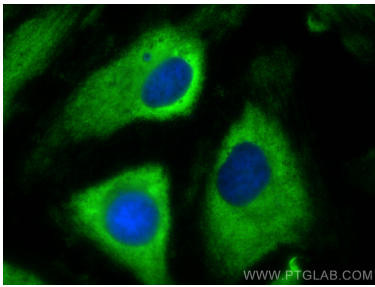
W: ptgcn.com

This product is exclusively available under Proteintech Group brand and is not available to purchase from any other manufacturer.

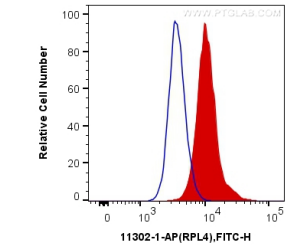
Selected Validation Data



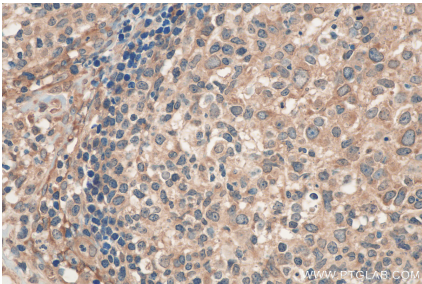
Various lysates were subjected to SDS PAGE followed by western blot with 11302-1-AP (Ribosomal protein L4 antibody) at dilution of 1:5000 incubated at room temperature for 1.5 hours.



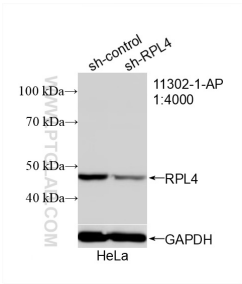
Immunofluorescent analysis of (-20°C Ethanol) fixed HeLa cells using Ribosomal protein L4 antibody (11302-1-AP) at dilution of 1:400 and Multi-rAb CoraLite® Plus 488-Goat Anti-Rabbit Recombinant Secondary Antibody (H+L) (RGAR002).



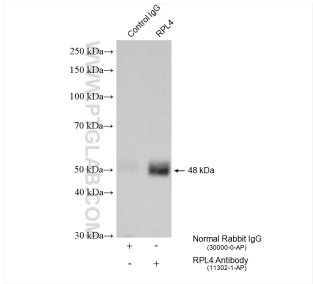
1X10⁶ HeLa cells were intracellularly stained with 0.2 ug Anti-Human Ribosomal protein L4 (11302-1-AP) and CoraLite®488-Conjugated AffiniPure Goat Anti-Rabbit IgG(H+L) at dilution 1:1000 (red), or 0.2 ug Control Antibody. Cells were fixed with 4% PFA and permeabilized with Flow Cytometry Perm Buffer (PF00011-C).



Immunohistochemical analysis of paraffin-embedded human lymphoma tissue slide using 11302-1-AP (Ribosomal protein L4 antibody) at dilution of 1:200 (under 40x lens). Heat mediated antigen retrieval with Tris-EDTA buffer (pH 9.0).



WB result of Ribosomal protein L4 antibody (11302-1-AP; 1:4000; incubated at room temperature for 1.5 hours) with sh-Control and sh-Ribosomal protein L4 transfected HeLa cells.



IP result of anti-Ribosomal protein L4 (IP:11302-1-AP, 4ug; Detection:11302-1-AP 1:6000) with HeLa cells lysate 1050 ug.