

P2RY6 Polyclonal antibody

Catalog Number: 11300-1-AP

2 Publications

Basic Information

Catalog Number:

11300-1-AP

Size:

133 µg/ml

Source:

Rabbit

Isotype:

IgG

Immunogen Catalog Number:

AG1820

GenBank Accession Number:

BC009391

GeneID (NCBI):

5031

UNIPROT ID:

Q15077

Full Name:

pyrimidinergic receptor P2Y, G-protein coupled, 6

Calculated MW:

36 kDa

Observed MW:

45 kDa

Purification Method:

Antigen affinity purification

Recommended Dilutions:

WB 1:500-1:2000

Applications

Tested Applications:

WB, ELISA

Cited Applications:

WB

Species Specificity:

human, mouse, rat

Cited Species:

human

Positive Controls:

WB : A549 cells,

Background Information

Nucleotides, the structural subunits of the nucleic acids, are also important extracellular signaling molecules. P2 receptors are a family of cell surface receptors that mediate a wide variety of physiologic effects in response to extracellular nucleotides. These receptors fall into two classes: P2X receptors, which are ligand-gated ion channels that mediate calcium and potassium fluxes in response to ATP, and P2Y receptors, which are G protein-coupled receptors (GPCRs). P2RY6 is responsive to UDP, partially responsive to UTP and ADP, and not responsive to ATP. The activity of this receptor is mediated by G proteins which activate a phosphatidylinositol-calcium second messenger system. (PMID: 8670200; 21724990)

Notable Publications

Author	Pubmed ID	Journal	Application
Erina Takai	21388279	Radiat Res	WB
Takai Erina E	21189077	Radiat Res	WB

Storage

Storage:

Store at -20°C. Stable for one year after shipment.

Storage Buffer:

PBS with 0.02% sodium azide and 50% glycerol pH 7.3.

Aliquoting is unnecessary for -20°C storage

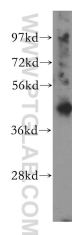
For technical support and original validation data for this product please contact:

T: 4006900926

E: Proteintech-CN@ptglab.comW: ptgcn.com

This product is exclusively available under Proteintech Group brand and is not available to purchase from any other manufacturer.

Selected Validation Data



A549 cells were subjected to SDS PAGE followed by western blot with 11300-1-AP (P2RY6 antibody) at dilution of 1:300 incubated at room temperature for 1.5 hours.