

For Research Use Only

RPLPO Polyclonal antibody

Catalog Number: 11290-2-AP

24 Publications



Basic Information

Catalog Number:

11290-2-AP

Concentration:

400 µg/ml

Source:

Rabbit

Isotype:

IgG

Immunogen Catalog Number:

AG1829

GenBank Accession Number:

BC009867

GeneID (NCBI):

6175

UNIPROT ID:

P05388

Full Name:

ribosomal protein, large, PO

Calculated MW:

34 kDa

Observed MW:

34 kDa

Purification Method:

Antigen affinity purification

Recommended Dilutions:

WB 1:500-1:3000

IP 0.5-4.0 µg for 1.0-3.0 mg of total protein lysate

IHC 1:20-1:200

IF/ICC 1:50-1:500

Applications

Tested Applications:

WB, IHC, IF/ICC, IP, ELISA

Cited Applications:

WB, IHC, IF, RIP, ELISA

Species Specificity:

human, mouse, rat

Cited Species:

human, mouse, rat

Note-IHC: suggested antigen retrieval with TE buffer pH 9.0; (*) Alternatively, antigen retrieval may be performed with citrate buffer pH 6.0

Positive Controls:

WB : C6 cells,

IP : HeLa cells,

IHC : human colon cancer tissue,

IF/ICC : HeLa cells,

Background Information

RPLPO is first identified as a cytosolic protein which takes a part in the ribosomal stalk and interacts with RPLP1 and RPLP2. It also has potential roles in molecular transport from outside into the cells. It generally presents in multiple copies on the ribosome and have isoelectric points in the range of pH 3 to 5, in contrast to most ribosomal proteins, which are single copy and basic

Notable Publications

| Author | Pubmed ID | Journal | Application |
|--------------------|-----------|-----------------|-------------|
| Marie-Claude Perry | 25246633 | Mol Cell Biol | WB |
| Yanping Zhu | 32945042 | Cancer Sci | WB |
| Ming Tong | 26373814 | Alcohol Alcohol | ELISA |

Storage

Storage:

Store at -20°C. Stable for one year after shipment.

Storage Buffer:

PBS with 0.02% sodium azide and 50% glycerol pH 7.3.

Aliquoting is unnecessary for -20°C storage

For technical support and original validation data for this product please contact:

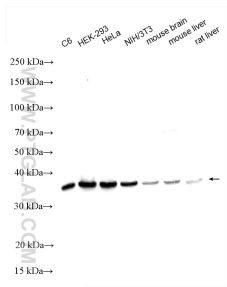
T: 4006900926

E: Proteintech-CN@ptglab.com

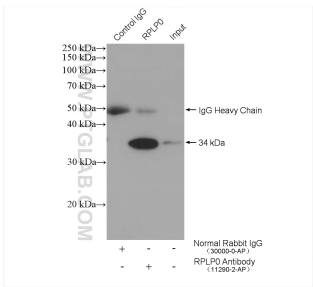
W: ptgcn.com

This product is exclusively available under Proteintech Group brand and is not available to purchase from any other manufacturer.

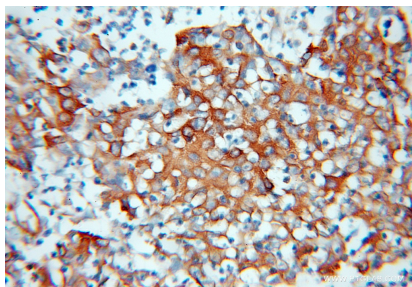
Selected Validation Data



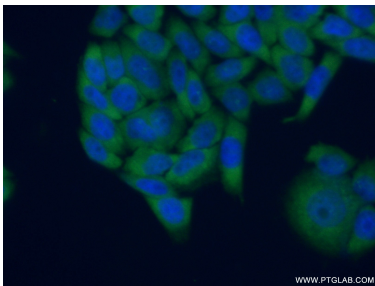
Various lysates were subjected to SDS PAGE followed by western blot with 11290-2-AP (RPLPO antibody) at dilution of 1:1500 incubated at room temperature for 1.5 hours.



IP result of anti-RPLPO (IP:11290-2-AP, 4ug; Detection:11290-2-AP 1:500) with HeLa cells lysate 2680 ug.



Immunohistochemical analysis of paraffin-embedded human colon cancer using 11290-2-AP (RPLPO antibody) at dilution of 1:100 (under 10x lens).



Immunofluorescent analysis of (10% Formaldehyde) fixed HeLa cells using 11290-2-AP (RPLPO antibody) at dilution of 1:50 and Alexa Fluor 488-conjugated Goat Anti-Rabbit IgG(H+L).