

For Research Use Only

TLE1 Polyclonal antibody

Catalog Number: 11284-1-AP **1 Publications**



Basic Information

Catalog Number: 11284-1-AP	GenBank Accession Number: BC010100	Purification Method: Antigen affinity purification
Size: 133 µg/ml	GeneID (NCBI): 7088	Recommended Dilutions: IHC 1:50-1:500
Source: Rabbit	UNIPROT ID: Q04724	
Isotype: IgG	Full Name: transducin-like enhancer of split 1 (E(sp1) homolog, Drosophila)	
Immunogen Catalog Number: AG1801	Calculated MW: 83 kDa	

Applications

Tested Applications: IHC, ELISA	Positive Controls: IHC : human gliomas tissue,
Cited Applications: WB, IF	
Species Specificity: human, mouse, rat	
Cited Species: human	

Note-IHC: suggested antigen retrieval with TE buffer pH 9.0; (*) Alternatively, antigen retrieval may be performed with citrate buffer pH 6.0

Background Information

Transducin-like enhancer protein 1(TLE1) is a transcriptional corepressor. It can bind to and regress expression of many transcription factors such as NFκB, which is mediated by FOXA2, CTNNB1 and TCF family member in Wnt signaling. The effects of full-length TLE family members may be modulated by association with dominant-negative AES. Expression of TLE1 is highest in skeletal muscle and liver, moderate in placenta, heart, kidney, and spleen, and weak in all other tissues including brain.

Notable Publications

Author	Pubmed ID	Journal	Application
Zhang Lisheng L	23175432	Hepatology	WB,IF

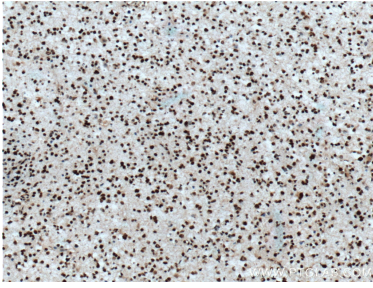
Storage

Storage:
Store at -20°C. Stable for one year after shipment.
Storage Buffer:
PBS with 0.02% sodium azide and 50% glycerol pH 7.3.
Aliquoting is unnecessary for -20°C storage

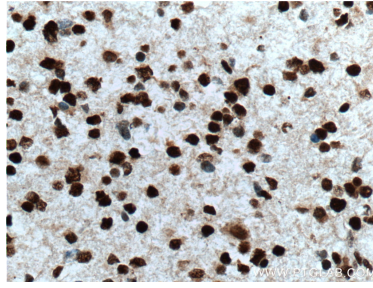
For technical support and original validation data for this product please contact:
T: 4006900926 E: Proteintech-CN@ptglab.com W: ptgcn.com

This product is exclusively available under Proteintech Group brand and is not available to purchase from any other manufacturer.

Selected Validation Data



Immunohistochemical analysis of paraffin-embedded human gliomas tissue slide using 11284-1-AP (TLE1 Antibody) at dilution of 1:200 (under 10x lens). Heat mediated antigen retrieval with Tris-EDTA buffer (pH 9.0).



Immunohistochemical analysis of paraffin-embedded human gliomas tissue slide using 11284-1-AP (TLE1 Antibody) at dilution of 1:200 (under 40x lens). Heat mediated antigen retrieval with Tris-EDTA buffer (pH 9.0).