

For Research Use Only

CREB3 Polyclonal antibody

Catalog Number: 11275-1-AP

Featured Product

19 Publications



Basic Information

Catalog Number:

11275-1-AP

Concentration:

450 µg/ml

Source:

Rabbit

Isotype:

IgG

Immunogen Catalog Number:

AG1823

GenBank Accession Number:

BC009402

GeneID (NCBI):

10488

UNIPROT ID:

O43889

Full Name:

cAMP responsive element binding protein 3

Calculated MW:

44 kDa

Observed MW:

40-64 kDa

Purification Method:

Antigen affinity purification

Recommended Dilutions:

WB 1:500-1:1000

IF/ICC 1:200-1:800

Applications

Tested Applications:

WB, IF/ICC, ELISA

Cited Applications:

WB, IHC, IF, IP, ChIP

Species Specificity:

human

Cited Species:

human, mouse, rat

Positive Controls:

WB: Jurkat cells, HeLa cells

IF/ICC: U2OS cells,

Background Information

CREB3, also named as LZIP and Luman, belongs to the bZIP family and ATF subfamily. It is a transcription factor activated upon intramembrane proteolysis (RIP), binds the cAMP response element (CRE) (consensus: 5'-GTGACGT[AG][AG]-3'), a sequence present in many viral and cellular promoters. CREB3 binds to and requires HCFC1 as a coactivator. The activity and expression are suppressed when the HCFC1-CREB3 complex binds with CREBZF. Participates in LKN-1/CCL15-induced chemotaxis signaling. CREB3 is N-glycosylated and released by proteolysis. So the MW of CREB3 is 40kd to 64kd (PMID: 12138176).

Notable Publications

Author	Pubmed ID	Journal	Application
Jenna Penney	30337854	Front Mol Neurosci	WB,IF,IP,ChIP
Ryoichi Murase	36152228	Mol Biol Rep	WB
Suhyun Kim	36057892	Cell Mol Life Sci	WB,IHC

Storage

Storage:

Store at -20°C. Stable for one year after shipment.

Storage Buffer:

PBS with 0.02% sodium azide and 50% glycerol, pH7.3

Aliquoting is unnecessary for -20°C storage

For technical support and original validation data for this product please contact:

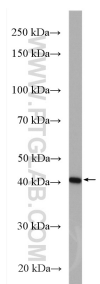
T: 4006900926

E: Proteintech-CN@ptglab.com

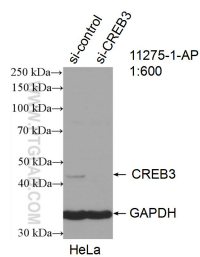
W: ptgcn.com

This product is exclusively available under Proteintech Group brand and is not available to purchase from any other manufacturer.

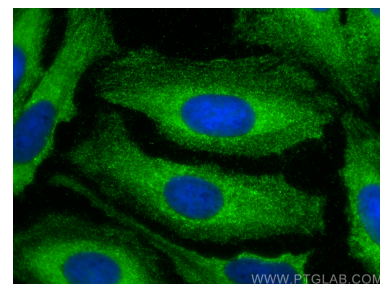
Selected Validation Data



Jurkat cells were subjected to SDS PAGE followed by western blot with 11275-1-AP (CREB3 antibody) at dilution of 1:600 incubated at room temperature for 1.5 hours.



WB result of CREB3 antibody (11275-1-AP; 1:600; incubated at room temperature for 1.5 hours) with sh-Control and sh-CREB3 transfected HeLa cells.



Immunofluorescent analysis of (4% PFA) fixed U2OS cells using CREB3 antibody (11275-1-AP) at dilution of 1:400 and CoraLite®488-Conjugated Goat Anti-Rabbit IgG(H+L).