

## RPL13 Polyclonal antibody

Catalog Number: 11271-1-AP

4 Publications

## Basic Information

## Catalog Number:

11271-1-AP

## Size:

400 µg/ml

## Source:

Rabbit

## Isotype:

IgG

## Immunogen Catalog Number:

AG1814

## GenBank Accession Number:

BC014167

## GeneID (NCBI):

6137

## UNIPROT ID:

P26373

## Full Name:

ribosomal protein L13

## Calculated MW:

24 kDa

## Observed MW:

24 kDa

## Purification Method:

Antigen affinity purification

## Recommended Dilutions:

WB 1:500-1:1000

IP 0.5-4.0 µg for 1.0-3.0 mg of total protein lysate

IHC 1:20-1:200

## Applications

## Tested Applications:

IHC, IP, WB, ELISA

## Cited Applications:

WB, IF

## Species Specificity:

human, mouse, rat

## Cited Species:

human, mouse

**Note-IHC:** suggested antigen retrieval with **TE buffer pH 9.0; (\*) Alternatively, antigen retrieval may be performed with citrate buffer pH 6.0**

## Positive Controls:

WB : HeLa cells, SGC-7901 cells, human lung tissue

IP : HeLa cells,

IHC : human colon cancer tissue,

## Background Information

The mammalian ribosome comprises 79 ribosomal proteins and four rRNAs, which combine in equimolar ratios to form the small (40S) and large (60S) subunits. Ribosome proteins are a direct and critical target of the PI3K pathway in promoting growth.[PMID:15289434]. RPL13 may be a plausible candidate tumor suppressor gene, as knocking down L13 expression using small interfering RNA (siRNA) resulted in drastic attenuation of cancer cell growth with significant G1 and G2/M arrest of the cell cycle[PMID:16786168].

## Notable Publications

Author	Pubmed ID	Journal	Application
Kai Ma	35637200	Cell Discov	WB
Sipeng Li	34265469	Mol Cell Proteomics	WB
Xiaochen Gai	34980897	Cell Res	IF

## Storage

## Storage:

Store at -20°C. Stable for one year after shipment.

## Storage Buffer:

PBS with 0.02% sodium azide and 50% glycerol pH 7.3.

Aliquoting is unnecessary for -20°C storage

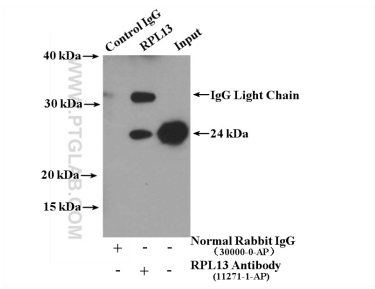
For technical support and original validation data for this product please contact:

T: 4006900926

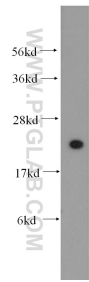
E: [Proteintech-CN@ptglab.com](mailto:Proteintech-CN@ptglab.com)W: [ptgcn.com](http://ptgcn.com)

This product is exclusively available under Proteintech Group brand and is not available to purchase from any other manufacturer.

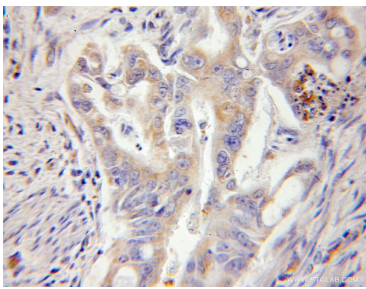
Selected Validation Data



IP result of anti-RPL13 (IP:11271-1-AP, 4ug; Detection:11271-1-AP 1:300) with HeLa cells lysate 3000 ug.



HeLa cells were subjected to SDS PAGE followed by western blot with 11271-1-AP (RPL13 antibody) at dilution of 1:500 incubated at room temperature for 1.5 hours.



Immunohistochemical analysis of paraffin-embedded human colon cancer using 11271-1-AP (RPL13 antibody) at dilution of 1:50 (under 10x lens).