

For Research Use Only

ATG12 Polyclonal antibody

Catalog Number: 11264-1-AP

Featured Product

11 Publications



Basic Information

Catalog Number:

11264-1-AP

Concentration:

800 ug/ml

Source:

Rabbit

Isotype:

IgG

Immunogen Catalog Number:

AG1791

GenBank Accession Number:

BC012266

GeneID (NCBI):

9140

UNIPROT ID:

O94817

Full Name:

ATG12 autophagy related 12 homolog
(S. cerevisiae)

Calculated MW:

15 kDa

Observed MW:

48-55 kDa

Purification Method:

Antigen affinity purification

Recommended Dilutions:

WB 1:500-1:1000

IHC 1:50-1:500

IF/ICC 1:200-1:800

Applications

Tested Applications:

WB, IHC, IF/ICC, ELISA

Cited Applications:

WB, IHC, IF

Species Specificity:

human, mouse

Cited Species:

human, mouse, rat

**Note-IHC: suggested antigen retrieval with
TE buffer pH 9.0; (*) Alternatively, antigen
retrieval may be performed with citrate
buffer pH 6.0**

Positive Controls:

WB : PC-3 cells, COLO 320 cells, NIH/3T3 cells, HeLa
cells, HCT 116 cells

IHC : human colon cancer tissue,

IF/ICC : PC-3 cells,

Background Information

ATG12, also named as APG12 and APG12L, belongs to the ATG12 family. It is required for autophagy. Free ATG12 is 15kd or 8kd. Conjugated to ATG5, ATG12-ATG5 show 48-55kd.

Notable Publications

Author	Pubmed ID	Journal	Application
Huangrong Zhu	36120586	Front Cell Dev Biol	WB,IF
Xinxin Si	36382664	Pharmacology	IHC
Jian-He Lu	34070854	Biology (Basel)	WB

Storage

Storage:

Store at -20°C. Stable for one year after shipment.

Storage Buffer:

PBS with 0.02% sodium azide and 50% glycerol pH 7.3.

Aliquoting is unnecessary for -20°C storage

For technical support and original validation data for this product please contact:

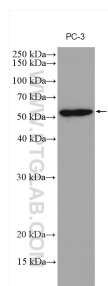
T: 4006900926

E: Proteintech-CN@ptglab.com

W: ptgcn.com

This product is exclusively available under Proteintech Group brand and is not available to purchase from any other manufacturer.

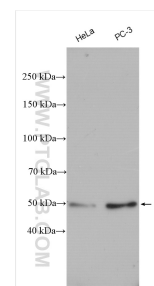
Selected Validation Data



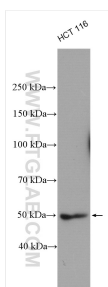
PC-3 cells were subjected to SDS PAGE followed by western blot with 11264-1-AP (ATG12 antibody) at dilution of 1:800 incubated at room temperature for 1.5 hours.



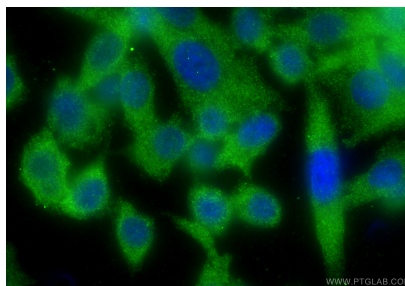
Immunohistochemical analysis of paraffin-embedded human colon cancer tissue slide using 11264-1-AP (ATG12 antibody) at dilution of 1:200 (under 10x lens). Heat mediated antigen retrieval with Tris-EDTA buffer (pH 9.0).



Various lysates were subjected to SDS PAGE followed by western blot with 11264-1-AP (ATG12 antibody) at dilution of 1:3000 incubated at room temperature for 1.5 hours.



HCT 116 cells were subjected to SDS PAGE followed by western blot with 11264-1-AP (ATG12 antibody) at dilution of 1:3000 incubated at room temperature for 1.5 hours.



Immunofluorescent analysis of (-20°C Ethanol) fixed PC-3 cells using ATG12 antibody (11264-1-AP) at dilution of 1:400 and CoraLite®488-Conjugated Goat Anti-Rabbit IgG(H+L) (SA00013-2).