

For Research Use Only

ATG3 Polyclonal antibody

Catalog Number: 11262-2-AP

27 Publications



Basic Information

Catalog Number:

11262-2-AP

Source:

Rabbit

Isotype:

IgG

Immunogen Catalog Number:

AG1785

GenBank Accession Number:

BC024221

GeneID (NCBI):

64422

UNIPROT ID:

Q9NT62

Full Name:

ATG3 autophagy related 3 homolog
(S. cerevisiae)

Calculated MW:

36 kDa

Observed MW:

36-40 kDa

Purification Method:

Antigen affinity purification

Recommended Dilutions:

WB: 1:2000-1:12000

IHC: 1:500-1:2000

IF/ICC: 1:200-1:800

Applications

Tested Applications:

WB, IHC, IF/ICC, ELISA

Cited Applications:

WB, IHC, IF

Species Specificity:

human, mouse, rat

Cited Species:

human, mouse, rat, pig

**Note-IHC: suggested antigen retrieval with
TE buffer pH 9.0; (*) Alternatively, antigen
retrieval may be performed with citrate
buffer pH 6.0**

Positive Controls:

WB: HL-60 cells, HeLa cells, Jurkat cells, K-562 cells,
THP-1 cells, PC-12 cells

IHC: mouse kidney tissue,

IF/ICC: HEK-293 cells,

Background Information

Autophagy is a lysosome-dependent conserved catabolic process in response to various stresses, such as oxidative stress and ischemia, for the degradation and recycling of aged or dysfunctional intracellular components and damaged organelles. A large group of autophagy-related genes (ATGs) have been identified as essential drivers in different stages of autophagy. Autophagy-related 3 (ATG3), one of the autophagy-related gene family members, serves as an E2-like enzyme contributing to the conjugation of microtubule-associated protein light chain 3 (LC3) to lipid phosphatidylethanolamine (PE). ATG3 plays a significant role in the regulation of autophagy, viability, and death.

Notable Publications

Author	Pubmed ID	Journal	Application
Na Yang	34546510	Stem Cell Rev Rep	WB
Hou Chaoqun	36183442	Tissue Cell	IF
Yeyi Xiao	36270035	Ecotoxicol Environ Saf	WB

Storage

Storage:

Store at -20°C. Stable for one year after shipment.

Storage Buffer:

PBS with 0.02% sodium azide and 50% glycerol, pH7.3

Aliquoting is unnecessary for -20°C storage

For technical support and original validation data for this product please contact:

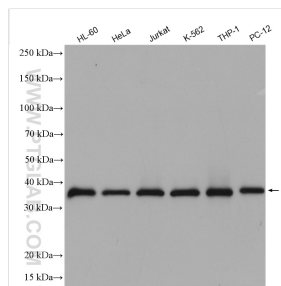
T: 4006900926

E: Proteintech-CN@ptglab.com

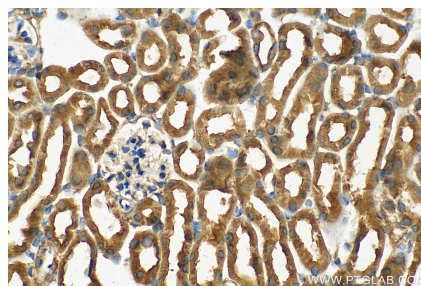
W: ptgcn.com

This product is exclusively available under Proteintech Group brand and is not available to purchase from any other manufacturer.

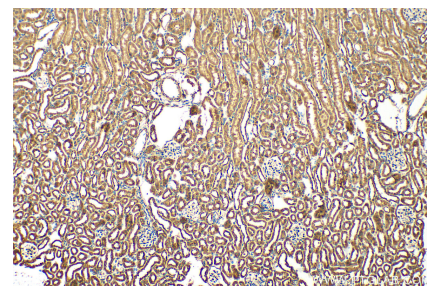
Selected Validation Data



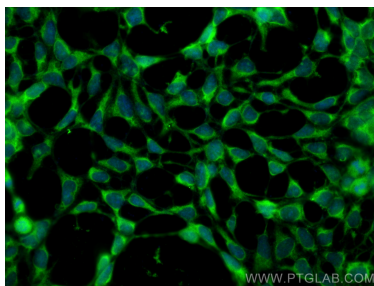
Various lysates were subjected to SDS PAGE followed by western blot with 11262-2-AP (ATG3 antibody) at dilution of 1:6000 incubated at room temperature for 1.5 hours.



Immunohistochemical analysis of paraffin-embedded mouse kidney tissue slide using 11262-2-AP (ATG3 antibody) at dilution of 1:1000 (under 40x lens). Heat mediated antigen retrieval with Tris-EDTA buffer (pH 9.0).



Immunohistochemical analysis of paraffin-embedded mouse kidney tissue slide using 11262-2-AP (ATG3 antibody) at dilution of 1:1000 (under 10x lens). Heat mediated antigen retrieval with Tris-EDTA buffer (pH 9.0).



Immunofluorescent analysis of (-20°C Ethanol) fixed HEK-293 cells using ATG3 antibody (11262-2-AP) at dilution of 1:400 and CoraLite®488-Conjugated AffiniPure Goat Anti-Rabbit IgG(H+L).