

For Research Use Only

ERK1/2 Polyclonal antibody

Catalog Number: 11257-1-AP

Featured Product

510 Publications



Basic Information

Catalog Number:

11257-1-AP

Source:

Rabbit

Isotype:

IgG

Immunogen Catalog Number:

AG1759

GenBank Accession Number:

BC013992

GeneID (NCBI):

5595

UNIPROT ID:

P27361

Full Name:

mitogen-activated protein kinase 3

Calculated MW:

43 kDa

Observed MW:

38-44 kDa

Purification Method:

Antigen affinity purification

Recommended Dilutions:

WB: 1:2000-1:6000

IP: 0.5-4.0 ug for 1.0-3.0 mg of total protein lysate

IHC: 1:100-1:400

IF/ICC: 1:200-1:800

FC (Intra): 0.40 ug per 10⁶ cells in a 100 µl suspension

Applications

Tested Applications:

WB, IHC, IF/ICC, FC (Intra), IP, ELISA

Cited Applications:

WB, IHC, IF, CoIP

Species Specificity:

human, mouse, rat

Cited Species:

human, mouse, rat, pig, canine, chicken, zebrafish, bovine, sheep, goat

Note-IHC: suggested antigen retrieval with TE buffer pH 9.0; (*) Alternatively, antigen retrieval may be performed with citrate buffer pH 6.0

Positive Controls:

WB: PC-12 cells, HEK-293 cells, HeLa cells, NIH/3T3 cells, C6 cells, mouse brain tissue, mouse lung tissue

IP: HEK-293 cells,

IHC: human colon cancer tissue, human breast cancer tissue

IF/ICC: HEK-293 cells,

FC (Intra): HeLa cells,

Background Information

ERK1 and ERK2 belongs to the protein kinase superfamily. It is involved in both the initiation and regulation of meiosis, mitosis, and postmitotic functions in differentiated cells by phosphorylating a number of transcription factors such as ELK-1. ERK1/2 catalyzed the reaction: ATP + a protein = ADP + a phosphoprotein. It is activated by tyrosine phosphorylation in response to INS and NGF. This antibody can recognize both ERK1 and ERK2 with the molecular mass of 38-44 kDa.

Notable Publications

| Author | Pubmed ID | Journal | Application |
|---------------|-----------|--------------------------------|-------------|
| Xiao-Feng Zhu | 36180975 | Phytother Res | WB |
| Hui Wang | 36243659 | Hepatobiliary Pancreat Dis Int | WB |
| Hongxia Li | 34558311 | Epigenomics | WB |

Storage

Storage:

Store at -20°C. Stable for one year after shipment.

Storage Buffer:

PBS with 0.02% sodium azide and 50% glycerol, pH7.3

Aliquoting is unnecessary for -20°C storage

For technical support and original validation data for this product please contact:

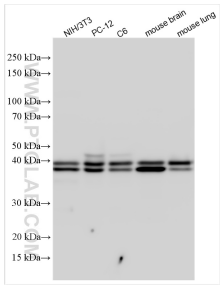
T: 4006900926

E: Proteintech-CN@ptglab.com

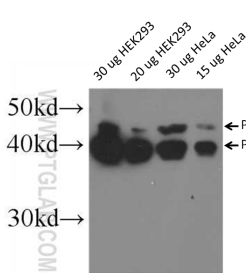
W: ptgcn.com

This product is exclusively available under Proteintech Group brand and is not available to purchase from any other manufacturer.

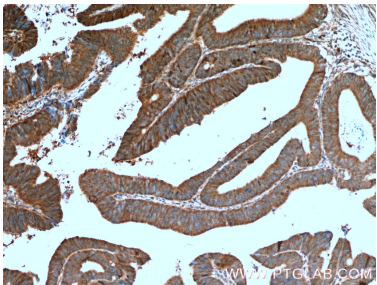
Selected Validation Data



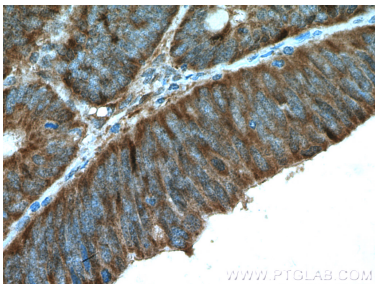
Various lysates were subjected to SDS PAGE followed by western blot with 11257-1-AP (ERK1/2 antibody) at dilution of 1:8000 incubated at room temperature for 1.5 hours.



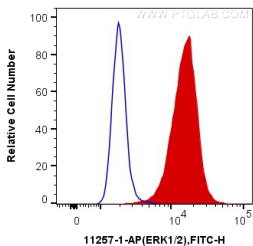
WB result of ERK1/2 antibody (11257-1-AP, 1:1000) with HeLa and HEK293 cells.



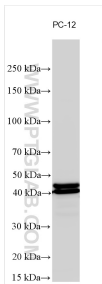
Immunohistochemical analysis of paraffin-embedded human colon cancer tissue slide using 11257-1-AP (ERK1/2 Antibody) at dilution of 1:200 (under 10x lens). Heat mediated antigen retrieval with Tris-EDTA buffer (pH 9.0).



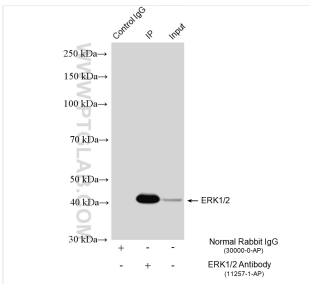
Immunohistochemical analysis of paraffin-embedded human colon cancer tissue slide using 11257-1-AP (ERK1/2 Antibody) at dilution of 1:200 (under 40x lens). Heat mediated antigen retrieval with Tris-EDTA buffer (pH 9.0).



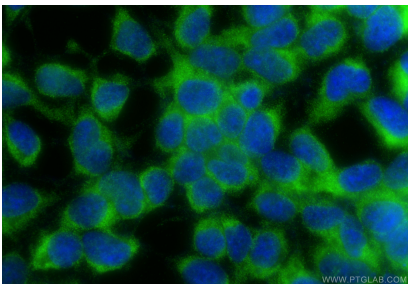
1X10⁶ HeLa cells were intracellularly stained with 0.4 ug Anti-Human ERK1/2 (11257-1-AP) and CoraLite®488-Conjugated AffiniPure Goat Anti-Rabbit IgG(H+L) at dilution 1:1000 (red), or 0.4 ug Control Antibody. Cells were fixed with 4% PFA and permeabilized with Flow Cytometry Perm Buffer.



Various lysates were subjected to SDS PAGE followed by western blot with 11257-1-AP (ERK1/2 antibody) at dilution of 1:6000 incubated at room temperature for 1.5 hours.



IP result of anti-ERK1/2 (IP:11257-1-AP, 4ug; Detection:11257-1-AP 1:3000) with HEK-293 cells lysate 1440 ug.



Immunofluorescent analysis of (-20°C Ethanol) fixed HEK-293 cells using ERK1/2 antibody (11257-1-AP) at dilution of 1:400 and CoraLite®488-Conjugated Goat Anti-Rabbit IgG(H+L) (SA00013-2).