

For Research Use Only

SH3BGRL Polyclonal antibody

Catalog Number: 11253-1-AP

1 Publications



Basic Information

Catalog Number:

11253-1-AP

Size:

450 ug/ml

Source:

Rabbit

Isotype:

IgG

Immunogen Catalog Number:

AG1780

GenBank Accession Number:

BC016709

GeneID (NCBI):

6451

UNIPROT ID:

O75368

Full Name:

SH3 domain binding glutamic acid-rich protein like

Calculated MW:

13 kDa

Observed MW:

13 kDa

Purification Method:

Antigen affinity purification

Recommended Dilutions:

WB 1:500-1:1000

IHC 1:50-1:500

Applications

Tested Applications:

WB, IHC, ELISA

Cited Applications:

WB

Species Specificity:

human, mouse

Cited Species:

human

Positive Controls:

WB : mouse colon tissue, mouse uterus tissue

IHC : human intrahepatic cholangiocarcinoma tissue,

Note-IHC: suggested antigen retrieval with TE buffer pH 9.0; (*) Alternatively, antigen retrieval may be performed with citrate buffer pH 6.0

Background Information

SH3BGRL, an adaptor protein, is one member of the SH3BGR family. SH3BGRL is ubiquitously expressed in varied human tissues and organs, including the bone marrow, heart, lung, liver, and kidney. SH3BGRL encodes a small protein with a conserved proline-rich PLPPQIF region and two motifs, Homer EVH1-binding and SH3-binding motifs. As a scaffold protein, SH3BGRL could participate in the protein-protein interaction for the integration or/and crosstalk of signal transduction, membrane trafficking, cytoskeletal rearrangements, and other key cellular processes.

Notable Publications

Author	Pubmed ID	Journal	Application
Yonghua Liu	39465506	Biomol Biomed	WB

Storage

Storage:

Store at -20°C. Stable for one year after shipment.

Storage Buffer:

PBS with 0.02% sodium azide and 50% glycerol pH 7.3.

Aliquoting is unnecessary for -20°C storage

For technical support and original validation data for this product please contact:

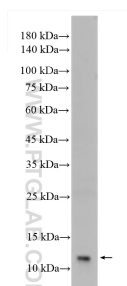
T: 4006900926

E: Proteintech-CN@ptglab.com

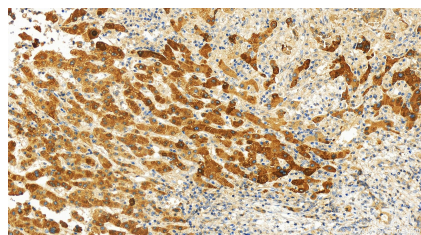
W: ptgcn.com

This product is exclusively available under Proteintech Group brand and is not available to purchase from any other manufacturer.

Selected Validation Data



mouse colon tissue were subjected to SDS PAGE followed by western blot with 11253-1-AP (SH3BGRL antibody) at dilution of 1:500 incubated at room temperature for 1.5 hours.



Immunohistochemical analysis of paraffin-embedded human intrahepatic cholangiocarcinoma tissue slide using 11253-1-AP (SH3BGRL antibody) at dilution of 1:50 (under 20x lens). Heat mediated antigen retrieval with Tris-EDTA buffer (pH 9.0).