

For Research Use Only

S100A10 Polyclonal antibody

Catalog Number: 11250-1-AP

Featured Product

37 Publications



Basic Information

Catalog Number:

11250-1-AP

Size:

500 µg/ml

Source:

Rabbit

Isotype:

IgG

Immunogen Catalog Number:

AG1779

GenBank Accession Number:

BC015973

GeneID (NCBI):

6281

UNIPROT ID:

P60903

Full Name:

S100 calcium binding protein A10

Calculated MW:

11 kDa

Observed MW:

11 kDa

Purification Method:

Antigen affinity purification

Recommended Dilutions:

WB 1:500-1:2000

IHC 1:100-1:1000

IF 1:50-1:500

Applications

Tested Applications:

FC, IF/ICC, IHC, WB, ELISA

Cited Applications:

WB, IP, IF, FC, IHC, ELISA

Species Specificity:

human

Cited Species:

human, rat, mouse

Note-IHC: suggested antigen retrieval with TE buffer pH 9.0; (*) Alternatively, antigen retrieval may be performed with citrate buffer pH 6.0

Positive Controls:

WB: A431 cells, HeLa cells, HT-29 cells, human lung tissue, HaCaT cells

IHC: human lung cancer tissue, human gliomas tissue, human pancreas cancer tissue, human skin tissue, human cervical cancer tissue, human prostate hyperplasia tissue

IF: HepG2 cells, HeLa cells

Background Information

S100A10, also known as p11, is a member of the S100 family of small, EF hand containing dimeric proteins. S100 proteins are localized in the cytoplasm and/or nucleus of a wide range of cells, and involved in the regulation of a number of cellular processes such as cell cycle progression and differentiation. S100A10 is present on the surface of endothelial and other cells in a heterotetrameric complex with another Ca(2+)-binding protein, annexin II. S100A10 may function in exocytosis and endocytosis.

Notable Publications

Author	Pubmed ID	Journal	Application
Xiao Zhai	34496892	J Nanobiotechnology	IF
Xi He	34496236	Cell Rep	
Monica R Langley	34493542	J Neurosci	IHC,IP

Storage

Storage:

Store at -20°C. Stable for one year after shipment.

Storage Buffer:

PBS with 0.02% sodium azide and 50% glycerol pH 7.3.

Aliquoting is unnecessary for -20°C storage

For technical support and original validation data for this product please contact:

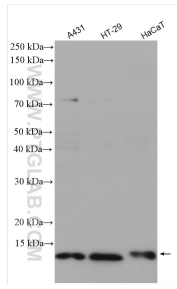
T: 4006900926

E: Proteintech-CN@ptglab.com

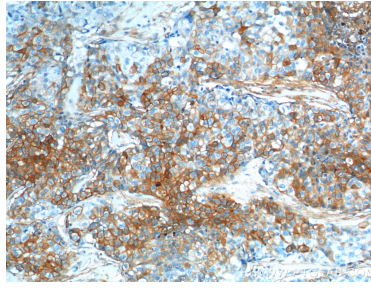
W: ptgcn.com

This product is exclusively available under Proteintech Group brand and is not available to purchase from any other manufacturer.

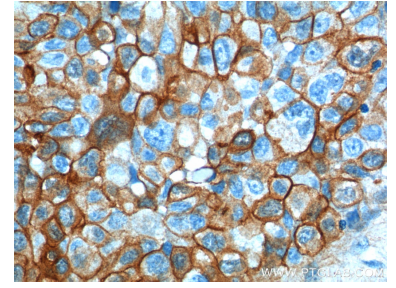
Selected Validation Data



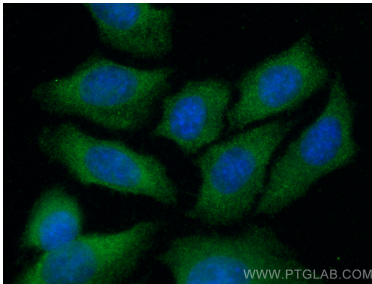
Various lysates were subjected to SDS PAGE followed by western blot with 11250-1-AP (S100A10 antibody) at dilution of 1:1000 incubated at room temperature for 1.5 hours.



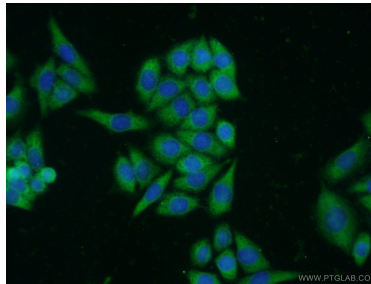
Immunohistochemical analysis of paraffin-embedded human lung cancer tissue slide using 11250-1-AP (S100A10 Antibody) at dilution of 1:400 (under 10x lens).



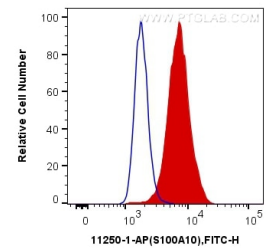
Immunohistochemical analysis of paraffin-embedded human lung cancer tissue slide using 11250-1-AP (S100A10 Antibody) at dilution of 1:400 (under 40x lens).



Immunofluorescent analysis of (-20°C Methanol) fixed HepG2 cells using S100A10 antibody (11250-1-AP) at dilution of 1:200 and CoraLite@488-Conjugated AffiniPure Goat Anti-Rabbit IgG(H+L).



Immunofluorescent analysis of HeLa cells using 11250-1-AP (S100A10 antibody) at dilution of 1:50 and Alexa Fluor 488-conjugated AffiniPure Goat Anti-Rabbit IgG(H+L).



1×10^6 HeLa cells were intracellularly stained with 0.2 μ g Anti-Human S100A10 (11250-1-AP) and CoraLite@488-Conjugated AffiniPure Goat Anti-Rabbit IgG(H+L) at dilution 1:1000 (red), or 0.2 μ g Control Antibody. Cells were fixed with 4% PFA and permeabilized with Flow Cytometry Perm Buffer (PF00011-C).