

G1P3 Polyclonal antibody

Catalog Number: 11246-1-AP

2 Publications

Basic Information

Catalog Number:

11246-1-AP

Size:

450 µg/ml

Source:

Rabbit

Isotype:

IgG

Immunogen Catalog Number:

AG1765

GenBank Accession Number:

BC015603

GeneID (NCBI):

2537

UNIPROT ID:

P09912

Full Name:

interferon, alpha-inducible protein 6

Calculated MW:

13 kDa

Purification Method:

Antigen affinity purification

Recommended Dilutions:

IHC 1:50-1:500

Applications

Tested Applications:

IHC, ELISA

Cited Applications:

WB, IHC

Species Specificity:

human

Cited Species:

human

Note-IHC: suggested antigen retrieval with TE buffer pH 9.0; (*) Alternatively, antigen retrieval may be performed with citrate buffer pH 6.0

Positive Controls:

IHC : human breast cancer tissue, human colon tissue

Background Information

G1P3, also named as IFI6, belongs to the FAM14 protein family and is localized in mitochondria. G1P3 is one of the interferon (IFN)-stimulated genes. It was reported as anti-apoptotic in myeloma, gastric and breast cancers (PMID: 29899394). G1P3 has 3 isoforms with the molecular mass of 13 kDa.

Notable Publications

Author	Pubmed ID	Journal	Application
Li Jianhua J	23832071	Nat Immunol	WB
Xiaohui Meng	37584284	Arthritis Rheumatol	IHC

Storage

Storage:

Store at -20°C. Stable for one year after shipment.

Storage Buffer:

PBS with 0.02% sodium azide and 50% glycerol pH 7.3.

Aliquoting is unnecessary for -20°C storage

For technical support and original validation data for this product please contact:

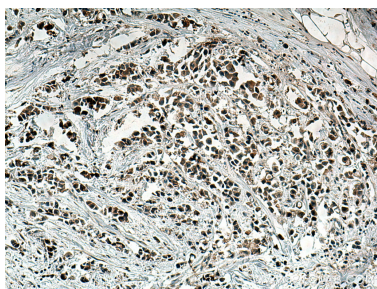
T: 4006900926

E: Proteintech-CN@ptglab.com

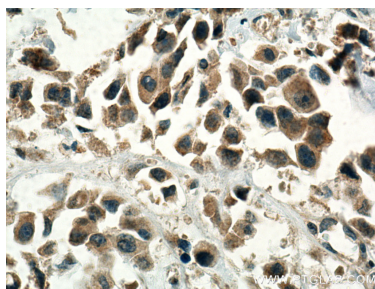
W: ptgcn.com

This product is exclusively available under Proteintech Group brand and is not available to purchase from any other manufacturer.

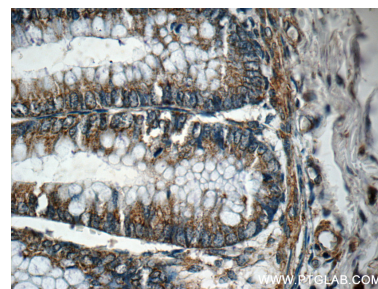
Selected Validation Data



Immunohistochemical analysis of paraffin-embedded human breast cancer tissue slide using 11246-1-AP (G1P3 antibody) at dilution of 1:200 (under 10x lens). Heat mediated antigen retrieval with Tris-EDTA buffer (pH 9.0).



Immunohistochemical analysis of paraffin-embedded human breast cancer tissue slide using 11246-1-AP (G1P3 antibody) at dilution of 1:200 (under 40x lens). Heat mediated antigen retrieval with Tris-EDTA buffer (pH 9.0).



Immunohistochemical analysis of paraffin-embedded human colon tissue slide using 11246-1-AP (G1P3 Antibody) at dilution of 1:50 (under 40x lens).