

For Research Use Only

COXIV Polyclonal antibody

Catalog Number: 11242-1-AP

Featured Product

458 Publications



Basic Information

Catalog Number:

11242-1-AP

Concentration:

900 ug/ml

Source:

Rabbit

Isotype:

IgG

Immunogen Catalog Number:

AG1640

GenBank Accession Number:

BC021236

GeneID (NCBI):

1327

UNIPROT ID:

P13073

Full Name:

cytochrome c oxidase subunit IV isoform 1

Calculated MW:

19.6 kDa

Observed MW:

17-18 kDa

Purification Method:

Antigen affinity purification

Recommended Dilutions:

WB 1:5000-1:20000

IP 0.5-4.0 ug for 1.0-3.0 mg of total protein lysate

IHC 1:200-1:1000

IF/ICC 1:50-1:500

Applications

Tested Applications:

WB, IHC, IF/ICC, IP, ELISA

Cited Applications:

WB, IHC, IF, IP, ChIP

Species Specificity:

human, mouse, rat

Cited Species:

human, mouse, rat, pig, canine, goat

Note-IHC: suggested antigen retrieval with TE buffer pH 9.0; (*) Alternatively, antigen retrieval may be performed with citrate buffer pH 6.0

Positive Controls:

WB: HeLa cells, HepG2 cells, rat liver tissue, rat brain tissue, MCF-7 cells, NIH/3T3 cells, Jurkat cells, mouse skeletal muscle tissue

IP: mouse skeletal muscle tissue,

IHC: human prostate cancer tissue, human pancreas cancer tissue, human heart tissue

IF/ICC: HepG2 cells,

Background Information

COX4l1, also named as COX4 and COXIV-1, belongs to the cytochrome c oxidase IV family. It is one of the nuclear-coded polypeptide chains of cytochrome c oxidase, the terminal oxidase in mitochondrial electron transport. COX4l1 is a marker for mitochondria. It has two isoforms (isoform 1 and 2). Isoform 1(COX4l1) is ubiquitously expressed and isoform 2 is highly expressed in lung tissues. COX4l1 is commonly used as a loading control. This antibody was generated against full length COX4l1 protein and cross reacts with COX4l2.

Notable Publications

Author	Pubmed ID	Journal	Application
Enrico Zampese	36179023	Sci Adv	IF
Lu Lu	36183875	Environ Pollut	WB
Yipeng Du	30279144	EBioMedicine	WB

Storage

Storage:

Store at -20°C. Stable for one year after shipment.

Storage Buffer:

PBS with 0.02% sodium azide and 50% glycerol, pH7.3

Aliquoting is unnecessary for -20°C storage

For technical support and original validation data for this product please contact:

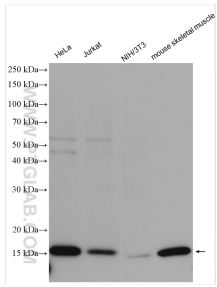
T: 4006900926

E: Proteintech-CN@ptglab.com

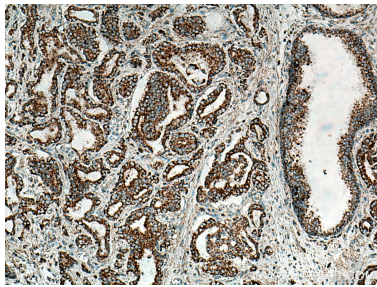
W: ptgcn.com

This product is exclusively available under Proteintech Group brand and is not available to purchase from any other manufacturer.

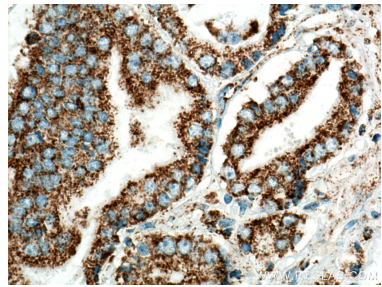
Selected Validation Data



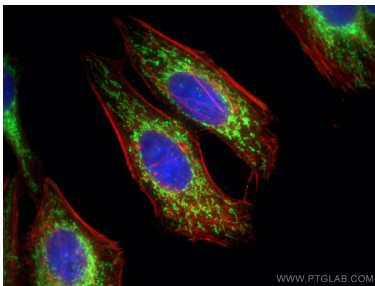
Various lysates were subjected to SDS PAGE followed by western blot with 11242-1-AP (COXIV antibody) at dilution of 1:10000 incubated at room temperature for 1.5 hours.



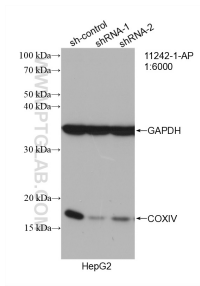
Immunohistochemical analysis of paraffin-embedded human prostate cancer tissue slide using 11242-1-AP (COXIV antibody) at dilution of 1:1000 (under 10x lens). Heat mediated antigen retrieval with Tris-EDTA buffer (pH 9.0).



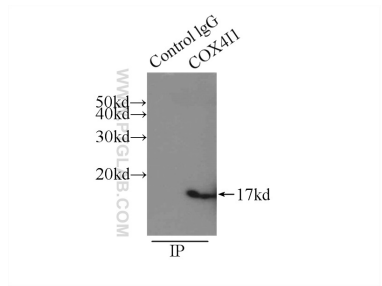
Immunohistochemical analysis of paraffin-embedded human prostate cancer tissue slide using 11242-1-AP (COXIV antibody) at dilution of 1:1000 (under 40x lens). Heat mediated antigen retrieval with Tris-EDTA buffer (pH 9.0).



Immunofluorescent analysis of (4% PFA) fixed HepG2 cells using COXIV antibody (11242-1-AP) at dilution of 1:200 and CoraLite® 488-Conjugated AffiniPure Goat Anti-Rabbit IgG(H+L), CL594-Phalloidin (red).



WB result of COXIV antibody (11242-1-AP; 1:6000; incubated at room temperature for 1.5 hours) with sh-Control and sh-COXIV transfected HepG2 cells.



IP result of anti-COXIV (IP:11242-1-AP, 3ug; Detection:11242-1-AP 1:1000) with mouse skeletal muscle tissue lysate 3500ug.