

EDEM2 Polyclonal antibody

Catalog Number: 11241-1-AP

Basic Information

Catalog Number:

11241-1-AP

Size:

240 µg/ml

Source:

Rabbit

Isotype:

IgG

Immunogen Catalog Number:

AG1755

GenBank Accession Number:

BC016184

GeneID (NCBI):

55741

UNIPROT ID:

Q9BV94

Full Name:

ER degradation enhancer,
mannosidase alpha-like 2

Calculated MW:

64.8 kDa

Observed MW:

60-65 kDa

Purification Method:

Antigen affinity purification

Recommended Dilutions:

WB 1:500-1:1000

IHC 1:50-1:500

Applications

Tested Applications:

IHC, WB, ELISA

Species Specificity:

human, mouse, rat

**Note-IHC: suggested antigen retrieval with
TE buffer pH 9.0; (*) Alternatively, antigen
retrieval may be performed with citrate
buffer pH 6.0**

Positive Controls:

WB : HepG2 cells, mouse skeletal muscle tissue, U-251
cells

IHC : human heart tissue,

Background Information

Storage

Storage:

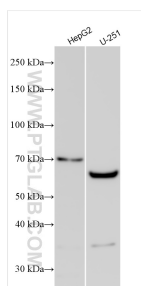
Store at -20°C. Stable for one year after shipment.

Storage Buffer:

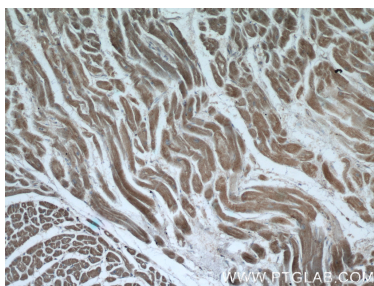
PBS with 0.02% sodium azide and 50% glycerol pH 7.3.

Aliquoting is unnecessary for -20°C storage

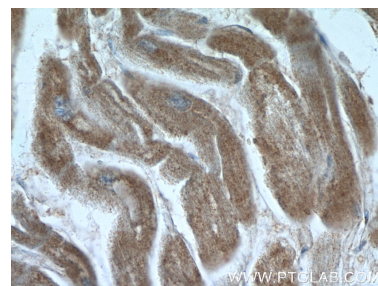
Selected Validation Data



Various lysates were subjected to SDS PAGE followed by western blot with 11241-1-AP (EDEM2 antibody) at dilution of 1:500 incubated at room temperature for 1.5 hours.



Immunohistochemical analysis of paraffin-embedded human heart tissue slide using 11241-1-AP (EDEM2 Antibody) at dilution of 1:50 (under 10x lens).



Immunohistochemical analysis of paraffin-embedded human heart tissue slide using 11241-1-AP (EDEM2 Antibody) at dilution of 1:50 (under 40x lens).