

For Research Use Only

# CREB3L1,OASIS Polyclonal antibody

Catalog Number:11235-2-AP

Featured Product

12 Publications



## Basic Information

Catalog Number:

11235-2-AP

Size:

850  $\mu$ g/ml

Source:

Rabbit

Isotype:

IgG

Immunogen Catalog Number:

AG1757

GenBank Accession Number:

BC015781

GeneID (NCBI):

90993

UNIPROT ID:

Q96BA8

Full Name:

cAMP responsive element binding  
protein 3-like 1

Calculated MW:

57 kDa

Observed MW:

55-58 kDa and 84 kDa

Purification Method:

Antigen affinity purification

Recommended Dilutions:

WB 1:500-1:1000

IHC 1:20-1:200

IF/ICC 1:50-1:500

## Applications

Tested Applications:

WB, IHC, IF/ICC, ELISA

Cited Applications:

WB, IHC, IF

Species Specificity:

human, mouse, rat

Cited Species:

human, mouse, rat

**Note-IHC: suggested antigen retrieval with  
TE buffer pH 9.0; (\*) Alternatively, antigen  
retrieval may be performed with citrate  
buffer pH 6.0**

Positive Controls:

WB : A549 cells, COLO 320 cells

IHC : human prostate cancer tissue,

IF/ICC : A549 cells,

## Background Information

Cyclic AMP-responsive element-binding protein 3-like protein 1 (CREB3L1) belongs to a family of transcription factors that are synthesized as membrane-bound precursors in the endoplasmic reticulum (ER) and then transported to the Golgi where they are activated through regulated intramembrane proteolysis (RIP). Also it participates in ER-stress response in astrocytes in the central nervous system. It may have a role in gliosis, and involves in activation of transcription through box-B element but not CRE. CREB3L1 acts as a transcription repressor in proliferation of virus-infected cell. The full-length precursor form (approximately 84 kDa) of CREB3L1 and the matured form of CREB3L1 is 58 kDa. (PMID: 20668028)

## Notable Publications

Author	Pubmed ID	Journal	Application
Mei-Xuan Wan	36299877	Front Pharmacol	WB
Xiaomei Liu	30524373	Front Endocrinol (Lausanne)	WB
Wei Xiao	31293656	J Cancer	IHC

## Storage

Storage:

Store at -20°C. Stable for one year after shipment.

Storage Buffer:

PBS with 0.02% sodium azide and 50% glycerol pH 7.3.

Aliquoting is unnecessary for -20°C storage

For technical support and original validation data for this product please contact:

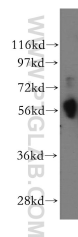
T: 4006900926

E: [Proteintech-CN@ptglab.com](mailto:Proteintech-CN@ptglab.com)

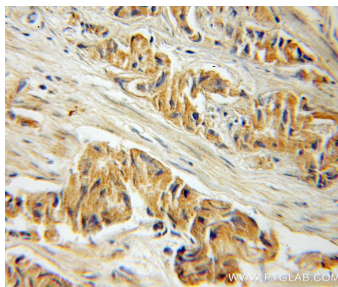
W: [ptgcn.com](http://ptgcn.com)

**This product is exclusively available under Proteintech Group brand and is not available to purchase from any other manufacturer.**

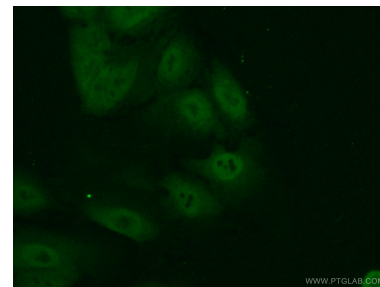
## Selected Validation Data



A549 cells were subjected to SDS PAGE followed by western blot with 11235-2-AP (CREB3L1, OASIS antibody) at dilution of 1:300 incubated at room temperature for 1.5 hours. This batch of A549 cells lysate predominantly expressed the maturer form likely due to cell stage.



Immunohistochemical analysis of paraffin-embedded human prostate cancer using 11235-2-AP (CREB3L1, OASIS antibody) at dilution of 1:50 (under 25x Lens).



Immunofluorescent analysis of (10% Formaldehyde) fixed A549 cells using 11235-2-AP (CREB3L1, OASIS antibody) at dilution of 1:50 and Alexa Fluor 488-conjugated Goat Anti-Rabbit IgG(H+L).