

For Research Use Only

Casein Kinase 1 Epsilon Polyclonal antibody

Catalog Number: 11230-1-AP

2 Publications



Basic Information

Catalog Number:

11230-1-AP

Concentration:

400 µg/ml

Source:

Rabbit

Isotype:

IgG

Immunogen Catalog Number:

AG1742

GenBank Accession Number:

BC006490

GeneID (NCBI):

1454

UNIPROT ID:

P49674

Full Name:

casein kinase 1, epsilon

Calculated MW:

47 kDa

Observed MW:

46-52 kDa

Purification Method:

Antigen affinity purification

Recommended Dilutions:

WB 1:200-1:1000

IHC 1:50-1:500

Applications

Tested Applications:

WB, IHC, ELISA

Cited Applications:

WB

Species Specificity:

human, mouse, rat

Cited Species:

human, mouse

Note-IHC: suggested antigen retrieval with TE buffer pH 9.0; (*) Alternatively, antigen retrieval may be performed with citrate buffer pH 6.0

Positive Controls:

WB : A431 cells, mouse brain tissue

IHC : human breast cancer tissue, human heart tissue, human kidney tissue, human testis tissue, human ovary tissue

Background Information

CSNK1E(Casein kinase I isoform epsilon) is also named as CKIε, CKI-epsilon and belongs to the casein kinase I subfamily. It plays a significant role in delaying the negative feedback signal within the transcription-translation-based autoregulatory loop that composes the core of the circadian mechanism and makes an ideal target for pharmaceutical compounds influencing circadian rhythms, sleep, and jet lag, as well as other physiologic and metabolic processes under circadian regulation(PMID:10775102). It can be autophosphorylated(PMID:19690332).

Notable Publications

Author	Pubmed ID	Journal	Application
Lan Zhou	39667579	Cell Mol Gastroenterol Hepatol	WB
Chen Hao H	23297342	Mol Cell Biol	WB

Storage

Storage:

Store at -20°C. Stable for one year after shipment.

Storage Buffer:

PBS with 0.02% sodium azide and 50% glycerol, pH7.3

Aliquoting is unnecessary for -20°C storage

For technical support and original validation data for this product please contact:

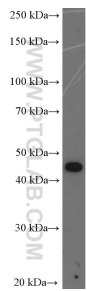
T: 4006900926

E: Proteintech-CN@ptglab.com

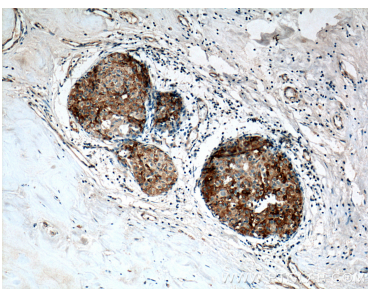
W: ptgcn.com

This product is exclusively available under Proteintech Group brand and is not available to purchase from any other manufacturer.

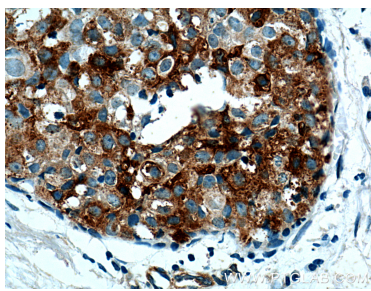
Selected Validation Data



A431 cells were subjected to SDS PAGE followed by western blot with 11230-1-AP (Casein Kinase 1 epsilon antibody at dilution of 1:300 incubated at room temperature for 1.5 hours.



Immunohistochemical analysis of paraffin-embedded human breast cancer tissue slide using 11230-1-AP (Casein Kinase 1 epsilon antibody at dilution of 1:200 (under 10x lens). Heat mediated antigen retrieval with Tris-EDTA buffer (pH 9.0).



Immunohistochemical analysis of paraffin-embedded human breast cancer tissue slide using 11230-1-AP (Casein Kinase 1 epsilon antibody at dilution of 1:200 (under 40x lens). Heat mediated antigen retrieval with Tris-EDTA buffer (pH 9.0).