

For Research Use Only

ILVBL Polyclonal antibody

Catalog Number: 11220-1-AP **2 Publications**



Basic Information

Catalog Number: 11220-1-AP	GenBank Accession Number: BC011761	Purification Method: Antigen affinity purification
Source: Rabbit	GeneID (NCBI): 10994	Recommended Dilutions: WB: 1:500-1:3000 IHC: 1:800-1:3200 IF/ICC: 1:200-1:800
Isotype: IgG	UNIPROT ID: A1L0T0	
Immunogen Catalog Number: AG1729	Full Name: ilvB (bacterial acetolactate synthase)-like	
	Calculated MW: 68 kDa	
	Observed MW: 60-65 kDa	

Applications

Tested Applications:
WB, IHC, IF/ICC, ELISA

Cited Applications:
WB

Species Specificity:
human, mouse, rat

Cited Species:
human

Note-IHC: suggested antigen retrieval with TE buffer pH 9.0; (*) Alternatively, antigen retrieval may be performed with citrate buffer pH 6.0

Positive Controls:

WB: A549 cells, human thyroid gland tissue, HepG2 cells, HeLa cells

IHC: human colon cancer tissue,

IF/ICC: HeLa cells,

Background Information

Notable Publications

Author	Pubmed ID	Journal	Application
Yang Liu	41912662	Nat Neurosci	
Carolyn J Klose	40753078	Nat Commun	WB

Storage

Storage:

Store at -20°C. Stable for one year after shipment.

Storage Buffer:

PBS with 0.02% sodium azide and 50% glycerol, pH7.3

Aliquoting is unnecessary for -20°C storage

For technical support and original validation data for this product please contact:

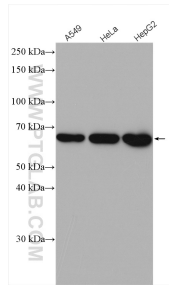
T: 4006900926

E: Proteintech-CN@ptglab.com

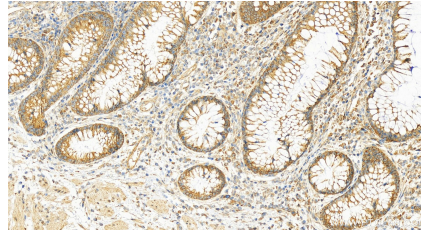
W: ptgcn.com

This product is exclusively available under Proteintech Group brand and is not available to purchase from any other manufacturer.

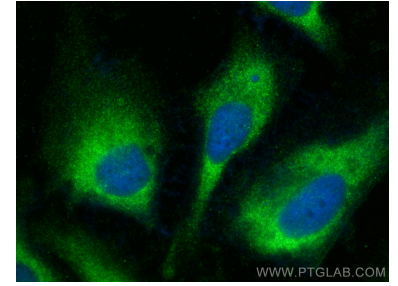
Selected Validation Data



Various lysates were subjected to SDS PAGE followed by western blot with 11220-1-AP (ILVBL antibody) at dilution of 1:1500 incubated at room temperature for 1.5 hours.



Immunohistochemical analysis of paraffin-embedded human colon cancer tissue slide using 11220-1-AP (ILVBL antibody) at dilution of 1:1600 (under 20x lens). Heat mediated antigen retrieval with Tris-EDTA buffer (pH 9.0).



Immunofluorescent analysis of (-20°C Ethanol) fixed HeLa cells using ILVBL antibody (11220-1-AP) at dilution of 1:400 and CoraLite®488-Conjugated Goat Anti-Rabbit IgG(H+L) (SA00013-2).