

ALDOA Polyclonal antibody

Catalog Number: 11217-1-AP

Featured Product

62 Publications

Basic Information

Catalog Number:

11217-1-AP

Concentration:

450 ug/ml

Source:

Rabbit

Isotype:

IgG

Immunogen Catalog Number:

AG1726

GenBank Accession Number:

BC016800

GeneID (NCBI):

226

UNIPROT ID:

P04075

Full Name:

aldolase A, fructose-bisphosphate

Calculated MW:

39 kDa

Observed MW:

35-40 kDa

Purification Method:

Antigen affinity purification

Recommended Dilutions:

WB 1:5000-1:50000

IP 0.5-4.0 ug for 1.0-3.0 mg of total protein lysate

IHC 1:100-1:400

IF/ICC 1:50-1:500

Applications

Tested Applications:

WB, IHC, IF/ICC, IP, ELISA

Cited Applications:

WB, IHC, IF, IP, CoIP, RIP

Species Specificity:

human, mouse, rat

Cited Species:

human, mouse, rat, pig, sheep

Note-IHC: suggested antigen retrieval with TE buffer pH 9.0; (*) Alternatively, antigen retrieval may be performed with citrate buffer pH 6.0

Positive Controls:

WB : HEK-293 cells, HeLa cells, A549 cells, Jurkat cells, mouse liver tissue, rat liver tissue, HepG2 cells, MCF-7 cells, NIH/3T3 cells

IP : HepG2 cells,

IHC : human colon cancer tissue, human lung cancer tissue, human skeletal muscle tissue

IF/ICC : HeLa cells,

Background Information

ALDOA (Fructose-bisphosphate aldolase A) is also named as lung cancer antigen NY-LU-1, muscle-type aldolase, ALDA and belongs to the class I fructose-bisphosphate aldolase family. The ALDOA gene encodes a homotetrameric protein (PMID:14615364). It is found in skeletal muscle and red blood cells, and functions in glycolysis, promoting the reversible cleavage of FBP to triose phosphate, G-3-P and DHAP. ALDOA is upregulated in various cancers, including human lung squamous and renal cell carcinomas (PMID:19937139).

Notable Publications

Author	Pubmed ID	Journal	Application
Bing Sun	27684953	PLoS One	WB
Salvador Polo-Genere	36136852	Noncoding RNA	RIP
Menghui Gu	36247245	Am J Transl Res	IHC, WB

Storage

Storage:

Store at -20°C. Stable for one year after shipment.

Storage Buffer:

PBS with 0.02% sodium azide and 50% glycerol pH 7.3.

Aliquoting is unnecessary for -20°C storage

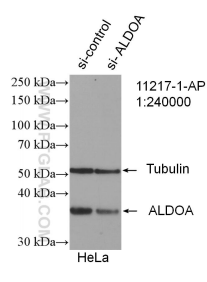
For technical support and original validation data for this product please contact:

T: 4006900926

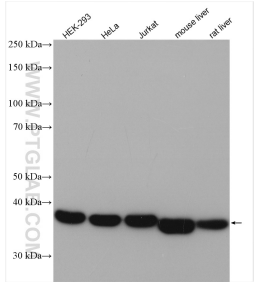
E: Proteintech-CN@ptglab.comW: ptgcn.com

This product is exclusively available under Proteintech Group brand and is not available to purchase from any other manufacturer.

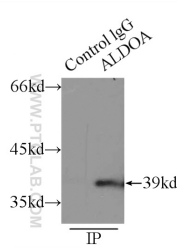
Selected Validation Data



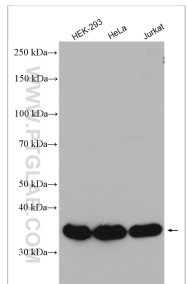
WB result of ALDOA antibody (11217-1-AP; 1:240000; incubated at room temperature for 1.5 hours) with sh-Control and sh-ALDOA transfected HeLa cells.



Various lysates were subjected to SDS PAGE followed by western blot with 11217-1-AP (ALDOA antibody) at dilution of 1:10000 incubated at room temperature for 1.5 hours.



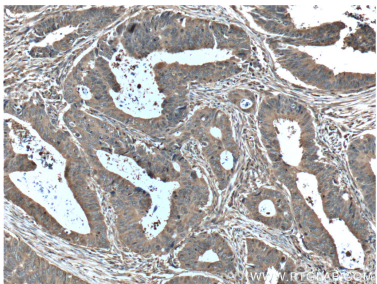
IP result of anti-ALDOA (IP:11217-1-AP, 3ug; Detection:11217-1-AP 1:1000) with HepG2 cells lysate 6000ug.



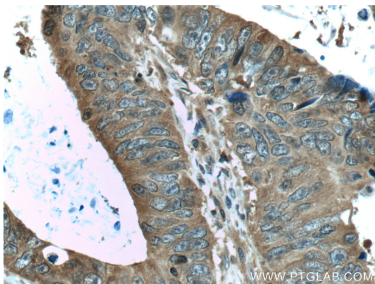
Various lysates were subjected to SDS PAGE followed by western blot with 11217-1-AP (ALDOA antibody) at dilution of 1:8000 incubated at room temperature for 1.5 hours.



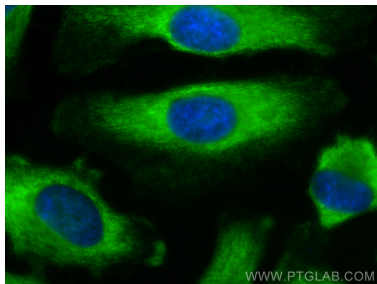
Various lysates were subjected to SDS PAGE followed by western blot with 11217-1-AP (ALDOA antibody) at dilution of 1:10000 incubated at room temperature for 1.5 hours.



Immunohistochemical analysis of paraffin-embedded human colon cancer tissue slide using 11217-1-AP (ALDOA Antibody) at dilution of 1:200 (under 10x lens). Heat mediated antigen retrieval with Tris-EDTA buffer (pH 9.0).



Immunohistochemical analysis of paraffin-embedded human colon cancer tissue slide using 11217-1-AP (ALDOA Antibody) at dilution of 1:200 (under 40x lens). Heat mediated antigen retrieval with Tris-EDTA buffer (pH 9.0).



Immunofluorescent analysis of (-20°C Methanol) fixed HeLa cells using ALDOA antibody (11217-1-AP) at dilution of 1:200 and Multi-rAb CoraLite ® Plus 488-Goat Anti-Rabbit Recombinant Secondary Antibody (H+L) (RGAR002).