

For Research Use Only

# SUMF2 Polyclonal antibody

Catalog Number: 11210-1-AP **1 Publications**



## Basic Information

**Catalog Number:**

11210-1-AP

**Size:**

1000 µg/ml

**Source:**

Rabbit

**Isotype:**

IgG

**Immunogen Catalog Number:**

AG1711

**GenBank Accession Number:**

BC015600

**GeneID (NCBI):**

25870

**UNIPROT ID:**

Q8NBJ7

**Full Name:**

sulfatase modifying factor 2

**Calculated MW:**

34 kDa

**Observed MW:**

34 kDa

**Purification Method:**

Antigen affinity purification

**Recommended Dilutions:**

WB 1:1000-1:5000

IP 0.5-4.0 µg for 1.0-3.0 mg of total protein lysate

IHC 1:50-1:500

IF 1:50-1:500

## Applications

**Tested Applications:**

IF/ICC, IHC, IP, WB, ELISA

**Cited Applications:**

WB, IHC

**Species Specificity:**

human, mouse, rat

**Cited Species:**

rat

**Note-IHC: suggested antigen retrieval with TE buffer pH 9.0; (\*) Alternatively, antigen retrieval may be performed with citrate buffer pH 6.0**

**Positive Controls:**

**WB:** A431 cells, human skin tissue, human spleen tissue

**IP:** A431 cells, HeLa cells

**IHC:** human breast cancer tissue,

**IF:** A431 cells,

## Background Information

## Notable Publications

Author	Pubmed ID	Journal	Application
Chuanfeng Fang	26722390	Int J Clin Exp Pathol	WB,IHC

## Storage

**Storage:**

Store at -20°C. Stable for one year after shipment.

**Storage Buffer:**

PBS with 0.02% sodium azide and 50% glycerol pH 7.3.

Aliquoting is unnecessary for -20°C storage

For technical support and original validation data for this product please contact:

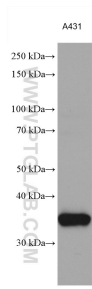
T: 4006900926

E: Proteintech-CN@ptglab.com

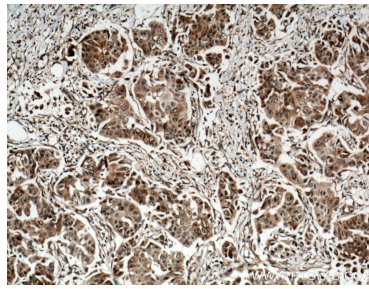
W: ptgcn.com

**This product is exclusively available under Proteintech Group brand and is not available to purchase from any other manufacturer.**

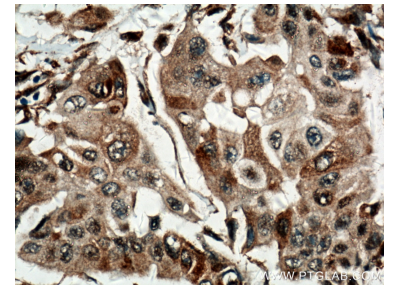
## Selected Validation Data



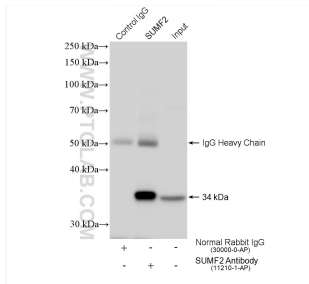
A431 cell lysates were subjected to SDS PAGE followed by western blot with 11210-1-AP (SUMF2 antibody) at dilution of 1:2500 incubated at room temperature for 1.5 hours.



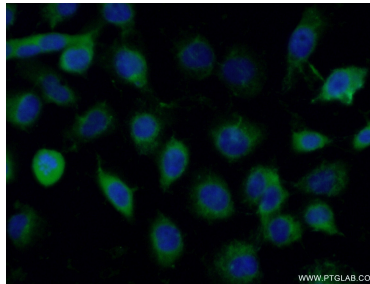
Immunohistochemical analysis of paraffin-embedded human breast cancer tissue slide using 11210-1-AP (SUMF2 antibody) at dilution of 1:200 (under 10x lens. Heat mediated antigen retrieval with Tris-EDTA buffer (pH 9.0).



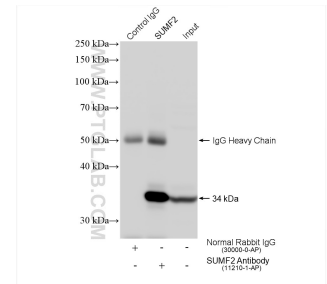
Immunohistochemical analysis of paraffin-embedded human breast cancer tissue slide using 11210-1-AP (SUMF2 antibody) at dilution of 1:200 (under 40x lens. Heat mediated antigen retrieval with Tris-EDTA buffer (pH 9.0).



IP result of anti-SUMF2 (IP:11210-1-AP, 4ug; Detection:11210-1-AP 1:2000) with A431 cells lysate 2640 ug.



Immunofluorescent analysis of (-20°C Ethanol) fixed A431 cells using 11210-1-AP (SUMF2 antibody) at dilution of 1:50 and Alexa Fluor 488-conjugated AffiniPure Goat Anti-Rabbit IgG(H+L).



IP result of anti-SUMF2 (IP:11210-1-AP, 4ug; Detection:11210-1-AP 1:2000) with HeLa cells lysate 1560 ug.