

For Research Use Only

# Alpha Parvin/Actopaxin Polyclonal antibody

Catalog Number: 11202-1-AP

Featured Product

3 Publications



## Basic Information

Catalog Number:

11202-1-AP

Size:

133 µg/ml

Source:

Rabbit

Isotype:

IgG

Immunogen Catalog Number:

AG1694

GenBank Accession Number:

BC016713

GeneID (NCBI):

55742

UNIPROT ID:

Q9NVD7

Full Name:

parvin, alpha

Calculated MW:

42 kDa

Observed MW:

42-45 kDa

Purification Method:

Antigen affinity purification

Recommended Dilutions:

WB 1:500-1:1000

IHC 1:20-1:200

## Applications

Tested Applications:

WB, IHC, ELISA

Cited Applications:

WB, IHC

Species Specificity:

human, mouse, rat

Cited Species:

human, mouse

**Note-IHC: suggested antigen retrieval with TE buffer pH 9.0; (\*) Alternatively, antigen retrieval may be performed with citrate buffer pH 6.0**

Positive Controls:

WB : human liver tissue, Jurkat cells, HeLa cells, human kidney tissue

IHC : human prostate cancer tissue,

## Background Information

### Notable Publications

Author	Pubmed ID	Journal	Application
Alessandro Bortolami	36207442	Cell Death Differ	WB
Cong Huang	33718092	Transl Androl Urol	IHC
Midori Takeda	39329755	Cells	IHC

## Storage

Storage:

Store at -20°C. Stable for one year after shipment.

Storage Buffer:

PBS with 0.02% sodium azide and 50% glycerol pH 7.3.

Aliquoting is unnecessary for -20°C storage

For technical support and original validation data for this product please contact:

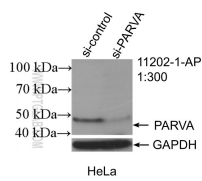
T: 4006900926

E: [Proteintech-CN@ptglab.com](mailto:Proteintech-CN@ptglab.com)

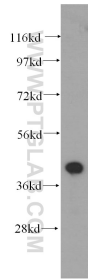
W: [ptgcn.com](http://ptgcn.com)

This product is exclusively available under Proteintech Group brand and is not available to purchase from any other manufacturer.

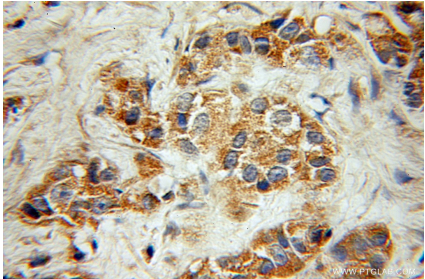
Selected Validation Data



WB result of  $\alpha$ -Parvin/Actopaxin antibody (11202-1-AP; 1:300; incubated at room temperature for 1.5 hours) with sh-Control and sh- $\alpha$ -Parvin/Actopaxin transfected HeLa cells.



human liver tissue were subjected to SDS PAGE followed by western blot with 11202-1-AP (Actopaxin antibody) at dilution of 1:500 incubated at room temperature for 1.5 hours.



Immunohistochemical analysis of paraffin-embedded human prostate cancer using 11202-1-AP (Actopaxin antibody) at dilution of 1:50 (under 10x lens).