

Syntaxin 16 Polyclonal antibody

Catalog Number: 11201-1-AP

5 Publications

Basic Information

Catalog Number:

11201-1-AP

Size:

333 µg/ml

Source:

Rabbit

Isotype:

IgG

Immunogen Catalog Number:

AG1657

GenBank Accession Number:

BC019042

GeneID (NCBI):

8675

UNIPROT ID:

O14662

Full Name:

syntaxin 16

Calculated MW:

37 kDa

Observed MW:

37 kDa

Purification Method:

Antigen affinity purification

Recommended Dilutions:

WB 1:500-1:2000

IHC 1:20-1:200

Applications

Tested Applications:

IHC, WB, ELISA

Cited Applications:

WB, IF

Species Specificity:

human, mouse, rat

Cited Species:

human, mouse

Note-IHC: suggested antigen retrieval with TE buffer pH 9.0; (*) Alternatively, antigen retrieval may be performed with citrate buffer pH 6.0

Positive Controls:

WB : HEK-293 cells, HepG2 cells

IHC : human colon cancer tissue,

Background Information

Syntaxin 16 (STX16), also named as SYN16, belongs to the syntaxin family. Syntaxins are target membrane SNAREs (Soluble NSF attachment protein receptors) which are membrane components that determine the specificity of the docking and fusion of vesicles to target membranes. STX16 is localized to the Golgi apparatus.

Notable Publications

Author	Pubmed ID	Journal	Application
Linda Cruz	27795424	J Virol	WB
Sean-Patrick Riechers	26908611	Hum Mol Genet	WB
Gustaf E Rydell	24703428	Traffic	WB

Storage

Storage:

Store at -20°C. Stable for one year after shipment.

Storage Buffer:

PBS with 0.02% sodium azide and 50% glycerol pH 7.3.

Aliquoting is unnecessary for -20°C storage

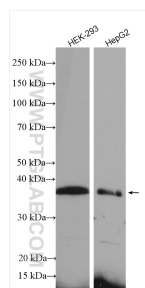
For technical support and original validation data for this product please contact:

T: 4006900926

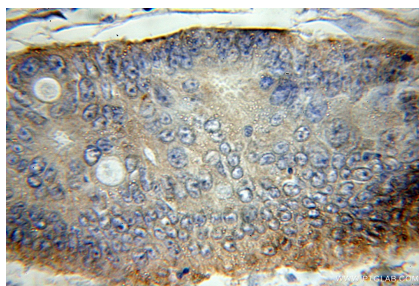
E: Proteintech-CN@ptglab.comW: ptgcn.com

This product is exclusively available under Proteintech Group brand and is not available to purchase from any other manufacturer.

Selected Validation Data



Various lysates were subjected to SDS PAGE followed by western blot with 11201-1-AP (Syntaxin 16 antibody) at dilution of 1:1000 incubated at room temperature for 1.5 hours.



Immunohistochemical analysis of paraffin-embedded human colon cancer using 11201-1-AP (Syntaxin 16 antibody) at dilution of 1:50 (under 10x lens).