

## BAP31 Polyclonal antibody

Catalog Number: 11200-1-AP

Featured Product

21 Publications

## Basic Information

## Catalog Number:

11200-1-AP

## Concentration:

600 ug/ml

## Source:

Rabbit

## Isotype:

IgG

## Immunogen Catalog Number:

AG1668

## GenBank Accession Number:

BC014323

## GeneID (NCBI):

10134

## UNIPROT ID:

P51572

## Full Name:

B-cell receptor-associated protein 31

## Calculated MW:

28 kDa

## Observed MW:

28 kDa

## Purification Method:

Antigen affinity purification

## Recommended Dilutions:

WB 1:5000-1:50000

IP 0.5-4.0 ug for 1.0-3.0 mg of total protein lysate

IHC 1:50-1:500

IF/ICC 1:50-1:500

## Applications

## Tested Applications:

WB, IHC, IF/ICC, IP, ELISA

## Cited Applications:

WB, IHC, IF, IP

## Species Specificity:

human, mouse, rat

## Cited Species:

human, mouse, rat

**Note-IHC: suggested antigen retrieval with TE buffer pH 9.0; (\*) Alternatively, antigen retrieval may be performed with citrate buffer pH 6.0**

## Positive Controls:

**WB:** A431 cells, human placenta tissue, HEK-293 cells, HeLa cells, mouse placenta tissue, MCF-7 cells, THP-1 cells, mouse brain tissue, mouse liver tissue, rat brain tissue, rat liver tissue

**IP:** A431 cells,

**IHC:** human breast cancer tissue, human colon tissue, human colon cancer tissue

**IF/ICC:** HeLa cells,

## Background Information

BAP31, also known as BCAP31, is a chaperone protein abundant in the endoplasmic reticulum (ER). BAP31 plays a role in the export of secreted proteins in the ER, the recognition of abnormally folded proteins, and their targeting to the ER-associated-degradation (ERAD). CDIP1 and BAP31 interact upon ER stress to regulate the mitochondrial apoptosis pathway (PMID: 24139803). It also serves as a cargo receptor for the export of transmembrane proteins. BAP31 may be involved in apoptosis.

## Notable Publications

Author	Pubmed ID	Journal	Application
Guo-Xun Li	36210579	Int J Biochem Cell Biol	WB
Shiya Cheng	36264786	Science	IF
Chengfeng Merriman	31591269	J Biol Chem	WB, IF

## Storage

## Storage:

Store at -20°C. Stable for one year after shipment.

## Storage Buffer:

PBS with 0.02% sodium azide and 50% glycerol pH 7.3.

Aliquoting is unnecessary for -20°C storage

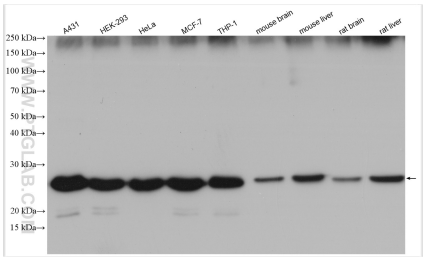
For technical support and original validation data for this product please contact:

T: 4006900926

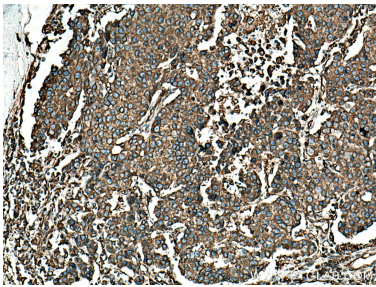
E: [Proteintech-CN@ptglab.com](mailto:Proteintech-CN@ptglab.com)W: [ptgcn.com](http://ptgcn.com)

This product is exclusively available under Proteintech Group brand and is not available to purchase from any other manufacturer.

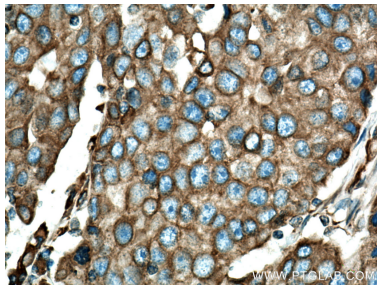
Selected Validation Data



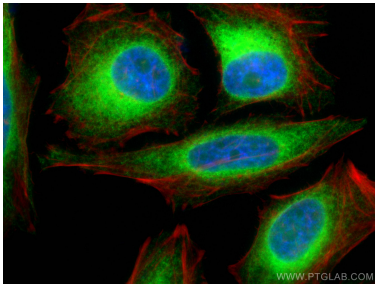
Various lysates were subjected to SDS PAGE followed by western blot with 11200-1-AP (BAP31 antibody) at dilution of 1:20000 incubated at room temperature for 1.5 hours.



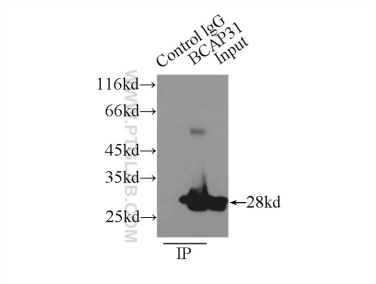
Immunohistochemical analysis of paraffin-embedded human breast cancer tissue slide using 11200-1-AP (BAP31 antibody) at dilution of 1:200 (under 10x lens). Heat mediated antigen retrieval with Tris-EDTA buffer (pH 9.0).



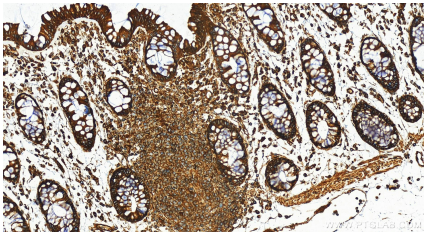
Immunohistochemical analysis of paraffin-embedded human breast cancer tissue slide using 11200-1-AP (BAP31 antibody) at dilution of 1:200 (under 40x lens). Heat mediated antigen retrieval with Tris-EDTA buffer (pH 9.0).



Immunofluorescent analysis of (4% PFA) fixed HeLa cells using BAP31 antibody (11200-1-AP) at dilution of 1:0 and Coralite®488-Conjugated AffiniPure Goat Anti-Rabbit IgG(H+L), phalloidine stains F-actin (red).



IP result of anti-BAP31 (IP:11200-1-AP, 3ug; Detection:11200-1-AP 1:1000) with A431 cells lysate 3300ug.



Immunohistochemical analysis of paraffin-embedded human colon tissue slide using 11200-1-AP (BAP31 antibody) at dilution of 1:4000 (under 20x lens). Heat mediated antigen retrieval with Tris-EDTA buffer (pH 9.0).