

For Research Use Only

# SRP9 Polyclonal antibody

Catalog Number: 11195-1-AP

Featured Product

10 Publications



## Basic Information

**Catalog Number:**

11195-1-AP

**Size:**

900 µg/ml

**Source:**

Rabbit

**Isotype:**

IgG

**Immunogen Catalog Number:**

AG1683

**GenBank Accession Number:**

BC015094

**GeneID (NCBI):**

6726

**UNIPROT ID:**

P49458

**Full Name:**

signal recognition particle 9kDa

**Calculated MW:**

10 kDa

**Observed MW:**

10 kDa

**Purification Method:**

Antigen affinity purification

**Recommended Dilutions:**

WB 1:500-1:2000

IP 0.5-4.0 µg for 1.0-3.0 mg of total protein lysate

IHC 1:20-1:200

## Applications

**Tested Applications:**

IHC, IP, WB, ELISA

**Cited Applications:**

WB, IP, IHC

**Species Specificity:**

human, mouse, rat

**Cited Species:**

human, mouse

**Note-IHC: suggested antigen retrieval with TE buffer pH 9.0; (\*) Alternatively, antigen retrieval may be performed with citrate buffer pH 6.0**

**Positive Controls:**

**WB:** HepG2 cells, A2780 cells, HeLa cells, MCF-7 cells, SKOV-3 cells, mouse colon tissue, HuH-7 cells

**IP:** HepG2 cells,

**IHC:** human prostate cancer tissue,

## Background Information

Signal recognition particle 9(SRP9) is component of the signal recognition particle (SRP), which is a ribonucleoprotein complex that mediates the targeting of proteins to the rough endoplasmic reticulum (ER). SRP9 form a heterodimer with SRP14, which involves in arrest of the elongation of the nascent chains during targeting to ensure efficient translocation of the preprotein.

## Notable Publications

Author	Pubmed ID	Journal	Application
Evan P Booy	30247708	Nucleic Acids Res	WB,IP
Evan P Booy	33410401	J Biol Chem	WB
Gizem Erdoğan	34727289	Mol Biol Rep	WB

## Storage

**Storage:**

Store at -20°C. Stable for one year after shipment.

**Storage Buffer:**

PBS with 0.02% sodium azide and 50% glycerol pH 7.3.

Aliquoting is unnecessary for -20°C storage

For technical support and original validation data for this product please contact:

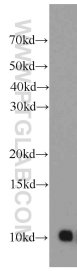
T: 4006900926

E: Proteintech-CN@ptglab.com

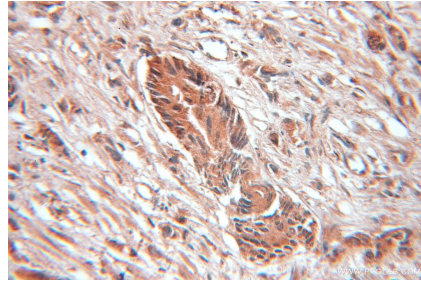
W: ptgcn.com

**This product is exclusively available under Proteintech Group brand and is not available to purchase from any other manufacturer.**

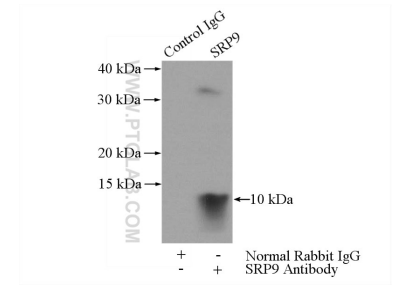
## Selected Validation Data



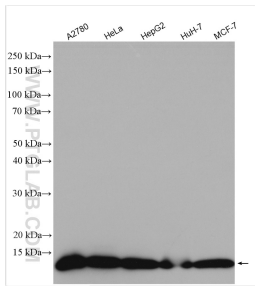
HepG2 cells were subjected to SDS PAGE followed by western blot with 11195-1-AP (SRP9 antibody) at dilution of 1:1000 incubated at room temperature for 1.5 hours.



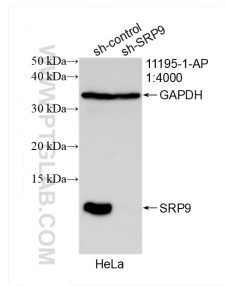
Immunohistochemical analysis of paraffin-embedded human prostate cancer using 11195-1-AP (SRP9 antibody) at dilution of 1:100 (under 10x lens).



IP result of anti-SRP9 (IP:11195-1-AP, 3ug; Detection:11195-1-AP 1:500) with HepG2 cells lysate 3600ug.



Various lysates were subjected to SDS PAGE followed by western blot with 11195-1-AP (SRP9 antibody) at dilution of 1:3000 incubated at room temperature for 1.5 hours.



WB result of SRP9 antibody (11195-1-AP; 1:4000; incubated at room temperature for 1.5 hours) with sh-Control and sh-SRP9 transfected HeLa cells.