

CPNE3 Polyclonal antibody

 Catalog Number: 11186-1-AP 1 Publications

Basic Information

Catalog Number:

11186-1-AP

Size:

253 µg/ml

Source:

Rabbit

Isotype:

IgG

Immunogen Catalog Number:

AG1634

GenBank Accession Number:

BC036242

GeneID (NCBI):

8895

UNIPROT ID:

O75131

Full Name:

copine III

Calculated MW:

60 kDa

Observed MW:

60 kDa

Purification Method:

Antigen affinity purification

Recommended Dilutions:

WB 1:500-1:1000

IP 0.5-4.0 µg for 1.0-3.0 mg of total protein lysate

IHC 1:20-1:200

Applications

Tested Applications:

IHC, IP, WB, ELISA

Cited Applications:

WB, IHC

Species Specificity:

human, mouse, rat

Cited Species:

human

Note-IHC: suggested antigen retrieval with TE buffer pH 9.0; (*) Alternatively, antigen retrieval may be performed with citrate buffer pH 6.0

Positive Controls:

WB : Y79 cells,

IP : HepG2 cells,

IHC : human prostate cancer tissue,

Background Information

Copines are a family of evolutionarily conserved calcium-dependent phospholipid-binding proteins (PMID: 9430674). They contain two Ca²⁺- and phospholipid-binding domains known as C2 domains. Copines are potentially involved in regulating membrane trafficking and in protein-protein interactions.

Notable Publications

Author	Pubmed ID	Journal	Application
Bo Sun	30078189	J Cell Physiol	WB, IHC

Storage

Storage:

Store at -20°C. Stable for one year after shipment.

Storage Buffer:

PBS with 0.02% sodium azide and 50% glycerol pH 7.3.

Aliquoting is unnecessary for -20°C storage

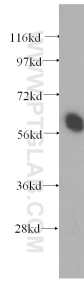
For technical support and original validation data for this product please contact:

T: 4006900926

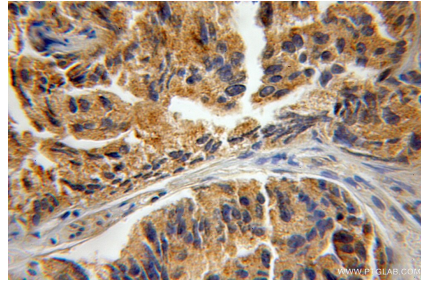
E: Proteintech-CN@ptglab.comW: ptgcn.com

This product is exclusively available under Proteintech Group brand and is not available to purchase from any other manufacturer.

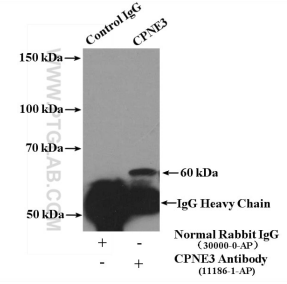
Selected Validation Data



Y79 cells were subjected to SDS PAGE followed by western blot with 11186-1-AP (CPNE3 antibody) at dilution of 1:400 incubated at room temperature for 1.5 hours.



Immunohistochemical analysis of paraffin-embedded human prostate cancer using 11186-1-AP (CPNE3 antibody) at dilution of 1:50 (under 10x lens).



IP result of anti-CPNE3 (IP:11186-1-AP, 4ug; Detection:11186-1-AP 1:300) with HepG2 cells lysate 3400ug.