

For Research Use Only

# PSMA1 Polyclonal antibody

Catalog Number: 11175-1-AP **1 Publications**



## Basic Information

<b>Catalog Number:</b> 11175-1-AP	<b>GenBank Accession Number:</b> BC015105	<b>Purification Method:</b> Antigen affinity purification
<b>Size:</b> 200 µg/ml	<b>GeneID (NCBI):</b> 5682	<b>Recommended Dilutions:</b> WB 1:500-1:1000 IHC 1:20-1:200 IF 1:10-1:100
<b>Source:</b> Rabbit	<b>UNIPROT ID:</b> P25786	
<b>Isotype:</b> IgG	<b>Full Name:</b> proteasome (prosome, macropain) subunit, alpha type, 1	
<b>Immunogen Catalog Number:</b> AG1660	<b>Calculated MW:</b> 30 kDa	
	<b>Observed MW:</b> 29-33 kDa	

## Applications

<b>Tested Applications:</b> IF/ICC, IHC, WB, ELISA	<b>Positive Controls:</b> WB: COLO 320 cells, HeLa cells, mouse kidney tissue, PC-3 cells IHC: human colon cancer tissue, IF: PC-3 cells,
<b>Cited Applications:</b> WB	
<b>Species Specificity:</b> human, mouse, rat	
<b>Cited Species:</b> rat	
<b>Note-IHC: suggested antigen retrieval with TE buffer pH 9.0; (*) Alternatively, antigen retrieval may be performed with citrate buffer pH 6.0</b>	

## Background Information

PSMA1(Proteasome subunit alpha type-1) is also named as HC2, NU, PROS30, PSC2 and belongs to the peptidase T1A family. The proteasome is a multicatalytic proteinase complex which is characterized by its ability to cleave peptides with Arg, Phe, Tyr, Leu, and Glu adjacent to the leaving group at neutral or slightly basic pH. It is induced in breast cancer tissue and up-regulated in liver tumor tissues (PMID:17127214;16317774;17004105).

## Notable Publications

Author	Pubmed ID	Journal	Application
Wenjuan Zhang	33919255	Int J Mol Sci	WB

## Storage

**Storage:**  
Store at -20°C. Stable for one year after shipment.  
**Storage Buffer:**  
PBS with 0.02% sodium azide and 50% glycerol pH 7.3.  
Aliquoting is unnecessary for -20°C storage

For technical support and original validation data for this product please contact:

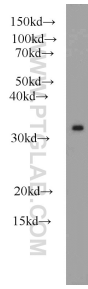
T: 4006900926

E: Proteintech-CN@ptglab.com

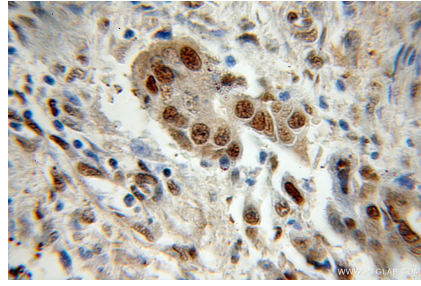
W: ptgcn.com

**This product is exclusively available under Proteintech Group brand and is not available to purchase from any other manufacturer.**

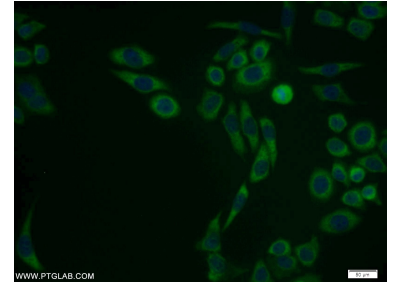
## Selected Validation Data



COLO 320 cells were subjected to SDS PAGE followed by western blot with 11175-1-AP (PSMA1 antibody) at dilution of 1:600 incubated at room temperature for 1.5 hours.



Immunohistochemical analysis of paraffin-embedded human colon cancer using 11175-1-AP (PSMA1 antibody) at dilution of 1:50 (under 10x lens).



Immunofluorescent analysis of PC-3 cells using 11175-1-AP (PSMA1 antibody) at dilution of 1:25 and Alexa Fluor 488-conjugated AffiniPure Goat Anti-Rabbit IgG(H+L).