

For Research Use Only

FKBP8 Polyclonal antibody

Catalog Number: 11173-1-AP

Featured Product

5 Publications



Basic Information

Catalog Number:

11173-1-AP

Size:

300 µg/ml

Source:

Rabbit

Isotype:

IgG

Immunogen Catalog Number:

AG1649

GenBank Accession Number:

BC009966

GeneID (NCBI):

23770

UNIPROT ID:

Q14318

Full Name:

FK506 binding protein 8, 38kDa

Calculated MW:

45 kDa

Observed MW:

53 kDa

Purification Method:

Antigen affinity purification

Recommended Dilutions:

WB 1:500-1:1000

IP 0.5-4.0 µg for 1.0-3.0 mg of total protein lysate

IF 1:10-1:100

Applications

Tested Applications:

IF/ICC, IP, WB, ELISA

Cited Applications:

WB, IP, IF

Species Specificity:

human, mouse

Cited Species:

human, rat, mouse

Positive Controls:

WB: HEK-293 cells, mouse liver tissue, SH-SY5Y cells, mouse brain tissue, mouse pancreas tissue, Jurkat cells, HeLa cells

IP: HeLa cells,

IF: SH-SY5Y cells,

Background Information

FK506 binding protein 8 (FKBP8), is a member of the immunophilin protein family, which play a role in immunoregulation and basic cellular processes involving protein folding and trafficking. FKBP8 does not seem to have PPIase/rotamase activity, which is different from other members of this family. The active form of FKBP8 may play a role in the regulation of apoptosis. FKBP8 has 3 isoforms produced by alternative splicing.

Notable Publications

Author	Pubmed ID	Journal	Application
Suli Lv	36185457	Front Bioeng Biotechnol	
Girish R Mali	29916806	Elife	WB, IP
Xiao Yang	38291901	Mol Hum Reprod	WB

Storage

Storage:

Store at -20°C. Stable for one year after shipment.

Storage Buffer:

PBS with 0.02% sodium azide and 50% glycerol pH 7.3.

Aliquoting is unnecessary for -20°C storage

For technical support and original validation data for this product please contact:

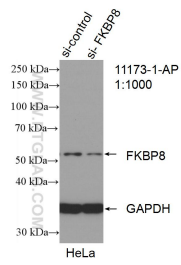
T: 4006900926

E: Proteintech-CN@ptglab.com

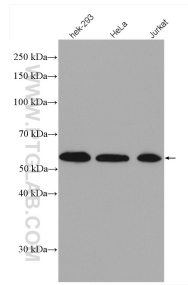
W: ptgcn.com

This product is exclusively available under Proteintech Group brand and is not available to purchase from any other manufacturer.

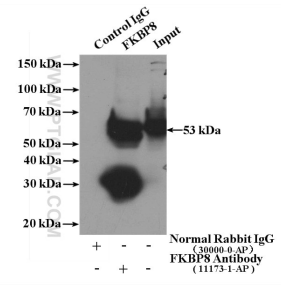
Selected Validation Data



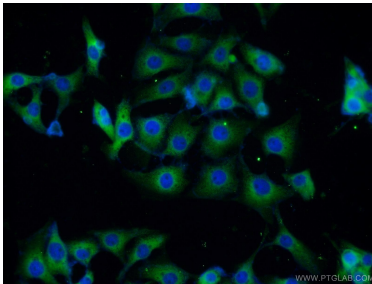
WB result of FKBP8 antibody (11173-1-AP; 1:1000; incubated at room temperature for 1.5 hours) with sh-Control and sh-FKBP8 transfected HeLa cells.



Various lysates were subjected to SDS PAGE followed by western blot with 11173-1-AP (FKBP8 antibody) at dilution of 1:500 incubated at room temperature for 1.5 hours.



IP result of anti-FKBP8 (IP:11173-1-AP, 4ug; Detection:11173-1-AP 1:500) with HeLa cells lysate 3200ug.



Immunofluorescent analysis of SH-SY5Y cells using 11173-1-AP (FKBP8 antibody) at dilution of 1:25 and Alexa Fluor 488-conjugated AffiniPure Goat Anti-Rabbit IgG(H+L).