

For Research Use Only

EAF2 Polyclonal antibody

Catalog Number: 11172-1-AP **1 Publications**



Basic Information

Catalog Number: 11172-1-AP	GenBank Accession Number: BC014209	Purification Method: Antigen affinity purification
Size: 750 µg/ml	GeneID (NCBI): 55840	Recommended Dilutions: WB 1:500-1:2000 IHC 1:50-1:500 IF 1:20-1:200
Source: Rabbit	UNIPROT ID: Q96CJ1	
Isotype: IgG	Full Name: ELL associated factor 2	
Immunogen Catalog Number: AG1637	Calculated MW: 42 kDa	
	Observed MW: 45 kDa	

Applications

Tested Applications: IF/ICC, IHC, WB, ELISA	Positive Controls: WB : HEK-293 cells, mouse kidney tissue IHC : human breast cancer tissue, IF : HepG2 cells,
Cited Applications: WB, IP	
Species Specificity: human, mouse, rat	
Cited Species: mouse	
Note-IHC: suggested antigen retrieval with TE buffer pH 9.0; (*) Alternatively, antigen retrieval may be performed with citrate buffer pH 6.0	

Background Information

ELL associated factor 1 and ELL associated factor 2 (EAF1/2 factors) are reported to play important roles in tumor suppression and embryogenesis. The tumor suppressor EAF2 is regulated by androgen signaling and associated with prostate cancer. Eaf factors have been revealed to modulate mesoderm and neural patterning by inhibiting canonical Wnt signaling, and high activity of canonical Wnt/β-catenin is revealed in eaf morphants (PMID: 23364330). Catalog# 11172-1-AP is a rabbit polyclonal antibody raised against the full-length of human EAF2.

Notable Publications

Author	Pubmed ID	Journal	Application
Jiawei Zhao	38218188	Cell	WB,IP

Storage

Storage:
Store at -20°C. Stable for one year after shipment.
Storage Buffer:
PBS with 0.02% sodium azide and 50% glycerol pH 7.3.
Aliquoting is unnecessary for -20°C storage

For technical support and original validation data for this product please contact:

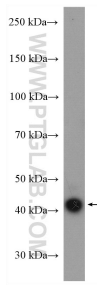
T: 4006900926

E: Proteintech-CN@ptglab.com

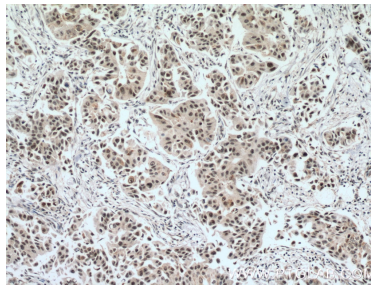
W: ptgcn.com

This product is exclusively available under Proteintech Group brand and is not available to purchase from any other manufacturer.

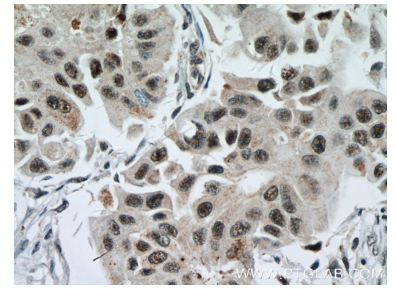
Selected Validation Data



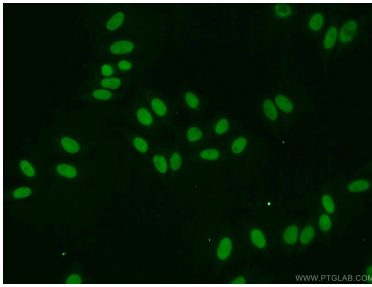
HEK-293 cells were subjected to SDS PAGE followed by western blot with 11172-1-AP (EAF2 antibody) at dilution of 1:1000 incubated at room temperature for 1.5 hours.



Immunohistochemical analysis of paraffin-embedded human breast cancer tissue slide using 11172-1-AP (EAF2 antibody) at dilution of 1:200 (under 10x lens. Heat mediated antigen retrieval with Tris-EDTA buffer (pH 9.0).



Immunohistochemical analysis of paraffin-embedded human breast cancer tissue slide using 11172-1-AP (EAF2 antibody) at dilution of 1:200 (under 40x lens. Heat mediated antigen retrieval with Tris-EDTA buffer (pH 9.0).



Immunofluorescent analysis of HepG2 cells using 11172-1-AP (EAF2 antibody) at dilution of 1:50 and Alexa Fluor 488-conjugated AffiniPure Goat Anti-Rabbit IgG(H+L).