

For Research Use Only

EIF2S1 Polyclonal antibody

Catalog Number: 11170-1-AP

Featured Product

95 Publications



Basic Information

Catalog Number:

11170-1-AP

Concentration:

300 ug/ml

Source:

Rabbit

Isotype:

IgG

Immunogen Catalog Number:

AG1645

GenBank Accession Number:

BC002513

GeneID (NCBI):

1965

UNIPROT ID:

P05198

Full Name:

eukaryotic translation initiation factor 2, subunit 1 alpha, 35kDa

Calculated MW:

36 kDa

Observed MW:

36 kDa

Purification Method:

Antigen affinity purification

Recommended Dilutions:

WB 1:5000-1:50000

IP 0.5-4.0 ug for 1.0-3.0 mg of total protein lysate

IHC 1:50-1:500

IF/ICC 1:50-1:500

Applications

Tested Applications:

WB, IHC, IF/ICC, FC (Intra), IP, ELISA

Cited Applications:

WB, IHC, IF, IP

Species Specificity:

human, mouse, rat

Cited Species:

human, mouse, rat, pig, chicken

Positive Controls:

WB : MCF-7 cells, HepG2 cells, Jurkat cells, NIH/3T3 cells, HSC-T6 cells, PC-12 cells, mouse brain tissue, rat brain tissue

IP : HepG2 cells,

IHC : rat colon tissue,

IF/ICC : HepG2 cells,

Note-IHC: suggested antigen retrieval with TE buffer pH 9.0; (*) Alternatively, antigen retrieval may be performed with citrate buffer pH 6.0

Background Information

EIF2S1 is one subunit of the translation initiation factor EIF2, which catalyzes the first regulated step of protein synthesis initiation, promoting the binding of the initiator tRNA to 40S ribosomal subunits. This complex binds to a 40S ribosomal subunit, followed by mRNA binding to form a 43S preinitiation complex. Junction of the 60S ribosomal subunit to form the 80S initiation complex is preceded by hydrolysis of the GTP bound to eIF-2 and release of an eIF-2-GDP binary complex. In order for eIF-2 to recycle and catalyze another round of initiation, the GDP bound to eIF-2 must exchange with GTP by way of a reaction catalyzed by eIF-2B. EIF2A (Gene ID: 83939) and EIF2S1 (Gene ID: 1965) share the EIF2A symbol/alias in common. EIF2S1 is the alpha subunit of the eIF2 translation initiation complex. Although both of these proteins function in binding initiator tRNA to the 40S ribosomal subunit, the EIF2A protein does so in a codon-dependent manner, whereas eIF2 complex requires GTP.

Notable Publications

Author	Pubmed ID	Journal	Application
Yu Sun	34562065	J Cell Mol Med	WB
Liguo Yang	32943607	Cell Death Dis	WB
Tongtong Liu	34530836	J Neuroinflammation	WB

Storage

Storage:

Store at -20°C. Stable for one year after shipment.

Storage Buffer:

PBS with 0.02% sodium azide and 50% glycerol, pH7.3

Aliquoting is unnecessary for -20°C storage

For technical support and original validation data for this product please contact:

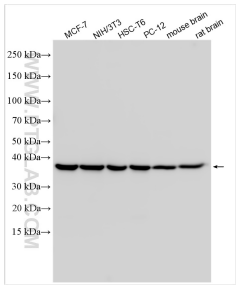
T: 4006900926

E: Proteintech-CN@ptglab.com

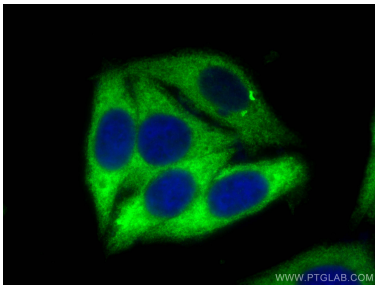
W: ptgcn.com

This product is exclusively available under Proteintech Group brand and is not available to purchase from any other manufacturer.

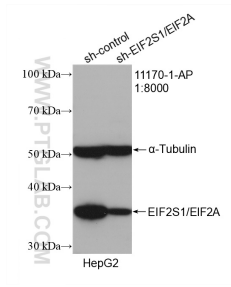
Selected Validation Data



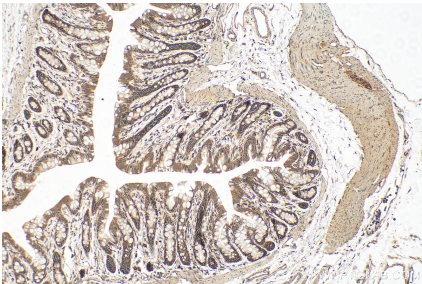
Various lysates were subjected to SDS PAGE followed by western blot with 11170-1-AP (EIF2S1 antibody) at dilution of 1:15000 incubated at room temperature for 1.5 hours.



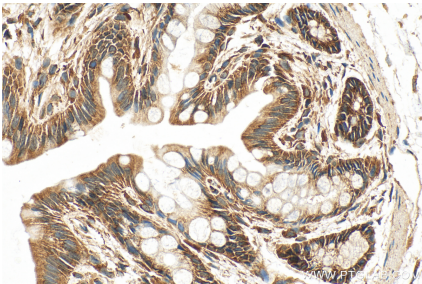
Immunofluorescent analysis of (-20°C Methanol) fixed HepG2 cells using EIF2S1/EIF2A antibody (11170-1-AP) at dilution of 1:200 and CoraLite®488-Conjugated AffiniPure Goat Anti-Rabbit IgG(H+L).



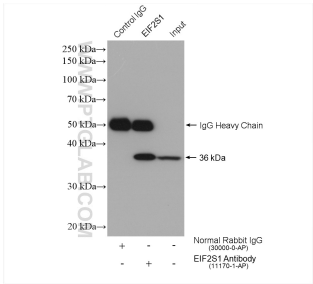
WB result of EIF2S1/EIF2A antibody (11170-1-AP; 1:8000; incubated at room temperature for 1.5 hours) with sh-Control and sh-EIF2S1/EIF2A transfected HepG2 cells.



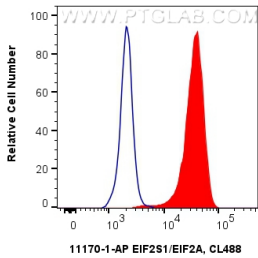
Immunohistochemical analysis of paraffin-embedded rat colon tissue slide using 11170-1-AP (EIF2S1/EIF2A antibody) at dilution of 1:200 (under 10x lens). Heat mediated antigen retrieval with Tris-EDTA buffer (pH 9.0).



Immunohistochemical analysis of paraffin-embedded rat colon tissue slide using 11170-1-AP (EIF2S1/EIF2A antibody) at dilution of 1:200 (under 40x lens). Heat mediated antigen retrieval with Tris-EDTA buffer (pH 9.0).



IP result of anti-EIF2S1/EIF2A (IP:11170-1-AP, 4ug; Detection:11170-1-AP 1:8000) with HepG2 cells lysate 1640 ug.



1X10⁶ MCF-7 cells were intracellularly stained with 0.4 ug Anti-Human EIF2S1/EIF2A (11170-1-AP) and CoraLite®488-Conjugated AffiniPure Goat Anti-Rabbit IgG(H+L) at dilution 1:1000 (red), or 0.4 ug Rabbit IgG control Rabbit PolyAb (30000-O-AP, Clone:) (blue). Cells were fixed with 4% PFA and permeabilized with Flow Cytometry Perm Buffer (PF00011-C).