

For Research Use Only

# IDI1 Polyclonal antibody

Catalog Number: 11166-2-AP

7 Publications



## Basic Information

### Catalog Number:

11166-2-AP

### Size:

500 µg/ml

### Source:

Rabbit

### Isotype:

IgG

### Immunogen Catalog Number:

AG1636

### GenBank Accession Number:

BC019227

### GeneID (NCBI):

3422

### UNIPROT ID:

Q13907

### Full Name:

isopentenyl-diphosphate delta isomerase 1

### Calculated MW:

31 kDa

### Observed MW:

28 kDa

### Purification Method:

Antigen affinity purification

### Recommended Dilutions:

WB 1:1000-1:3000

IP 0.5-4.0 µg for 1.0-3.0 mg of total protein lysate

IHC 1:4000-1:16000

## Applications

### Tested Applications:

WB, IP, IHC, ELISA

### Cited Applications:

WB

### Species Specificity:

human, mouse, rat

### Cited Species:

human, mouse

**Note-IHC: suggested antigen retrieval with TE buffer pH 9.0; (\*) Alternatively, antigen retrieval may be performed with citrate buffer pH 6.0**

### Positive Controls:

**WB** : L02 cells, human liver tissue, mouse liver tissue

**IP** : mouse liver tissue,

**IHC** : human prostate cancer tissue, human colon cancer tissue, human liver tissue

## Background Information

IDI1 (Isopentenyl-diphosphate Delta-isomerase 1) is a peroxisomally-localized enzyme that catalyzes the interconversion of isopentenyl diphosphate (IPP) to its highly electrophilic isomer, dimethylallyl diphosphate (DMAPP). It belongs to the IPP isomerase type 1 family. This protein has 2 isoforms produced by alternative splicing with the molecular weight of 26 kDa and 32 kDa.

## Notable Publications

Author	Pubmed ID	Journal	Application
King Frank W FW	19789631	PLoS One	WB
Audrey Basque	36279966	Toxicol In Vitro	WB
Henrick Horita	29786648	Proteomes	WB

## Storage

### Storage:

Store at -20°C. Stable for one year after shipment.

### Storage Buffer:

PBS with 0.02% sodium azide and 50% glycerol pH 7.3.

Aliquoting is unnecessary for -20°C storage

For technical support and original validation data for this product please contact:

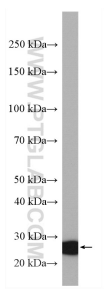
T: 4006900926

E: [Proteintech-CN@ptglab.com](mailto:Proteintech-CN@ptglab.com)

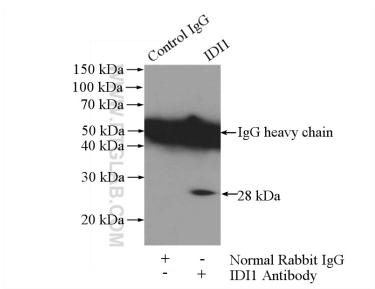
W: [ptgcn.com](http://ptgcn.com)

**This product is exclusively available under Proteintech Group brand and is not available to purchase from any other manufacturer.**

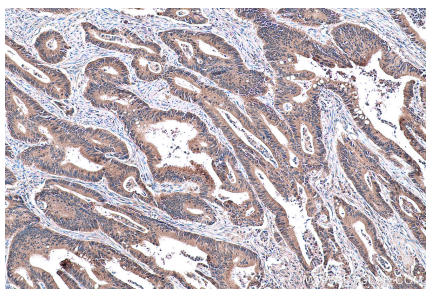
Selected Validation Data



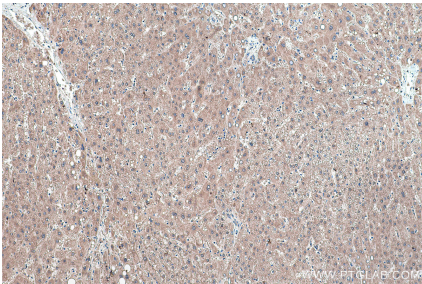
L02 cells were subjected to SDS PAGE followed by western blot with 11166-2-AP (ID11 antibody) at dilution of 1:2000 incubated at room temperature for 1.5 hours.



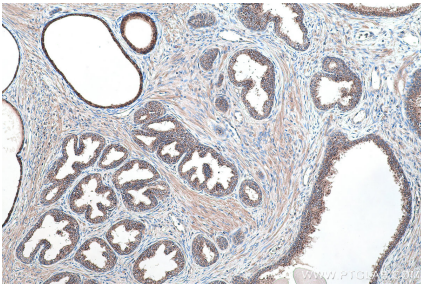
IP result of anti-ID11 (IP:11166-2-AP, 4ug; Detection:11166-2-AP 1:300) with mouse liver tissue lysate 4000ug.



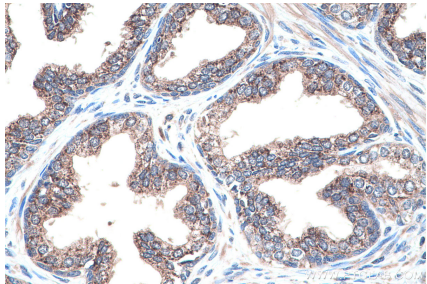
Immunohistochemical analysis of paraffin-embedded human colon cancer tissue slide using 11166-2-AP (ID11 antibody) at dilution of 1:8000 (under 10x lens). Heat mediated antigen retrieval with Tris-EDTA buffer (pH 9.0).



Immunohistochemical analysis of paraffin-embedded human liver tissue slide using 11166-2-AP (ID11 antibody) at dilution of 1:8000 (under 10x lens). Heat mediated antigen retrieval with Tris-EDTA buffer (pH 9.0).



Immunohistochemical analysis of paraffin-embedded human prostate cancer tissue slide using 11166-2-AP (ID11 antibody) at dilution of 1:8000 (under 10x lens). Heat mediated antigen retrieval with Tris-EDTA buffer (pH 9.0).



Immunohistochemical analysis of paraffin-embedded human prostate cancer tissue slide using 11166-2-AP (ID11 antibody) at dilution of 1:8000 (under 40x lens). Heat mediated antigen retrieval with Tris-EDTA buffer (pH 9.0).