

SMARCD2 Polyclonal antibody

Catalog Number: 11156-1-AP

Basic Information

Catalog Number:

11156-1-AP

Size:

600 µg/ml

Source:

Rabbit

Isotype:

IgG

Immunogen Catalog Number:

AG1630

GenBank Accession Number:

BC018953

GeneID (NCBI):

6603

UNIPROT ID:

Q92925

Full Name:

SWI/SNF related, matrix associated,
actin dependent regulator of
chromatin, subfamily d, member 2

Calculated MW:

52 kDa

Observed MW:

52 kDa

Purification Method:

Antigen affinity purification

Recommended Dilutions:

WB 1:500-1:1000

IHC 1:500-1:2000

Applications

Tested Applications:

WB, IHC, ELISA

Species Specificity:

human, mouse, rat

**Note-IHC: suggested antigen retrieval with
TE buffer pH 9.0; (*) Alternatively, antigen
retrieval may be performed with citrate
buffer pH 6.0**

Positive Controls:

WB : RAW 264.7 cells, RAW264.7 cells

IHC : mouse spleen tissue, human cervical cancer
tissue, rat spleen tissue

Background Information

The SWI/SNF chromatin remodelling complexes are important regulators of transcription; they consist of large multisubunit assemblies containing either Brm or Brg1 as the catalytic ATPase subunit and a variable subset of approximately 10 Brg/Brm-associated factors (BAF) [PMID:20148946]. SMARCD2 is one of BAF60 proteins, which are found in most complexes, is thought to bridge interactions between transcription factors and SWI/SNF complexes. [PMID:9427560]

Storage

Storage:

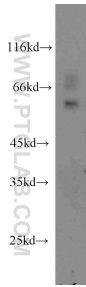
Store at -20°C. Stable for one year after shipment.

Storage Buffer:

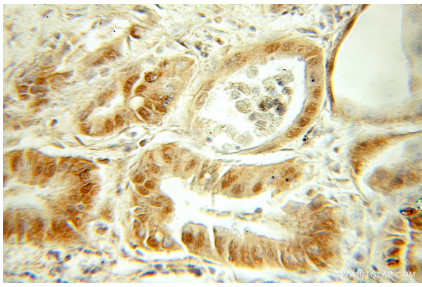
PBS with 0.02% sodium azide and 50% glycerol pH 7.3.

Aliquoting is unnecessary for -20°C storage

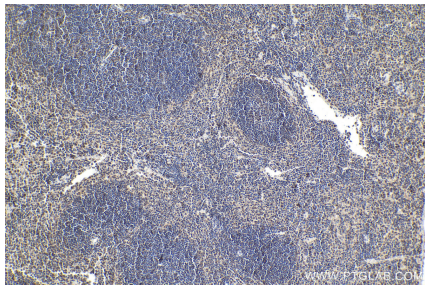
Selected Validation Data



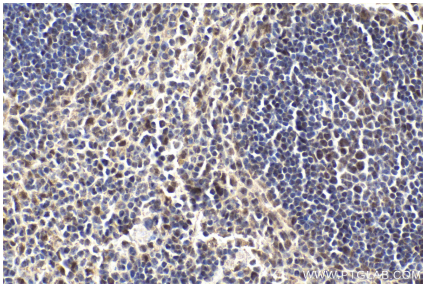
RAW264.7 cells were subjected to SDS PAGE followed by western blot with 11156-1-AP (SMARCD2 antibody) at dilution of 1:500 incubated at room temperature for 1.5 hours.



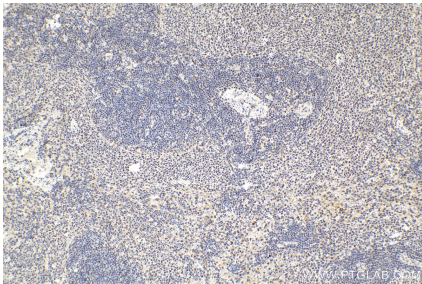
Immunohistochemical analysis of paraffin-embedded human cervical cancer using 11156-1-AP (SMARCD2 antibody) at dilution of 1:50 (under 10x lens).



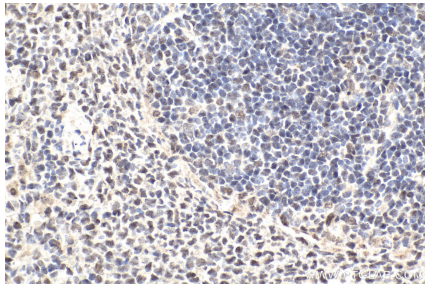
Immunohistochemical analysis of paraffin-embedded mouse spleen tissue slide using 11156-1-AP (SMARCD2 antibody) at dilution of 1:1000 (under 10x lens). Heat mediated antigen retrieval with Tris-EDTA buffer (pH 9.0).



Immunohistochemical analysis of paraffin-embedded mouse spleen tissue slide using 11156-1-AP (SMARCD2 antibody) at dilution of 1:1000 (under 40x lens). Heat mediated antigen retrieval with Tris-EDTA buffer (pH 9.0).



Immunohistochemical analysis of paraffin-embedded rat spleen tissue slide using 11156-1-AP (SMARCD2 antibody) at dilution of 1:1000 (under 10x lens). Heat mediated antigen retrieval with Tris-EDTA buffer (pH 9.0).



Immunohistochemical analysis of paraffin-embedded rat spleen tissue slide using 11156-1-AP (SMARCD2 antibody) at dilution of 1:1000 (under 40x lens). Heat mediated antigen retrieval with Tris-EDTA buffer (pH 9.0).