

# NTHL1 Polyclonal antibody

Catalog Number: 11154-1-AP

4 Publications

## Basic Information

## Catalog Number:

11154-1-AP

## Size:

800 µg/ml

## Source:

Rabbit

## Isotype:

IgG

## Immunogen Catalog Number:

AG1631

## GenBank Accession Number:

BC003014

## GeneID (NCBI):

4913

## UNIPROT ID:

P78549

## Full Name:

nth endonuclease III-like 1 (E. coli)

## Calculated MW:

34 aa, 3 kDa

## Observed MW:

34 kDa

## Purification Method:

Antigen affinity purification

## Recommended Dilutions:

WB 1:1000-1:4000

## Applications

## Tested Applications:

WB, ELISA

## Cited Applications:

WB, IP

## Species Specificity:

human, mouse, rat

## Cited Species:

human, rat

## Positive Controls:

WB : HEK-293 cells, human brain tissue, HeLa cells, K-562 cells, rat brain tissue

## Background Information

NTHL1, also named as Endonuclease III-like protein 1 or OCTS3, is a 312 amino acid protein, which belongs to the Nth/MutY family. NTHL1 localizes in the nucleus and is widely expressed with highest levels in heart and lowest levels in lung and liver. NTHL1 has both an apurinic and/or apyrimidinic endonuclease activity and a DNA N-glycosylase activity and incises damaged DNA at cytosines, thymines and guanines. NTHL1 acts on a damaged strand, 5' from the damaged site and is required for the repair of both oxidative DNA damage and spontaneous mutagenic lesions.

## Notable Publications

Author	Pubmed ID	Journal	Application
Elise Vickridge	36186110	NAR Cancer	WB, IP
Kremer Ted M TM	15450125	Respir Res	WB
Catherine E Aiken	30888848	FASEB J	WB

## Storage

## Storage:

Store at -20°C. Stable for one year after shipment.

## Storage Buffer:

PBS with 0.02% sodium azide and 50% glycerol pH 7.3.

Aliquoting is unnecessary for -20°C storage

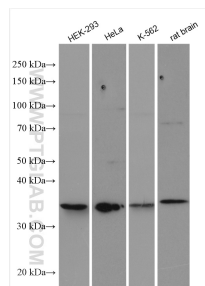
For technical support and original validation data for this product please contact:

T: 4006900926

E: [Proteintech-CN@ptglab.com](mailto:Proteintech-CN@ptglab.com)W: [ptgcn.com](http://ptgcn.com)

This product is exclusively available under Proteintech Group brand and is not available to purchase from any other manufacturer.

## Selected Validation Data



Various lysates were subjected to SDS PAGE followed by western blot with 11154-1-AP (NTHL1 antibody) at dilution of 1:2000 incubated at room temperature for 1.5 hours.