

For Research Use Only

SEC61G Polyclonal antibody

Catalog Number: 11147-2-AP

Featured Product

18 Publications



Basic Information

Catalog Number:

11147-2-AP

Size:

600 µg/ml

Source:

Rabbit

Isotype:

IgG

Immunogen Catalog Number:

AG1624

GenBank Accession Number:

BC009480

GeneID (NCBI):

23480

UNIPROT ID:

P60059

Full Name:

Sec61 gamma subunit

Calculated MW:

7.7 kDa

Observed MW:

7.7 kDa

Purification Method:

Antigen affinity purification

Recommended Dilutions:

WB 1:500-1:1000

IHC 1:20-1:200

Applications

Tested Applications:

IHC, WB, ELISA

Cited Applications:

IF, IHC, IP, WB

Species Specificity:

human, mouse, rat

Cited Species:

human, rat, mouse

Note-IHC: suggested antigen retrieval with TE buffer pH 9.0; (*) Alternatively, antigen retrieval may be performed with citrate buffer pH 6.0

Positive Controls:

WB : EC109 cells, HEK-293 cells, DC2.4 cells

IHC : human colon cancer tissue,

Background Information

SEC61G is a subunit of the SEC61 complex, which also contains alpha (SEC61A) and beta (SEC61B) subunits. The SEC61 complex is the central component of the protein translocation apparatus on the endoplasmic reticulum membrane. The gene of SEC61G maps to chromosome 7p11.2, and encodes a 68-amino acid single-pass membrane protein. This antibody can recognize endogenous SEC61G that migrates at a molecular mass of ~8 kDa.

Notable Publications

Author	Pubmed ID	Journal	Application
Luka Smalinskaitė	36261528	Nature	IP
Qunhao Zheng	34774014	BMC Cancer	WB
Qian Zhang	35720482	Oncol Lett	WB

Storage

Storage:

Store at -20°C. Stable for one year after shipment.

Storage Buffer:

PBS with 0.02% sodium azide and 50% glycerol pH 7.3.

Aliquoting is unnecessary for -20°C storage

For technical support and original validation data for this product please contact:

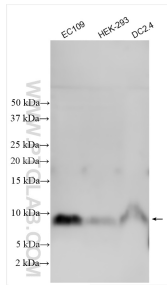
T: 4006900926

E: Proteintech-CN@ptglab.com

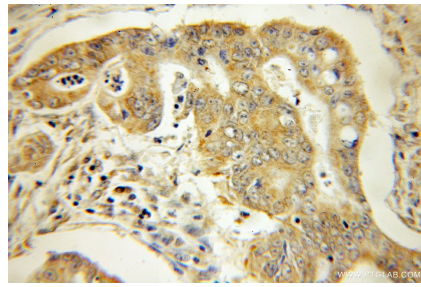
W: ptgcn.com

This product is exclusively available under Proteintech Group brand and is not available to purchase from any other manufacturer.

Selected Validation Data



Various lysates were subjected to SDS PAGE followed by western blot with 11147-2-AP (SEC61G antibody) at dilution of 1:500 incubated at room temperature for 1.5 hours.



Immunohistochemical analysis of paraffin-embedded human colon cancer using 11147-2-AP (SEC61G antibody) at dilution of 1:50 (under 10x lens).