

For Research Use Only

Gamma Catenin Polyclonal antibody, PBS Only

Catalog Number: 11146-1-PBS



Basic Information

Catalog Number:

11146-1-PBS

Size:

1 mg/ml

Source:

Rabbit

Isotype:

IgG

Immunogen Catalog Number:

AG1627

GenBank Accession Number:

BC011865

GeneID (NCBI):

3728

UNIPROT ID:

P14923

Full Name:

junction plakoglobin

Calculated MW:

82 kDa

Observed MW:

82 kDa

Purification Method:

Antigen affinity purification

Applications

Tested Applications:

WB, IHC, IP, Indirect ELISA

Species Specificity:

human, mouse, rat

Background Information

Plakoglobin (γ -catenin), a member of the Armadillo proteins, plays important roles in cell adhesion with α -catenin and β -catenin, is involved in Wnt signaling, and is translocated into the nucleus and binds LEF1. Plakoglobin is a major cytoplasmic component of both desmosomes and adherens junctions, and is the only known constituent common to submembranous plaques in both of these structures, which are located at the intercalated disc (ICD) of cardiomyocytes. Plakoglobin links cadherins to the actin cytoskeleton. Mutations in plakoglobin are associated with arrhythmogenic right ventricular dysplasia and Pemphigus vulgaris.

Storage

Storage:

Store at -80°C .

The product is shipped with ice packs. Upon receipt, store it immediately at -80°C

Storage Buffer:

PBS Only

For technical support and original validation data for this product please contact:

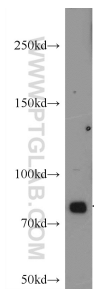
T: 4006900926

E: Proteintech-CN@ptglab.com

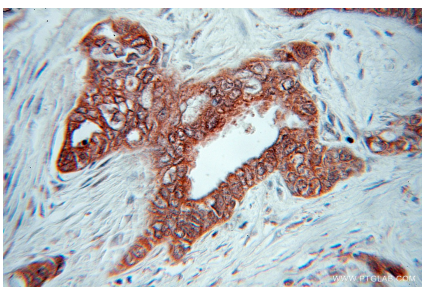
W: ptgcn.com

This product is exclusively available under Proteintech Group brand and is not available to purchase from any other manufacturer.

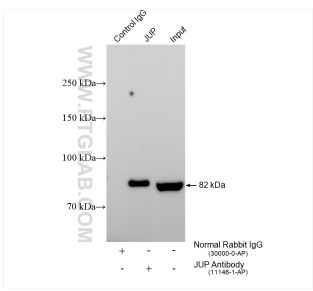
Selected Validation Data



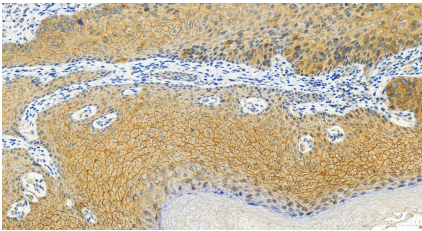
mouse heart tissue were subjected to SDS PAGE followed by western blot with 11146-1-AP (Plakoglobin/gamma catenin antibody at dilution of 1:1000 incubated at room temperature for 1.5 hours. This data was developed using the same antibody clone with 11146-1-PBS in a different storage buffer formulation.



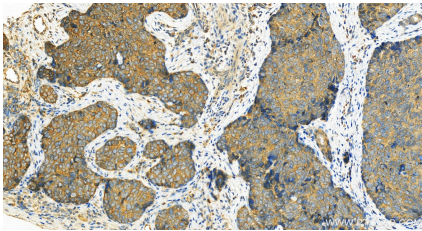
Immunohistochemical analysis of paraffin-embedded human pancreas cancer using 11146-1-AP (Plakoglobin/gamma catenin antibody) at dilution of 1:50 (under 10x lens). This data was developed using the same antibody clone with 11146-1-PBS in a different storage buffer formulation.



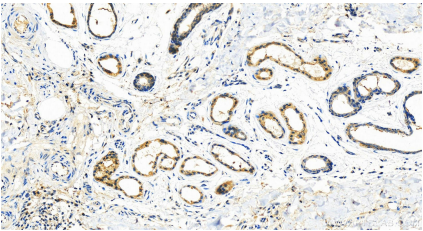
IP result of anti-Gamma Catenin (IP:11146-1-AP, 4ug; Detection:11146-1-AP 1:1000) with HT-29 cells lysate 1040 ug. This data was developed using the same antibody clone with 11146-1-PBS in a different storage buffer formulation.



Immunohistochemical analysis of paraffin-embedded human bowen disease slide using 11146-1-AP (Gamma Catenin antibody) at dilution of 1:200 (under 20x lens). Heat mediated antigen retrieval with Tris-EDTA buffer (pH 9.0). This data was developed using the same antibody clone with 11146-1-PBS in a different storage buffer formulation.



Immunohistochemical analysis of paraffin-embedded human bowen disease slide using 11146-1-AP (Gamma Catenin antibody) at dilution of 1:200 (under 20x lens). Heat mediated antigen retrieval with Tris-EDTA buffer (pH 9.0). This data was developed using the same antibody clone with 11146-1-PBS in a different storage buffer formulation.



Immunohistochemical analysis of paraffin-embedded human bowen disease slide using 11146-1-AP (Gamma Catenin antibody) at dilution of 1:200 (under 20x lens). Heat mediated antigen retrieval with Tris-EDTA buffer (pH 9.0). This data was developed using the same antibody clone with 11146-1-PBS in a different storage buffer formulation.