

For Research Use Only

# PCCB Polyclonal antibody

Catalog Number: 11139-1-AP

4 Publications



## Basic Information

Catalog Number:

11139-1-AP

Size:

500 µg/ml

Source:

Rabbit

Isotype:

IgG

Immunogen Catalog Number:

AG1608

GenBank Accession Number:

BC013768

GeneID (NCBI):

5096

UNIPROT ID:

P05166

Full Name:

propionyl Coenzyme A carboxylase,  
beta polypeptide

Calculated MW:

58 kDa

Observed MW:

58 kDa

Purification Method:

Antigen affinity purification

Recommended Dilutions:

WB 1:500-1:3000

IHC 1:100-1:400

IF-P 1:50-1:500

## Applications

Tested Applications:

WB, IHC, IF-P, ELISA

Cited Applications:

WB, IHC, IF

Species Specificity:

human, mouse, rat

Cited Species:

human, mouse

**Note-IHC: suggested antigen retrieval with  
TE buffer pH 9.0; (\*) Alternatively, antigen  
retrieval may be performed with citrate  
buffer pH 6.0**

Positive Controls:

WB : mouse heart tissue, rat heart tissue

IHC : human kidney tissue, human heart tissue

IF-P : human kidney tissue,

## Background Information

### Notable Publications

Author	Pubmed ID	Journal	Application
Satabdi Nandi	32092784	Eur J Immunol	WB
Jie Hou	39190351	Proc Natl Acad Sci U S A	WB,IF
Kai Xu	38849030	Am J Pathol	IHC

## Storage

Storage:

Store at -20°C. Stable for one year after shipment.

Storage Buffer:

PBS with 0.02% sodium azide and 50% glycerol pH 7.3.

Aliquoting is unnecessary for -20°C storage

For technical support and original validation data for this product please contact:

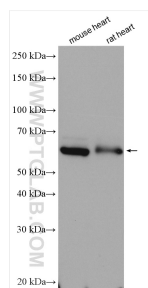
T: 4006900926

E: [Proteintech-CN@ptglab.com](mailto:Proteintech-CN@ptglab.com)

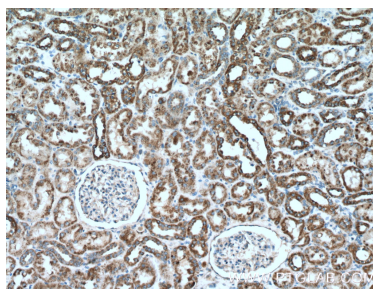
W: [ptgcn.com](http://ptgcn.com)

**This product is exclusively available under Proteintech Group brand and is not available to purchase from any other manufacturer.**

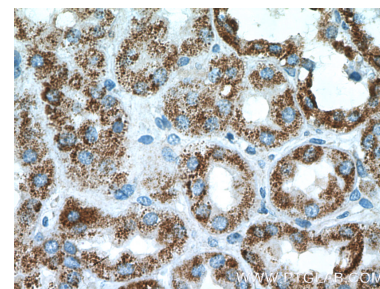
## Selected Validation Data



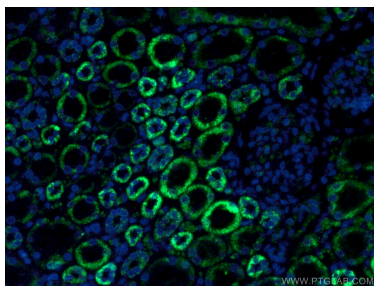
Various lysates were subjected to SDS PAGE followed by western blot with 11139-1-AP (PCCB antibody) at dilution of 1:1500 incubated at room temperature for 1.5 hours.



Immunohistochemical analysis of paraffin-embedded human kidney tissue slide using 11139-1-AP (PCCB Antibody) at dilution of 1:200 (under 10x lens).



Immunohistochemical analysis of paraffin-embedded human kidney tissue slide using 11139-1-AP (PCCB Antibody) at dilution of 1:200 (under 40x lens).



Immunofluorescent analysis of (4% PFA) fixed human kidney tissue using 11139-1-AP (PCCB antibody) at dilution of 1:50 and Alexa Fluor 488-conjugated Goat Anti-Rabbit IgG(H+L).