

For Research Use Only

TIMM10 Polyclonal antibody

Catalog Number: 11124-2-AP **3 Publications**



Basic Information

Catalog Number:

11124-2-AP

Size:

600 µg/ml

Source:

Rabbit

Isotype:

IgG

Immunogen Catalog Number:

AG1615

GenBank Accession Number:

BC032133

GeneID (NCBI):

26519

UNIPROT ID:

P62072

Full Name:

translocase of inner mitochondrial membrane 10 homolog (yeast)

Calculated MW:

10 kDa

Observed MW:

10 kDa

Purification Method:

Antigen affinity purification

Recommended Dilutions:

WB 1:500-1:2000

IHC 1:20-1:200

Applications

Tested Applications:

IHC, WB, ELISA

Cited Applications:

WB

Species Specificity:

human, mouse, rat

Cited Species:

human, rat

Note-IHC: suggested antigen retrieval with TE buffer pH 9.0; (*) Alternatively, antigen retrieval may be performed with citrate buffer pH 6.0

Positive Controls:

WB : human heart tissue, human liver tissue

IHC : human colon cancer tissue,

Background Information

Notable Publications

Author	Pubmed ID	Journal	Application
Rashim Pal Singh	32416059	Cell Stem Cell	WB
Wei Ou	33964586	Redox Biol	WB
Rui Huang	24817082	PLoS One	WB

Storage

Storage:

Store at -20°C. Stable for one year after shipment.

Storage Buffer:

PBS with 0.02% sodium azide and 50% glycerol pH 7.3.

Aliquoting is unnecessary for -20°C storage

For technical support and original validation data for this product please contact:

T: 4006900926

E: Proteintech-CN@ptglab.com

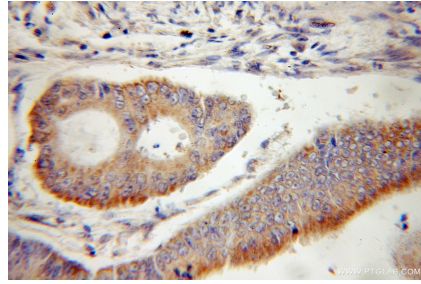
W: ptgcn.com

This product is exclusively available under Proteintech Group brand and is not available to purchase from any other manufacturer.

Selected Validation Data



human heart tissue were subjected to SDS PAGE followed by western blot with 11124-2-AP (TIMM10 antibody) at dilution of 1:500 incubated at room temperature for 1.5 hours.



Immunohistochemical analysis of paraffin-embedded human colon cancer using 11124-2-AP (TIMM10 antibody) at dilution of 1:50 (under 25x lens).