

For Research Use Only

DDX3 Polyclonal antibody

Catalog Number: 11115-1-AP

Featured Product

32 Publications



Basic Information

Catalog Number:

11115-1-AP

Concentration:

400 ug/ml

Source:

Rabbit

Isotype:

IgG

Immunogen Catalog Number:

AG1614

GenBank Accession Number:

BC011819

GeneID (NCBI):

1654

UNIPROT ID:

O00571

Full Name:

DEAD (Asp-Glu-Ala-Asp) box polypeptide 3, X-linked

Calculated MW:

73 kDa

Observed MW:

73 kDa

Purification Method:

Antigen affinity purification

Recommended Dilutions:

WB 1:1000-1:8000

IP 0.5-4.0 ug for 1.0-3.0 mg of total protein lysate

IHC 1:50-1:500

IF/ICC 1:200-1:800

Applications

Tested Applications:

WB, IHC, IF/ICC, FC (Intra), IP, ELISA

Cited Applications:

WB, IHC, IF, CoIP, RIP

Species Specificity:

human, mouse, rat

Cited Species:

human, mouse, rat

Note-IHC: suggested antigen retrieval with TE buffer pH 9.0; (*) Alternatively, antigen retrieval may be performed with citrate buffer pH 6.0

Positive Controls:

WB : HeLa cells, NIH/3T3 cells, HepG2 cells, mouse liver tissue, HT-1080 cells, mouse brain tissue, PC-12 cells, K-562 cells, C6 cells, rat brain tissue

IP : HeLa cells,

IHC : human malignant melanoma tissue, human cervical cancer tissue

IF/ICC : HepG2 cells,

Background Information

DDX3X, also named as DBX, DDX3 and HLP2, belongs to the DEAD box helicase family and DDX3/DED1 subfamily. It is ATP-dependent RNA helicase. DDX3X acts as a cofactor for XPO1-mediated nuclear export of incompletely spliced HIV-1 Rev RNAs. It is also involved in HIV-1 replication. DDX3X interacts specifically with hepatitis C virus core protein resulting in a change in intracellular location. 73 kDa is the target band. 60-65 kDa is some other isoform. This antibody can bind both DDX3X and DDX3Y for the close sequences.

Notable Publications

Author	Pubmed ID	Journal	Application
DANDAN FENG	34650637	Exp Ther Med	WB
Yifei Zhou	36242920	Biochem Biophys Res Commun	WB,IHC
Weiwei Cheng	31587919	Neuron	WB

Storage

Storage:

Store at -20°C. Stable for one year after shipment.

Storage Buffer:

PBS with 0.02% sodium azide and 50% glycerol pH 7.3.

Aliquoting is unnecessary for -20°C storage

For technical support and original validation data for this product please contact:

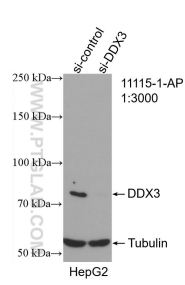
T: 4006900926

E: Proteintech-CN@ptglab.com

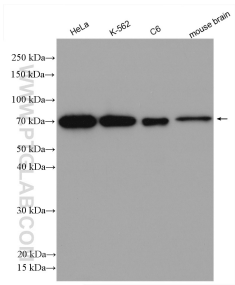
W: ptgcn.com

This product is exclusively available under Proteintech Group brand and is not available to purchase from any other manufacturer.

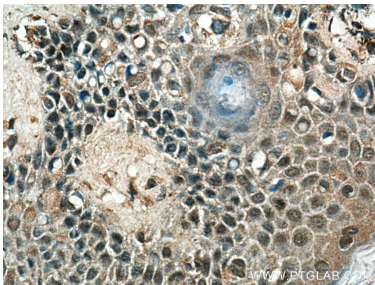
Selected Validation Data



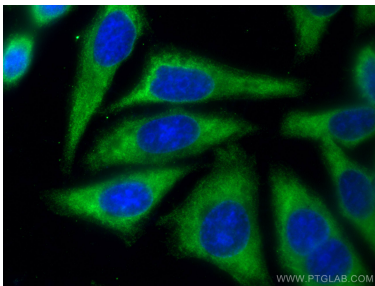
WB result of DDX3 antibody (11115-1-AP; 1:3000; incubated at room temperature for 1.5 hours) with sh-Control and sh-DDX3 transfected HepG2 cells.



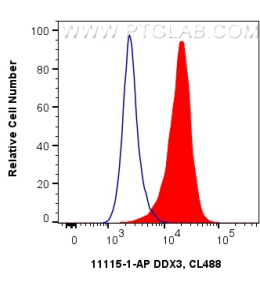
Various lysates were subjected to SDS PAGE followed by western blot with 11115-1-AP (DDX3 antibody) at dilution of 1:4000 incubated at room temperature for 1.5 hours.



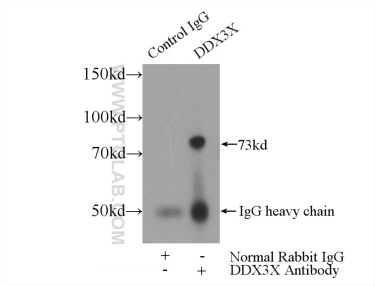
Immunohistochemical analysis of paraffin-embedded human malignant melanoma tissue slide using 11115-1-AP (DDX3 antibody) at dilution of 1:200 (under 40x lens)..



Immunofluorescent analysis of (-20°C Ethanol) fixed HepG2 cells using DDX3 antibody (11115-1-AP) at dilution of 1:400 and CoraLite®488-Conjugated AffiniPure Goat Anti-Rabbit IgG(H+L).



1X10⁶ HeLa cells were intracellularly stained with 0.4 ug Anti-Human DDX3 (11115-1-AP) and CoraLite®488-Conjugated AffiniPure Goat Anti-Rabbit IgG(H+L) at dilution 1:1000 (red), or 0.4 ug Rabbit IgG control Rabbit PolyAb (30000-O-AP, Clone:) (blue). Cells were fixed with 4% PFA and permeabilized with Flow Cytometry Perm Buffer (PF00011-C).



IP result of anti-DDX3 (IP:11115-1-AP, 4ug; Detection:11115-1-AP 1:300) with HeLa cells lysate 2480ug.