

For Research Use Only

# TAP1 Polyclonal antibody

Catalog Number: 11114-1-AP

Featured Product

33 Publications



## Basic Information

### Catalog Number:

11114-1-AP

### Source:

Rabbit

### Isotype:

IgG

### Immunogen Catalog Number:

AG1619

### GenBank Accession Number:

BC014081

### GeneID (NCBI):

6890

### UNIPROT ID:

Q03518

### Full Name:

transporter 1, ATP-binding cassette, sub-family B (MDR/TAP)

### Calculated MW:

81 kDa

### Observed MW:

70-81 kDa

### Purification Method:

Antigen affinity purification

### Recommended Dilutions:

WB: 1:1000-1:6000

IP: 0.5-4.0 ug for 1.0-3.0 mg of total protein lysate

IHC: 1:20-1:200

IF/ICC: 1:20-1:200

## Applications

### Tested Applications:

WB, IHC, IF/ICC, IP, ELISA

### Cited Applications:

WB, IHC, IF, IP, RIP

### Species Specificity:

human, mouse

### Cited Species:

human, mouse, rat

**Note-IHC: suggested antigen retrieval with TE buffer pH 9.0; (\*) Alternatively, antigen retrieval may be performed with citrate buffer pH 6.0**

### Positive Controls:

**WB**: HCT 116 cells, HepG2 cells, mouse skeletal muscle tissue, HeLa cells, mouse spleen tissue, SW480 cells

**IP**: HepG2 cells,

**IHC**: human pancreas cancer tissue,

**IF/ICC**: HepG2 cells,

## Background Information

TAP1, also known as ABCB2, PSF1 or RING4, is a member of the ATP-binding cassette (ABC) family of transmembrane transporters and is an essential component of the major histocompatibility complex (MHC) class I antigen-presenting pathway. TAP is involved in the transport of antigens from the cytoplasm to the endoplasmic reticulum for association with MHC class I molecules. It also acts as a molecular scaffold for the final stage of MHC class I folding. Defects in TAP1 are a cause of bare lymphocyte syndrome type 1 (BLS1). Western blot analysis using this antibody detected a major band around 70-80 kDa in HeLa cells.

## Notable Publications

Author	Pubmed ID	Journal	Application
Nima Attaran	36276482	Oncol Lett	IHC
Yan Li	36452477	Clin Transl Immunology	WB
Zhen-Da Wang	36419887	Front Oncol	WB,IHC

## Storage

### Storage:

Store at -20°C. Stable for one year after shipment.

### Storage Buffer:

PBS with 0.02% sodium azide and 50% glycerol, pH7.3

Aliquoting is unnecessary for -20°C storage

For technical support and original validation data for this product please contact:

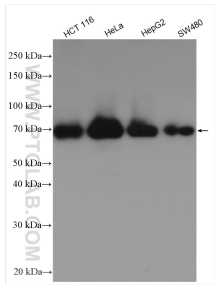
T: 4006900926

E: [Proteintech-CN@ptglab.com](mailto:Proteintech-CN@ptglab.com)

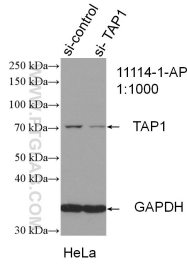
W: [ptgcn.com](http://ptgcn.com)

**This product is exclusively available under Proteintech Group brand and is not available to purchase from any other manufacturer.**

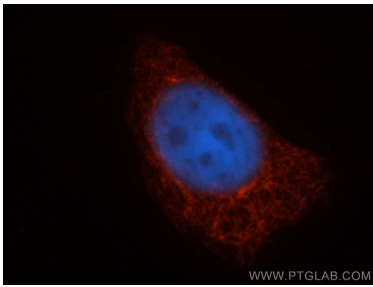
Selected Validation Data



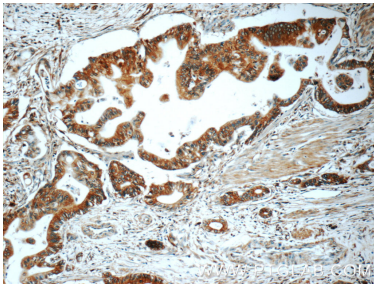
Various lysates were subjected to SDS PAGE followed by western blot with 11114-1-AP (TAP1 antibody) at dilution of 1:3000 incubated at room temperature for 1.5 hours.



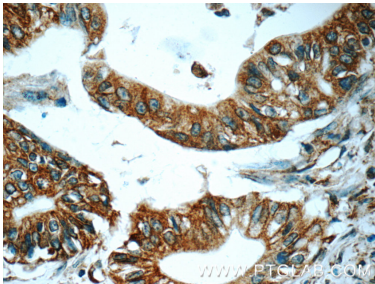
WB result of TAP1 antibody (11114-1-AP; 1:1000; incubated at room temperature for 1.5 hours) with sh-Control and sh-TAP1 transfected HeLa cells.



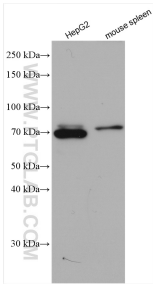
Immunofluorescent analysis of HepG2 cells, using TAP1 antibody 11114-1-AP at 1:50 dilution and Rhodamine-labeled goat anti-rabbit IgG (red). Blue pseudocolor = DAPI (fluorescent DNA dye).



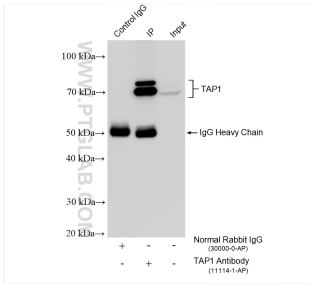
Immunohistochemical analysis of paraffin-embedded human pancreas cancer tissue slide using 11114-1-AP (TAP1 Antibody) at dilution of 1:50 (under 10x lens).



Immunohistochemical analysis of paraffin-embedded human pancreas cancer tissue slide using 11114-1-AP (TAP1 Antibody) at dilution of 1:50 (under 40x lens).



Various lysates were subjected to SDS PAGE followed by western blot with 11114-1-AP (TAP1 antibody) at dilution of 1:1500 incubated at room temperature for 1.5 hours.



IP result of anti-TAP1 (IP:11114-1-AP, 4ug; Detection:11114-1-AP 1:3000) with HepG2 cells lysate 1320 ug.