

For Research Use Only

EMAP II Polyclonal antibody, PBS Only

Catalog Number: 11091-1-PBS

Featured Product



Basic Information

Catalog Number:

11091-1-PBS

Concentration:

1 mg/ml

Source:

Rabbit

Isotype:

IgG

Immunogen Catalog Number:

AG1560

GenBank Accession Number:

BC014051

GeneID (NCBI):

9255

UNIPROT ID:

Q12904

Full Name:

small inducible cytokine subfamily E, member 1 (endothelial monocyte-activating)

Calculated MW:

34 kDa

Observed MW:

34 kDa and 68 kDa

Purification Method:

Antigen affinity purification

Applications

Tested Applications:

WB, IHC, IF/ICC, IP, Indirect ELISA

Species Specificity:

human, mouse

Background Information

SCYE1 (small inducible cytokine subfamily E, member 1) is also named as EMAP2, AIMP1. The human cDNA encodes a 312-amino acid polypeptide that the predicted 34-kDa precursor can be cleaved to produce an active 20-kDa product (PMID:7929199). SCYE1 is secreted as a result of various stimuli, including TNF- α , heat shock, and hypoxia, and that it acts as a multifunctional cytokine on both endothelial and immune cells (PMID:18292511). Defects in AIMP1 are the cause of leukodystrophy hypomyelinating type 3 (HLD3). It has 2 isoforms produced by alternative splicing and the protein can exist as a dimer (PMID:11306575).

Storage

Storage:

Store at -80°C.

The product is shipped with ice packs. Upon receipt, store it immediately at -80°C

Storage Buffer:

PBS only, pH7.3

For technical support and original validation data for this product please contact:

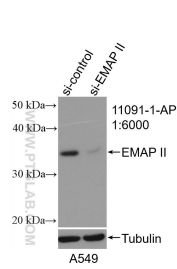
T: 4006900926

E: Proteintech-CN@ptglab.com

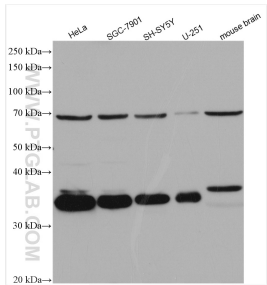
W: ptgcn.com

This product is exclusively available under Proteintech Group brand and is not available to purchase from any other manufacturer.

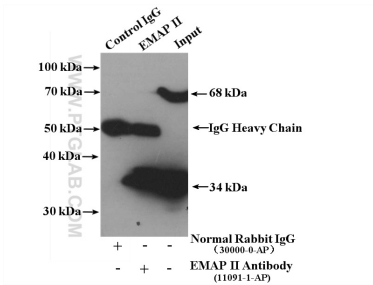
Selected Validation Data



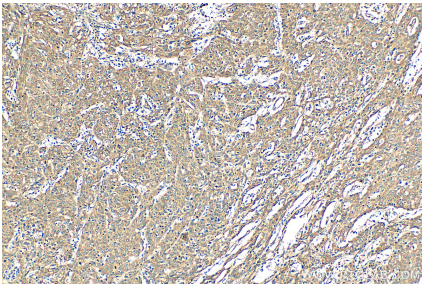
WB result of EMAP II antibody (11091-1-AP; 1:6000; incubated at room temperature for 1.5 hours) with sh-Control and sh-EMAP II transfected A549 cells. This data was developed using the same antibody clone with 11091-1-PBS in a different storage buffer formulation.



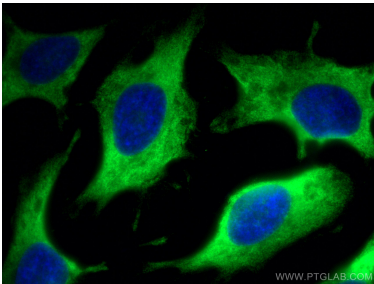
Various lysates were subjected to SDS PAGE followed by western blot with 11091-1-AP (EMAP II antibody) at dilution of 1:1000 incubated at room temperature for 1.5 hours. This data was developed using the same antibody clone with 11091-1-PBS in a different storage buffer formulation.



IP result of anti-EMAP II (IP: 11091-1-AP, 4ug; Detection: 11091-1-AP 1:500) with SGC-7901 cells lysate 2200 ug. This data was developed using the same antibody clone with 11091-1-PBS in a different storage buffer formulation.



Immunohistochemical analysis of paraffin-embedded human cervical cancer tissue slide using 11091-1-AP (EMAP II antibody) at dilution of 1:200 (under 10x lens). Heat mediated antigen retrieval with Tris-EDTA buffer (pH 9.0). This data was developed using the same antibody clone with 11091-1-PBS in a different storage buffer formulation.



Immunofluorescent analysis of (-20°C Methanol) fixed HeLa cells using EMAP II antibody (11091-1-AP) at dilution of 1:200 and CoraLite®488-Conjugated AffiniPure Goat Anti-Rabbit IgG(H+L). This data was developed using the same antibody clone with 11091-1-PBS in a different storage buffer formulation.