

For Research Use Only

NFE2 Polyclonal antibody

Catalog Number: 11089-1-AP

Featured Product

16 Publications



Basic Information

Catalog Number:

11089-1-AP

Concentration:

450 µg/ml

Source:

Rabbit

Isotype:

IgG

Immunogen Catalog Number:

AG1570

GenBank Accession Number:

BC005044

GeneID (NCBI):

4778

UNIPROT ID:

Q16621

Full Name:

nuclear factor (erythroid-derived 2),

45kDa

Calculated MW:

41 kDa

Observed MW:

45 kDa

Purification Method:

Antigen affinity purification

Recommended Dilutions:

WB 1:500-1:1000

IP 0.5-4.0 µg for 1.0-3.0 mg of total protein lysate

IHC 1:20-1:200

IF/ICC 1:20-1:200

Applications

Tested Applications:

WB, IHC, IF/ICC, IP, ELISA

Cited Applications:

WB, IHC, IF, CoIP

Species Specificity:

human

Cited Species:

human, mouse

Positive Controls:

WB : K-562 cells, U-937 cells

IP : K-562 cells,

IHC : human colon cancer tissue,

IF/ICC : HepG2 cells,

Note-IHC: suggested antigen retrieval with TE buffer pH 9.0; (*) Alternatively, antigen retrieval may be performed with citrate buffer pH 6.0

Background Information

The transcription factor p45 nuclear factor-erythroid-derived 2(NFE2) is one component of the NF-E2 complex that essential for regulating erythroid and megakaryocytic maturation and differentiation. It also plays crucial roles in erythroid and megakaryocytic lineages. NFE2 recognizes the TCAT/C sequence of the AP-1-like core palindrome present in a number of erythroid and megakaryocytic gene promoters, and acts as a activator. And it may has a role in all aspects of hemoglobin production from globin and heme synthesis to procurement of iron. This is a rabbit polyclonal antibody raised against full-length NFE2 of human origin.

Notable Publications

Author	Pubmed ID	Journal	Application
Jia Li	34715142	Life Sci	WB
Zhiyuan Lu	34739188	Adv Sci (Weinh)	WB
Carne Aman	35619054	BMC Genomics	WB

Storage

Storage:

Store at -20°C. Stable for one year after shipment.

Storage Buffer:

PBS with 0.02% sodium azide and 50% glycerol pH 7.3.

Aliquoting is unnecessary for -20°C storage

For technical support and original validation data for this product please contact:

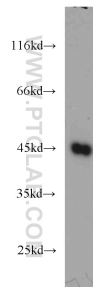
T: 4006900926

E: Proteintech-CN@ptglab.com

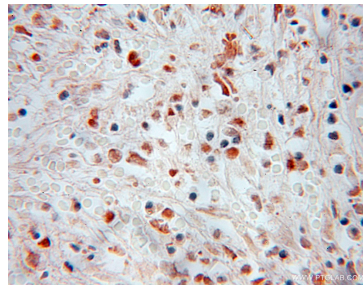
W: ptgcn.com

This product is exclusively available under Proteintech Group brand and is not available to purchase from any other manufacturer.

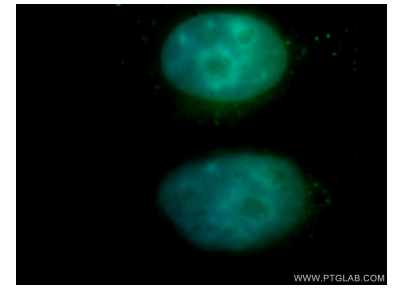
Selected Validation Data



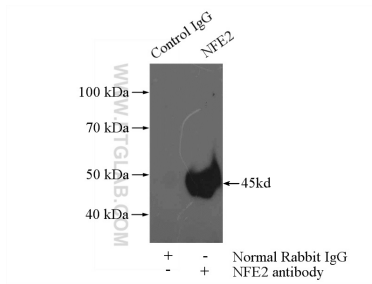
K-562 cells were subjected to SDS PAGE followed by western blot with 11089-1-AP (NFE2 antibody) at dilution of 1:500 incubated at room temperature for 1.5 hours.



Immunohistochemical analysis of paraffin-embedded human colon cancer using 11089-1-AP (NFE2 antibody) at dilution of 1:50 (under 10x lens).



Immunofluorescent analysis of HepG2 cells, using NFE2 antibody 11089-1-AP at 1:100 dilution and FITC-labeled donkey anti-rabbit IgG (green). Blue pseudocolor = DAPI (fluorescent DNA dye).



IP result of anti-NFE2 (IP:11089-1-AP, 4ug; Detection:11089-1-AP 1:500) with K-562 cells lysate 3440ug.