

For Research Use Only

UBE2A Polyclonal antibody

Catalog Number: 11080-1-AP **3 Publications**



Basic Information

Catalog Number: 11080-1-AP	GenBank Accession Number: BC010175	Purification Method: Antigen affinity purification
Size: 300 µg/ml	GeneID (NCBI): 7319	Recommended Dilutions: WB 1:500-1:1000 IHC 1:50-1:500
Source: Rabbit	UNIPROT ID: P49459	
Isotype: IgG	Full Name: ubiquitin-conjugating enzyme E2A (RAD6 homolog)	
Immunogen Catalog Number: AG1567	Calculated MW: 17 kDa	
	Observed MW: 17 kDa	

Applications

Tested Applications: IHC, WB, ELISA	Positive Controls: WB : HEK-293 cells, COLO 320 cells, human kidney tissue, human placenta tissue IHC : human nasopharyngeal carcinoma tissue,
Cited Applications: WB	
Species Specificity: human	
Cited Species: human, mouse, rat	

Note-IHC: suggested antigen retrieval with TE buffer pH 9.0; (*) Alternatively, antigen retrieval may be performed with citrate buffer pH 6.0

Background Information

UBE2A (Ubiquitin-conjugating enzyme E2 A) serves as the cognate E2-conjugating enzyme. It plays a critical role in regulating TP53 protein levels under both normal and stress conditions. UBE2A, UBE2B regulates TP53 levels in a "yin-yang" manner through a combination of two distinct mechanisms in mammalian cells (PMID:22083959). This protein has 3 isoforms produced by alternative splicing.

Notable Publications

Author	Pubmed ID	Journal	Application
Bin Li	33604685	Mol Med Rep	WB
Fabienne C Fiesel	24928900	J Cell Sci	WB
Maki Asami	36729835	Cell Rep	WB

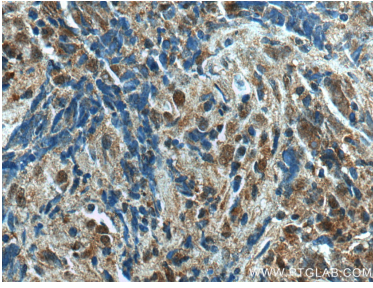
Storage

Storage:
Store at -20°C. Stable for one year after shipment.
Storage Buffer:
PBS with 0.02% sodium azide and 50% glycerol pH 7.3.
Aliquoting is unnecessary for -20°C storage

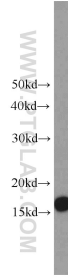
For technical support and original validation data for this product please contact:
T: 4006900926 E: Proteintech-CN@ptglab.com W: ptgcn.com

This product is exclusively available under Proteintech Group brand and is not available to purchase from any other manufacturer.

Selected Validation Data



Immunohistochemical analysis of paraffin-embedded human nasopharyngeal carcinoma tissue slide using 11080-1-AP (UBE2A antibody) at dilution of 1:200 (under 40x lens)..



HEK-293 cells were subjected to SDS PAGE followed by western blot with 11080-1-AP (UBE2A antibody) at dilution of 1:600 incubated at room temperature for 1.5 hours.