

## BORIS Polyclonal antibody

Catalog Number: 11074-2-AP

## Basic Information

<b>Catalog Number:</b> 11074-2-AP	<b>GenBank Accession Number:</b> BC130486	<b>Purification Method:</b> Antigen affinity purification
<b>Size:</b> 500 ug/ml	<b>GeneID (NCBI):</b> 140690	<b>Recommended Dilutions:</b> WB 1:500-1:2000
<b>Source:</b> Rabbit	<b>UNIPROT ID:</b> Q8NI51	<b>IHC 1:50-1:500</b> <b>IF/ICC 1:200-1:800</b>
<b>Isotype:</b> IgG	<b>Full Name:</b> CCCTC-binding factor (zinc finger protein)-like	
<b>Immunogen Catalog Number:</b> AG1547	<b>Calculated MW:</b> 82 kDa, 75 kDa	
	<b>Observed MW:</b> 75 kDa	

## Applications

**Tested Applications:**  
WB, IHC, IF/ICC, ELISA

**Species Specificity:**  
human, mouse, rat

**Note-IHC: suggested antigen retrieval with TE buffer pH 9.0; (\*) Alternatively, antigen retrieval may be performed with citrate buffer pH 6.0**

**Positive Controls:**

**WB:** PC-3 cells, mouse testis tissue, rat testis tissue

**IHC:** human cervical cancer tissue,

**IF/ICC:** HeLa cells,

## Background Information

CTCF, also named BORIS (for brother of the regulator of imprinted sites) is a paralogue of the 11 zinc-finger transcription factor, CTCF. It is predominantly expressed in spermatocytes in the testis, also can be found in tumors and cancer cell lines. It mainly participates in insulator function, nuclear architecture and transcriptional control, which probably acts by recruiting epigenetic chromatin modifiers. It has a key role in gene imprinting in male germline, by participating in the establishment of differential methylation at the IGF2/H19 imprinted control region (ICR). Directly binds the unmethylated H19 ICR and recruits the PRMT7 methyltransferase, leading to methylate histone H4 'Arg-3' to form H4R3me2. Present polyclonal anti-CTCF antibody (11074-2-AP) is produced by immunizing animals with part of C-terminal chain of CTCFL and detect a 75-kDa band and a 55-kDa band.

## Storage

**Storage:**

Store at -20°C. Stable for one year after shipment.

**Storage Buffer:**

PBS with 0.02% sodium azide and 50% glycerol pH 7.3.

**Aliquoting is unnecessary for -20°C storage**

For technical support and original validation data for this product please contact:

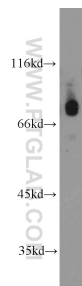
T: 4006900926

E: [Proteintech-CN@ptglab.com](mailto:Proteintech-CN@ptglab.com)

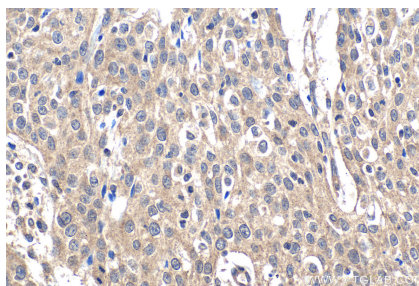
W: [ptgcn.com](http://ptgcn.com)

**This product is exclusively available under Proteintech Group brand and is not available to purchase from any other manufacturer.**

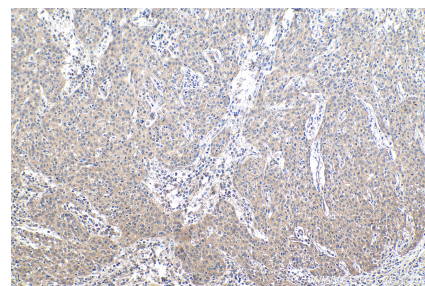
## Selected Validation Data



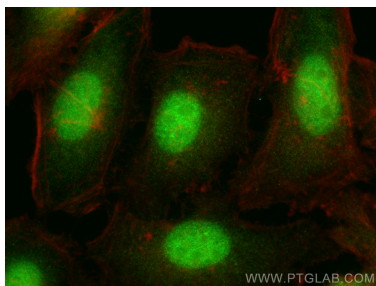
PC-3 cells were subjected to SDS PAGE followed by western blot with 11074-2-AP (BORIS antibody) at dilution of 1:1000 incubated at room temperature for 1.5 hours.



Immunohistochemical analysis of paraffin-embedded human cervical cancer tissue slide using 11074-2-AP (BORIS antibody) at dilution of 1:200 (under 40x lens). Heat mediated antigen retrieval with Tris-EDTA buffer (pH 9.0).



Immunohistochemical analysis of paraffin-embedded human cervical cancer tissue slide using 11074-2-AP (BORIS antibody) at dilution of 1:200 (under 10x lens). Heat mediated antigen retrieval with Tris-EDTA buffer (pH 9.0).



Immunofluorescent analysis of (4% PFA) fixed HeLa cells using BORIS antibody (11074-2-AP) at dilution of 1:400 and CoraLite®488-Conjugated Goat Anti-Rabbit IgG(H+L) (SA00013-2), CL594-Phalloidin (red).