

GIMAP5 Polyclonal antibody

Catalog Number: 11068-1-AP

2 Publications

Basic Information

Catalog Number: 11068-1-AP	GenBank Accession Number: BC011732	Purification Method: Antigen affinity purification
Size: 500 µg/ml	GeneID (NCBI): 55340	Recommended Dilutions: WB 1:500-1:2000 IHC 1:20-1:200
Source: Rabbit	UNIPROT ID: Q96F15	
Isotype: IgG	Full Name: GTPase, IMAP family member 5	
Immunogen Catalog Number: AG1509	Calculated MW: 35 kDa	
	Observed MW: 30-35 kDa	

Applications

Tested Applications: IHC, WB, ELISA	Positive Controls:
Cited Applications: WB	WB: Jurkat cells,
Species Specificity: human	IHC: human lymphoma tissue,
Cited Species: human	
Note-IHC: suggested antigen retrieval with TE buffer pH 9.0; (*) Alternatively, antigen retrieval may be performed with citrate buffer pH 6.0	

Background Information

GIMAP5 gene encodes immunity-associated nucleotide 5 protein (IAN5) belonging to GTPase immune-associated protein subfamily. GIMAP5 is widely expressed with high levels in lymph node and spleen. The loss of Gimap5 (GTPase of the 5) gene function is the underlying cause of lymphopenia and autoimmune diabetes in the BioBreeding (BB) rat. Mouse gimap5 is necessary for the survival of peripheral T cells, NK/NKT-cell development, hematopoietic progenitor cell survival and the maintenance of normal liver function. GIMAP5 may regulate T lymphocyte survival by mechanisms that operate upstream of mitochondria.

Notable Publications

Author	Pubmed ID	Journal	Application
Chadwick Nicholas N	19508709	Mol Cancer	WB
Chadwick Nicholas N	20817506	Blood Cells Mol Dis	WB

Storage

Storage:
Store at -20°C. Stable for one year after shipment.

Storage Buffer:
PBS with 0.02% sodium azide and 50% glycerol pH 7.3.

Aliquoting is unnecessary for -20°C storage

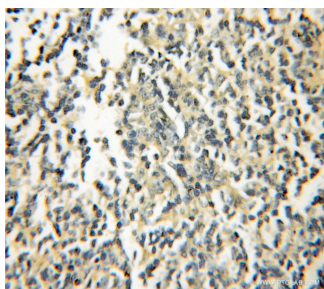
For technical support and original validation data for this product please contact:

T: 4006900926

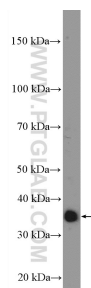
E: Proteintech-CN@ptglab.comW: ptgcn.com

This product is exclusively available under Proteintech Group brand and is not available to purchase from any other manufacturer.

Selected Validation Data



Immunohistochemical analysis of paraffin-embedded human lymphoma using 11068-1-AP (GIMAP5 antibody) at dilution of 1:50 (under 10x lens).



Jurkat cells were subjected to SDS PAGE followed by western blot with 11068-1-AP (GIMAP5 Antibody) at dilution of 1:1000 incubated at room temperature for 1.5 hours.