

For Research Use Only

WBP1 Polyclonal antibody

Catalog Number: 11042-1-AP

Featured Product

1 Publications



Basic Information

Catalog Number:

11042-1-AP

Size:

800 µg/ml

Source:

Rabbit

Isotype:

IgG

Immunogen Catalog Number:

AG1478

GenBank Accession Number:

BC010012

GeneID (NCBI):

23559

UNIPROT ID:

Q96G27

Full Name:

WW domain binding protein 1

Calculated MW:

32 kDa

Observed MW:

32 kDa

Purification Method:

Antigen affinity purification

Recommended Dilutions:

WB 1:500-1:3000

IHC 1:50-1:500

Applications

Tested Applications:

IHC, WB, ELISA

Cited Applications:

WB

Species Specificity:

human, mouse

Cited Species:

mouse

Note-IHC: suggested antigen retrieval with TE buffer pH 9.0; (*) Alternatively, antigen retrieval may be performed with citrate buffer pH 6.0

Positive Controls:

WB : mouse brain tissue,

IHC : human pancreas cancer tissue,

Background Information

WBP1 was originally identified in vitro as a protein that bound to the WW domain of Yes kinase-associated protein. The silencing of WBP1 with small hairpin RNAs caused partial, but significant suppression of ATF6-induced apoptosis. It is a type I transmembrane protein.

Notable Publications

Author	Pubmed ID	Journal	Application
Morishima Nobuhiro N	21841196	J Biol Chem	WB

Storage

Storage:

Store at -20°C. Stable for one year after shipment.

Storage Buffer:

PBS with 0.02% sodium azide and 50% glycerol pH 7.3.

Aliquoting is unnecessary for -20°C storage

For technical support and original validation data for this product please contact:

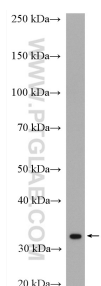
T: 4006900926

E: Proteintech-CN@ptglab.com

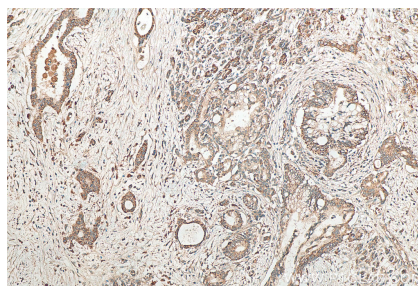
W: ptgcn.com

This product is exclusively available under Proteintech Group brand and is not available to purchase from any other manufacturer.

Selected Validation Data



mouse brain tissue were subjected to SDS PAGE followed by western blot with 11042-1-AP (WBP1 antibody) at dilution of 1:1500 incubated at room temperature for 1.5 hours.



Immunohistochemical analysis of paraffin-embedded human pancreas cancer tissue slide using 11042-1-AP (WBP1 antibody) at dilution of 1:200 (under 10x lens). Heat mediated antigen retrieval with Tris-EDTA buffer (pH 9.0).