

For Research Use Only

TSNAX Polyclonal antibody

Catalog Number: 11040-1-AP



Basic Information

Catalog Number:

11040-1-AP

Concentration:

450 ug/ml

Source:

Rabbit

Isotype:

IgG

Immunogen Catalog Number:

AG1507

GenBank Accession Number:

BC011797

GeneID (NCBI):

7257

UNIPROT ID:

Q99598

Full Name:

translin-associated factor X

Calculated MW:

33 kDa

Observed MW:

33 kDa

Purification Method:

Antigen affinity purification

Recommended Dilutions:

WB 1:1000-1:5000

IP 0.5-4.0 ug for 1.0-3.0 mg of total protein lysate

IHC 1:20-1:200

IF/ICC 1:20-1:200

Applications

Tested Applications:

WB, IHC, IF/ICC, IP, ELISA

Species Specificity:

human, mouse, rat

Note-IHC: suggested antigen retrieval with TE buffer pH 9.0; (*) Alternatively, antigen retrieval may be performed with citrate buffer pH 6.0

Positive Controls:

WB : HeLa cells,

IP : HeLa cells,

IHC : human gliomas tissue,

IF/ICC : MCF-7 cells,

Background Information

Storage

Storage:

Store at -20°C. Stable for one year after shipment.

Storage Buffer:

PBS with 0.02% sodium azide and 50% glycerol pH 7.3.

Aliquoting is unnecessary for -20°C storage

For technical support and original validation data for this product please contact:

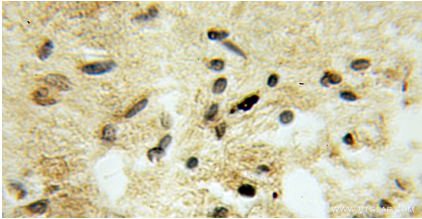
T: 4006900926

E: Proteintech-CN@ptglab.com

W: ptgcn.com

This product is exclusively available under Proteintech Group brand and is not available to purchase from any other manufacturer.

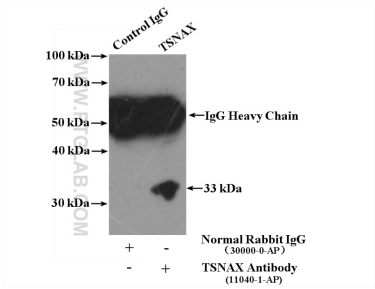
Selected Validation Data



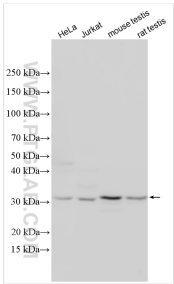
Immunohistochemical analysis of paraffin-embedded human gliomas using 11040-1-AP (TSNAX antibody) at dilution of 1:50 (under 10x lens).



Immunofluorescent analysis of MCF-7 cells, using TSNAX antibody 11040-1-AP at 1:50 dilution and FITC-labeled donkey anti-rabbit IgG (green). Blue pseudocolor = DAPI (fluorescent DNA dye).



IP result of anti-TSNAX (IP:11040-1-AP, 4ug; Detection:11040-1-AP 1:300) with HeLa cells lysate 2400ug.



Various lysates were subjected to SDS PAGE followed by western blot with 11040-1-AP (TSNAX antibody) at dilution of 1:2500 incubated at room temperature for 1.5 hours.