

For Research Use Only

PLOD3 Polyclonal antibody

Catalog Number: 11027-1-AP

Featured Product

34 Publications



Basic Information

Catalog Number:

11027-1-AP

Size:

350 ug/ml

Source:

Rabbit

Isotype:

IgG

Immunogen Catalog Number:

AG1480

GenBank Accession Number:

BC011674

GeneID (NCBI):

8985

UNIPROT ID:

O60568

Full Name:

procollagen-lysine, 2-oxoglutarate 5-dioxygenase 3

Calculated MW:

738 aa, 85 kDa

Observed MW:

80-85 kDa

Purification Method:

Antigen affinity purification

Recommended Dilutions:

WB 1:2000-1:16000

IP 0.5-4.0 ug for 1.0-3.0 mg of total protein lysate

IHC 1:100-1:400

IF/ICC 1:50-1:500

Applications

Tested Applications:

WB, IHC, IF/ICC, IP, ELISA

Cited Applications:

WB, IHC, IF, IP

Species Specificity:

human, mouse, rat

Cited Species:

human, mouse, rat, drosophila

Note-IHC: suggested antigen retrieval with TE buffer pH 9.0; (*) Alternatively, antigen retrieval may be performed with citrate buffer pH 6.0

Positive Controls:

WB : A549 cells, PC-3 cells, HepG2 cells, HeLa cells, human placenta tissue, mouse placenta tissue

IP : HepG2 cells,

IHC : human pancreas cancer tissue, human pancreas tissue

IF/ICC : HepG2 cells,

Background Information

PLOD3, also named as LH3, forms hydroxylysine residues in -Xaa-Lys-Gly- sequences in collagens. These hydroxylysines serve as sites of attachment for carbohydrate units and are essential for the stability of the intermolecular collagen cross-links. The major function of PLOD3 in osteoblasts is to glucosylate galactosylhydroxylysine residues in type I collagen.

Notable Publications

Author	Pubmed ID	Journal	Application
Randy T Cowling	28923350	J Mol Cell Cardiol	WB
Stephen A Watt	26380979	PLoS One	IF
Siming Gong	34576068	Int J Mol Sci	IHC

Storage

Storage:

Store at -20°C. Stable for one year after shipment.

Storage Buffer:

PBS with 0.02% sodium azide and 50% glycerol pH 7.3.

Aliquoting is unnecessary for -20°C storage

For technical support and original validation data for this product please contact:

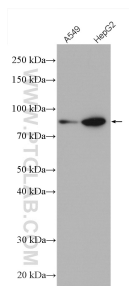
T: 4006900926

E: Proteintech-CN@ptglab.com

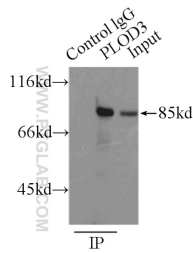
W: ptgcn.com

This product is exclusively available under Proteintech Group brand and is not available to purchase from any other manufacturer.

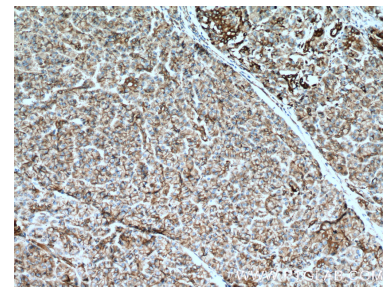
Selected Validation Data



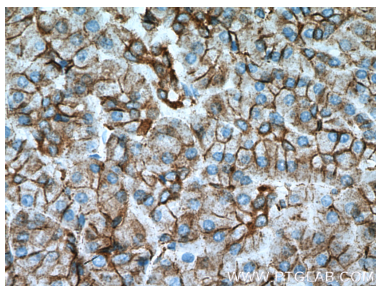
Various lysates were subjected to SDS PAGE followed by western blot with 11027-1-AP (PLOD3 antibody) at dilution of 1:2000 incubated at room temperature for 1.5 hours.



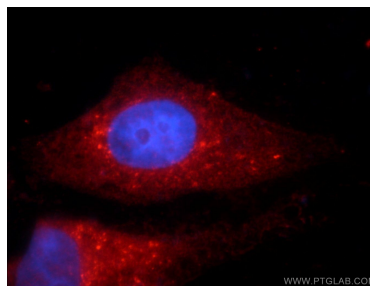
IP result of anti-PLOD3 (IP:11027-1-AP, 3ug; Detection:11027-1-AP 1:500) with HepG2 cells lysate 6000ug.



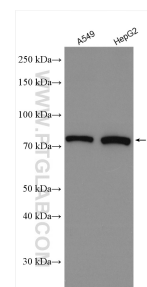
Immunohistochemical analysis of paraffin-embedded human pancreas cancer tissue slide using 11027-1-AP (PLOD3 Antibody) at dilution of 1:200 (under 10x lens). Heat mediated antigen retrieval with Tris-EDTA buffer (pH 9.0).



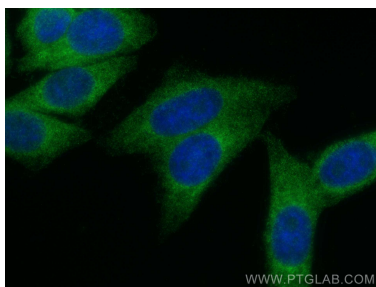
Immunohistochemical analysis of paraffin-embedded human pancreas cancer tissue slide using 11027-1-AP (PLOD3 Antibody) at dilution of 1:200 (under 40x lens). Heat mediated antigen retrieval with Tris-EDTA buffer (pH 9.0).



Immunofluorescent analysis of HepG2 cells using 11027-1-AP (PLOD3 antibody) at dilution of 1:25 and Rhodamine-Goat anti-Rabbit IgG.



Various lysates were subjected to SDS PAGE followed by western blot with 11027-1-AP (PLOD3 antibody) at dilution of 1:8000 incubated at room temperature for 1.5 hours.



Immunofluorescent analysis of (4% PFA) fixed HepG2 cells using PLOD3 antibody (11027-1-AP) at dilution of 1:200 and CoraLite®488-Conjugated AffiniPure Goat Anti-Rabbit IgG(H+L).