

For Research Use Only

# WBS15/LAT2 Polyclonal antibody

Catalog Number: 11008-1-AP



## Basic Information

Catalog Number:

11008-1-AP

Size:

750 µg/ml

Source:

Rabbit

Isotype:

IgG

Immunogen Catalog Number:

AG1454

GenBank Accession Number:

BC009204

GeneID (NCBI):

7462

UNIPROT ID:

Q9GZY6

Full Name:

linker for activation of T cells family,  
member 2

Calculated MW:

27 kDa

Observed MW:

27-30 kDa

Purification Method:

Antigen affinity purification

Recommended Dilutions:

WB 1:1000-1:4000

## Applications

Tested Applications:

WB, ELISA

Species Specificity:

human, mouse

Positive Controls:

WB: Raji cells, human placenta tissue, human brain  
tissue

## Background Information

WBS15, also named as LAB, NTAL, WBSCR15, WBSCR5 and LAT2 (Linker for activation of T-cells family member 2; not SLC7A8/LAT2), is involved in FCER1 (high affinity immunoglobulin epsilon receptor)-mediated signaling in mast and myeloid cells. WBS15 is involved in BCR (B-cell antigen receptor)-mediated signaling in B-cells. It is located in the Williams-Beuren syndrome (WBS) critical region. WBS15 has two isoforms with MW 27-30 kDa and 12 kDa.

## Storage

Storage:

Store at -20°C. Stable for one year after shipment.

Storage Buffer:

PBS with 0.02% sodium azide and 50% glycerol pH 7.3.

Aliquoting is unnecessary for -20°C storage

For technical support and original validation data for this product please contact:

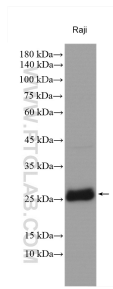
T: 4006900926

E: [Proteintech-CN@ptglab.com](mailto:Proteintech-CN@ptglab.com)

W: [ptgcn.com](http://ptgcn.com)

This product is exclusively available under Proteintech Group brand and is not available to purchase from any other manufacturer.

## Selected Validation Data



Raji lysates were subjected to SDS PAGE followed by western blot with 11008-1-AP (WBS15/LAT2 antibody) at dilution of 1:2000 incubated at room temperature for 1.5 hours.