

PPAN Polyclonal antibody

Catalog Number: 11006-1-AP

Featured Product

7 Publications

Basic Information

Catalog Number:

11006-1-AP

Size:

650 µg/ml

Source:

Rabbit

Isotype:

IgG

Immunogen Catalog Number:

AG1419

GenBank Accession Number:

BC009833

GeneID (NCBI):

56342

UNIPROT ID:

Q9NQ55

Full Name:

peter pan homolog (Drosophila)

Calculated MW:

53 kDa

Observed MW:

55-58 kDa

Purification Method:

Antigen affinity purification

Recommended Dilutions:

WB 1:1000-1:4000

IHC 1:500-1:2000

Applications

Tested Applications:

IHC, WB, ELISA

Cited Applications:

WB, IP, IF, IHC

Species Specificity:

human, mouse, rat

Cited Species:

human, mouse, xenopus

Note-IHC: suggested antigen retrieval with TE buffer pH 9.0; (*) Alternatively, antigen retrieval may be performed with citrate buffer pH 6.0

Positive Controls:

WB : HeLa cells, mouse heart tissue, rat heart tissue, rat liver tissue

IHC : human colon tissue,

Background Information

PPAN (or SSF, SSF1 or SSF2) gene is widely expressed, and encodes peter pan homolog protein which may be localized in nucleus. Two isoforms are produced through alternative splicing. So far the characterization of this protein is largely unknown, multiple phosphorylation sites has been revealed based on high-throughput phosphorylation analysis. This antibody is raised against the C-terminal of human PPAN and recognize bands around 55 kDa.

Notable Publications

Author	Pubmed ID	Journal	Application
Tecza Aleksandra A	21770895	Biol Cell	WB,IHC
Astrid S Pfister	25759387	J Biol Chem	WB, IF
Bugner Verena V	21558383	Development	WB,IF,IP

Storage

Storage:

Store at -20°C. Stable for one year after shipment.

Storage Buffer:

PBS with 0.02% sodium azide and 50% glycerol pH 7.3.

Aliquoting is unnecessary for -20°C storage

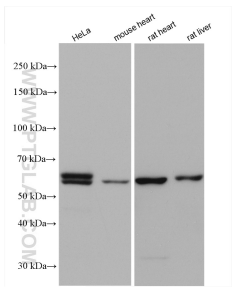
For technical support and original validation data for this product please contact:

T: 4006900926

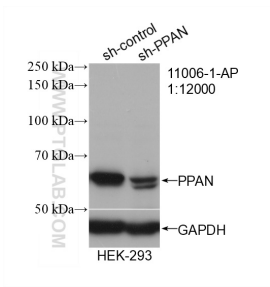
E: Proteintech-CN@ptglab.comW: ptgcn.com

This product is exclusively available under Proteintech Group brand and is not available to purchase from any other manufacturer.

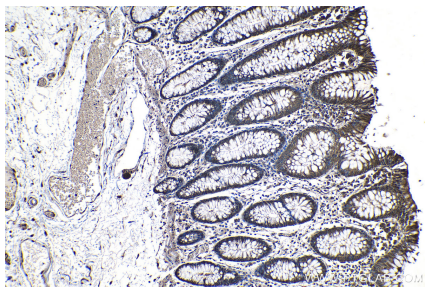
Selected Validation Data



Various lysates were subjected to SDS PAGE followed by western blot with 11006-1-AP (PPAN antibody) at dilution of 1:2000 incubated at room temperature for 1.5 hours.



WB result of PPAN antibody (11006-1-AP; 1:12000; incubated at room temperature for 1.5 hours) with sh-Control and sh-PPAN transfected HEK-293 cells.



Immunohistochemical analysis of paraffin-embedded human colon tissue slide using 11006-1-AP (PPAN antibody) at dilution of 1:1000 (under 10x lens). Heat mediated antigen retrieval with Tris-EDTA buffer (pH 9.0).