

For Research Use Only

LDB3 Polyclonal antibody

Catalog Number: 11004-1-AP **3 Publications**



Basic Information

Catalog Number: 11004-1-AP	GenBank Accession Number: BC010929	Purification Method: Antigen affinity purification
Size: 500 µg/ml	GeneID (NCBI): 11155	Recommended Dilutions: WB 1:1000-1:5000 IHC 1:50-1:500
Source: Rabbit	UNIPROT ID: O75112	
Isotype: IgG	Full Name: LIM domain binding 3	
Immunogen Catalog Number: AG1417	Calculated MW: 32/78 kDa	
	Observed MW: 32 kDa, 78-80 kDa	

Applications

Tested Applications: IHC, WB, ELISA	Positive Controls: WB : mouse skeletal muscle tissue, human skeletal muscle tissue, rat heart tissue IHC : mouse heart tissue,
Cited Applications: WB, IHC	
Species Specificity: human, mouse, rat	
Cited Species: human, mouse	
Note-IHC: suggested antigen retrieval with TE buffer pH 9.0; (*) Alternatively, antigen retrieval may be performed with citrate buffer pH 6.0	

Background Information

Notable Publications

Author	Pubmed ID	Journal	Application
Shinji Kohsaka	36333410	NPJ Precis Oncol	IHC
Marshall W Hogarth	26681802	Hum Mol Genet	WB
Garton F F	24234654	Hum Mol Genet	WB

Storage

Storage:
Store at -20°C. Stable for one year after shipment.
Storage Buffer:
PBS with 0.02% sodium azide and 50% glycerol pH 7.3.
Aliquoting is unnecessary for -20°C storage

For technical support and original validation data for this product please contact:

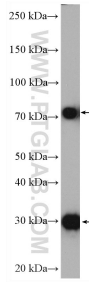
T: 4006900926

E: Proteintech-CN@ptglab.com

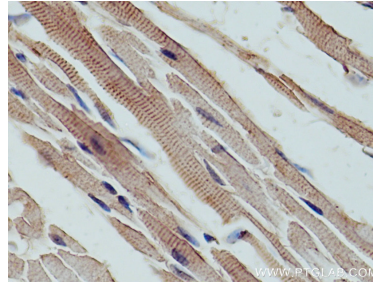
W: ptgcn.com

This product is exclusively available under Proteintech Group brand and is not available to purchase from any other manufacturer.

Selected Validation Data



mouse skeletal muscle tissue were subjected to SDS PAGE followed by western blot with 11004-1-AP (LDB3 antibody) at dilution of 1:3000 incubated at room temperature for 1.5 hours.



Immunohistochemical analysis of paraffin-embedded mouse heart tissue slide using 11004-1-AP (LDB3 antibody) at dilution of 1:200 (under 40x lens). Heat mediated antigen retrieval with Tris-EDTA buffer (pH 9.0).