

For Research Use Only

PANK2 Polyclonal antibody, PBS Only

Catalog Number: 11001-1-PBS



Basic Information

Catalog Number:

11001-1-PBS

Size:

1 mg/ml

Source:

Rabbit

Isotype:

IgG

Immunogen Catalog Number:

AG1413

GenBank Accession Number:

BC009421

GeneID (NCBI):

80025

UNIPROT ID:

Q9BZ23

Full Name:

pantothenate kinase 2

Calculated MW:

63 kDa

Observed MW:

63-70 kDa

Purification Method:

Antigen affinity purification

Applications

Tested Applications:

WB, IHC, IF/ICC, IP, Indirect ELISA

Species Specificity:

human, mouse, rat

Background Information

Pantothenate kinase 2 (PANK2) is an essential regulatory enzyme in coenzyme A biosynthesis. PANK2 mutations cause pantothenate kinase-associated neurodegeneration (PKAN), which leads to pigmentary retinopathy, progressive dystonia and other abnormalities (PMID:20603201). Pank2 protein is localized to mitochondria of neurons in human brain, distinguishing it from other pantothenate kinases that do not possess mitochondrial-targeting sequences (PMID:15659606). It has 4 isoforms produced by alternative splicing and alternative initiation.

Storage

Storage:

Store at -80°C.

The product is shipped with ice packs. Upon receipt, store it immediately at -80°C

Storage Buffer:

PBS Only

For technical support and original validation data for this product please contact:

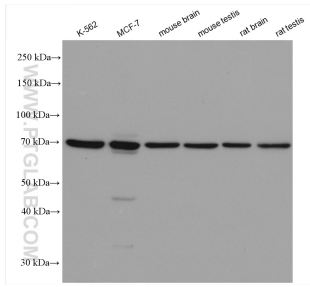
T: 4006900926

E: Proteintech-CN@ptglab.com

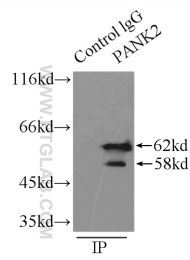
W: ptgcn.com

This product is exclusively available under Proteintech Group brand and is not available to purchase from any other manufacturer.

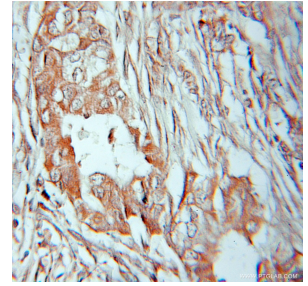
Selected Validation Data



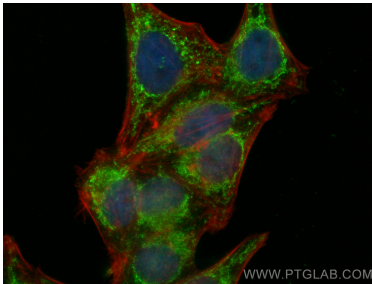
Various lysates were subjected to SDS PAGE followed by western blot with 11001-1-AP (PANK2 antibody) at dilution of 1:2000 incubated at room temperature for 1.5 hours. This data was developed using the same antibody clone with 11001-1-PBS in a different storage buffer formulation.



IP result of anti-PANK2 (IP: 11001-1-AP, 3ug; Detection: 11001-1-AP 1:800) with mouse brain tissue lysate 9500ug. This data was developed using the same antibody clone with 11001-1-PBS in a different storage buffer formulation.



Immunohistochemical analysis of paraffin-embedded human lung cancer using 11001-1-AP (PANK2 antibody) at dilution of 1:10 (under 10x lens). This data was developed using the same antibody clone with 11001-1-PBS in a different storage buffer formulation.



Immunofluorescent analysis of (4% PFA) fixed HepG2 cells using PANK2 antibody (11001-1-AP) at dilution of 1:200 and Multi-rAb Coralite® Plus 488-Goat Anti-Rabbit Recombinant Secondary Antibody (H+L) (RGAR002), CL594-phalloidin (red). This data was developed using the same antibody clone with 11001-1-PBS in a different storage buffer formulation.