

For Research Use Only

PANK2 Polyclonal antibody

Catalog Number: 11001-1-AP



Basic Information

Catalog Number:

11001-1-AP

Size:

650 ug/ml

Source:

Rabbit

Isotype:

IgG

Immunogen Catalog Number:

AG1413

GenBank Accession Number:

BC009421

GeneID (NCBI):

80025

UNIPROT ID:

Q9BZ23

Full Name:

pantothenate kinase 2

Calculated MW:

63 kDa

Observed MW:

63-70 kDa

Purification Method:

Antigen affinity purification

Recommended Dilutions:

WB 1:1000-1:4000

IP 0.5-4.0 ug for 1.0-3.0 mg of total protein lysate

IHC 1:10-1:100

IF/ICC 1:50-1:500

Applications

Tested Applications:

WB, IHC, IF/ICC, IP, ELISA

Species Specificity:

human, mouse, rat

Note-IHC: suggested antigen retrieval with TE buffer pH 9.0; (*) Alternatively, antigen retrieval may be performed with citrate buffer pH 6.0

Positive Controls:

WB : K-562 cells, human brain tissue, MCF-7 cells, mouse brain tissue, mouse testis tissue, rat brain tissue, rat testis tissue

IP : mouse brain tissue,

IHC : human lung cancer tissue, human liver tissue

IF/ICC : HepG2 cells,

Background Information

Pantothenate kinase 2 (PANK2) is an essential regulatory enzyme in coenzyme A biosynthesis. PANK2 mutations cause pantothenate kinase-associated neurodegeneration (PKAN), which leads to pigmentary retinopathy, progressive dystonia and other abnormalities (PMID:20603201). Pank2 protein is localized to mitochondria of neurons in human brain, distinguishing it from other pantothenate kinases that do not possess mitochondrial-targeting sequences (PMID:15659606). It has 4 isoforms produced by alternative splicing and alternative initiation.

Storage

Storage:

Store at -20°C. Stable for one year after shipment.

Storage Buffer:

PBS with 0.02% sodium azide and 50% glycerol pH 7.3.

Aliquoting is unnecessary for -20°C storage

For technical support and original validation data for this product please contact:

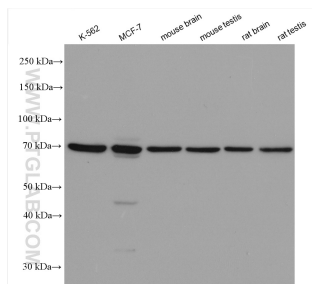
T: 4006900926

E: Proteintech-CN@ptglab.com

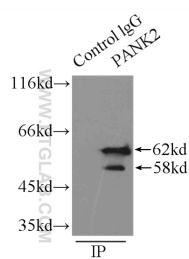
W: ptgcn.com

This product is exclusively available under Proteintech Group brand and is not available to purchase from any other manufacturer.

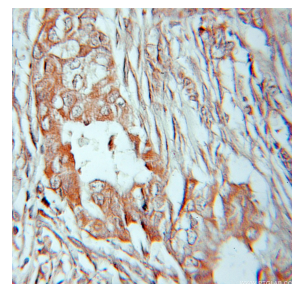
Selected Validation Data



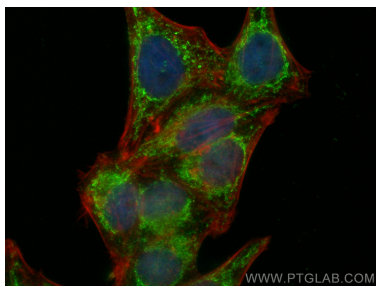
Various lysates were subjected to SDS PAGE followed by western blot with 11001-1-AP (PANK2 antibody) at dilution of 1:2000 incubated at room temperature for 1.5 hours.



IP result of anti-PANK2 (IP:11001-1-AP, 3ug; Detection:11001-1-AP 1:800) with mouse brain tissue lysate 9500ug.



Immunohistochemical analysis of paraffin-embedded human lung cancer using 11001-1-AP (PANK2 antibody) at dilution of 1:10 (under 10x lens).



Immunofluorescent analysis of (4% PFA) fixed HepG2 cells using PANK2 antibody (11001-1-AP) at dilution of 1:200 and Multi-rAb Coralite® Plus 488-Goat Anti-Rabbit Recombinant Secondary Antibody (H+L) (RGAR002), CL594-phalloidin (red).